

## COLONIAL CLUB

By C. E. NOTTINGHAM  
*Manager*



COLONIAL CLUB, Fort Worth, Texas, welcomes the opportunity of entertaining the 45th U. S. G. A. Open Championship Tournament. Colonial is perhaps the youngest club ever selected for the "Blue Ribbon" event in the golfing world.

The Club was constructed during 1935, opened for play first on January 29, 1936. It is located along the Clear Fork of the Trinity River adjoining Forest Park, Fort Worth's finest park. While not the longest in yardage as has been used for the Open Championship, Colonial will, it is believed prove to be far from the easiest. Under the supervision of Mr. Dean Woods, well known golf course engineer, with Mr. Perry Maxwell as Associate Architect, with whom Mr. Woods was associated for many years prior to his coming to Colonial, the course has been placed in what is considered perfect condition for the Open.

Three new holes have been constructed, others have been lengthened through the rebuilding of both tees and greens. This has been done, not for the purpose of making the course more difficult, but to make for better shots for the long hitters and at the same time not make it harder for the shorter hitters. Colonial offers every scoring opportunity, its fine bermuda fairways, many of which are lined on both sides with large Pecan, Elm, Oak and other trees rewarding, in fact, requiring accurate iron shots. Driving will not prove difficult and should present no special problem to the one who can hit his shots down the middle, except on the longer holes where a little added length will give the player an advantage.

The greens, with few exceptions, are closely bunkered and are testing targets, many putting opportunities will be offered on the finest bent grass surfaces that are true and fair. Colonial pioneered in bringing bent grass to this section of our country.

It is with pride and pleasure that Colonial Club, on behalf of its members extends its warmest welcome to the Forty-fifth Open Championship Tournament of the United States Golf Association.



MORTON G. [unclear]  
*Vice-Presid*



W. F. NICHOL



FIELDING W. [unclear]



EDWARD L. [unclear]



FRANCIS D. [unclear]

*The Course  
in Leonard  
Built*

The story goes that the president of Rivercrest grew weary of Leonard's harping about bent grass greens and finally told him, "Marvin, if you're so sold on bent grass, why don't you go build your own golf course and put them in?"

"Thank you very much," replied Leonard. "I may just do that."

That night he vowed to build a championship course. The year was 1934. The nation was captivated by the antics of Dizzy Dean and the St. Louis "Gashouse Gang" but Marvin Leonard had little time to think about the Cardinals. The only birdies he was thinking about were putts to be sunk on bent grass greens.

Leonard had his eye on a piece of property in southwest Fort Worth near Forest Park and the Texas Christian University campus. He acquired the land, roughly 157 acres, in late 1934 and at once went to work on building his golf course. Leonard engaged the services of noted golf architects John Bredemus of Texas and Perry Maxwell of Oklahoma to assist with the layout. Bredemus had been involved with courses in Houston and Galveston while Maxwell was finishing up work on the heralded new Southern Hills course in Tulsa.

Leonard asked Bredemus and Maxwell each to submit five alternative plans for the course. He reviewed their recommendations then asked for five more. Marvin Leonard then started picking and choosing elements for his overall plan. He borrowed from both designers to mold the Colonial tapestry.

By early 1935, the construction of the golf course had begun in earnest. Under the supervision of Claude Whalen, who would serve as the club's first manager, golf pro and greens superintendent, and R.L. "Bob" Alexander, Whalen's foreman, more than two dozen laborers, using mule teams and fresnoes (a sharp cutting instrument that overturned the earth) began sculpting the fairways and greens. One of the first hired hands was a teenager named Joe Cano, who brought his mama's kitchen knife to the course to pull up weeds. Cano would work on the course for more than 40 years, many as golf course superintendent.

To develop the bent grass greens, Whalen's crew planted a combination of seaside bent grass, then popular on California courses, mixed with sand and cow manure. To combat heat, bent grass's worst enemy, the ground crew kept the greens watered frequently. Marvin Leonard kept close watch on the proceedings.

By late 1935, the golf course and stately clubhouse, highlighted by large white columns associated with the Colonial style

golf



of architecture, neared completion by contacting friends and business associates to extend a personal invitation to his "Colonial Golf Club."

The first Colonial membership fee, but had to put up \$50 as a deposit to the club. By January 29, 1936, the club had roughly 100 Fort Worth residents.

Marvin Leonard's travel and appreciation of golf had given him the Colonial club on par with the rest of the national map of golfdom. Leonard wanted nothing more than to be a part of the national map of golfdom.

He had a plan, of course. He began lobbying the United States Golf Association for the U.S. Open, America's most prestigious event, at Colonial.

the brightest jewel in Southwest golf, Leonard wanted Fort Worth golf fans to witness the shotmaking prowess of the world's best players.

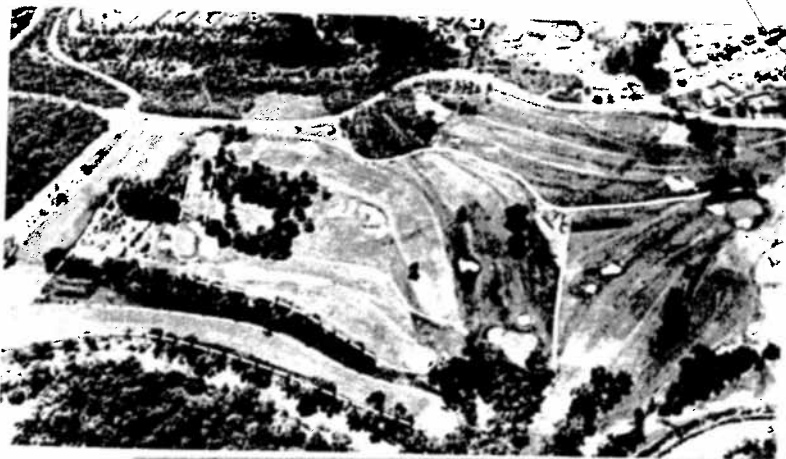
Leonard enlisted the help of Amon Carter Sr., another of Fort Worth's visionaries and a man well-connected with the leading sportswriters and sports figures in the nation, and Dr. Alden Coffey, the president of the Fort Worth Golf Association and the so-called "Father of Fort Worth Golf," to help him spur the USGA's interest.

Getting the USGA's attention was no mean feat. The group typically rotated the U.S. Open among courses in the Northeast like Winged Foot and Merion and Baltusrol. Never once had the Open championship being played in the South.

Leonard's effort to sell the USGA included a 60-minute phone call to Harold Pierce, the USGA president, who lived in Boston. When Pierce pointed out that the conversation was getting expensive (it cost Leonard \$17.40) the Fort Worth merchant replied, "That's okay. This is important."

Later, meeting with Open officials in New York, Leonard put his bid in proper perspective. Leonard and some of his friends in Fort Worth would personally guarantee the USGA a sum of \$25,000 to hold the event at Colonial. That figure, a king's ransom in its day, immediately turned the USGA's heads towards Texas. The 1941 Open would indeed be headed to the Lone Star state.

Before the U.S. Open unfolded at Colonial, however, a USGA committee reviewing the golf course for suitability of play recommended toughening a two-hole stretch on the front nine that it felt wasn't up to par. Their report stipulated that holes 4 and 5 would have to be upgraded.



Otherwise, the USGA officials found a demanding test of golf forged from the pecan trees and hackberry bushes on bottom land along the Clear Fork of the Trinity River. The aesthetics of the course came from the pecan trees overhanging the fairways and greens and the river, which meandered along nearly half of the holes.

Marvin Leonard may have gone overboard in meeting the USGA's mandate for improvements to the front nine. He bought several acres adjacent to the boundary of the golf course on Rogers Road, on which a nursery and dairy were operated. Leonard was so eager to acquire the additional land he reportedly paid the owner several times the property's value.

He then brought in golf architects Perry Maxwell and Dean Woods, who incorporated the new acreage into a three-hole stretch that would be dubbed the "Horrible Horseshoe" both for its configuration and degree of difficulty. Maxwell and Woods created Colonial's world famous par 4 fifth hole, known throughout golfdom as "Death Valley." They also lengthened the par 4 third hole by some 50 yards and extended the par 3 fourth hole to its present gargantuan (225-plus yards) self.

The fifth hole, which doglegs around the banks of the Trinity River, is universally regarded as one of the great holes in golf. It regularly appears on lists of "best holes." Arnold Palmer, who included the fifth on his personal list, once wrote, "Nearly every great player has experienced the rigors of the hole and many wish they hadn't. I consider it a great hole because, sooner or later, you must play a difficult shot. I'll take par there any time."

With the changes, which added roughly 300 yards to the course, Colonial presented a challenging 7,100-plus yard, par 70 layout that placed a premium on accurate driving. The shape of the holes, doglegs left and right, and their varying lengths and degrees of difficulty tested a player's proficiency with every club in the bag.

In late 1940, Marvin Leonard showed the proposed redesign to USGA official Joseph Dey. Dey assumed the holes would have to be completed after the Open, which was then only six months away. Leonard assured him, however, that the new holes would be ready for the Open.

Marvin Leonard could move mountains. Or in this instance, mountains of dirt. When the USGA and the game's best players rolled into Texas in the first week of June 1941 for the U.S. Open, the new and improved Colonial golf course awaited them.

Read All Stories—Call 8-1110 THE FORT WORTH PRESS Read All Stories—Call 8-1110 IN SAT. EDITIONS IN 1936

# COLONIAL GOLF CLUB OPENS JAN. 29

One of South's Finest Layouts Ready for Play

PLAN OF LEONARD'S COLONIAL GOLF CLUB

PARS, DISTANCES

Hole	Par	Yards	Hole	Par	Yards
1st	4	350	10th	4	350
2nd	4	400	11th	4	350
3rd	4	450	12th	4	350
4th	4	500	13th	4	350
5th	4	550	14th	4	350
6th	4	600	15th	4	350
7th	4	650	16th	4	350
8th	4	700	17th	4	350
9th	4	750	18th	4	350
Total	72	6300			

1841 Craig Wood 384 1958 Alvin Southon 390 1961 Doug Sanders 391 1966 Bruce Sherris 392  
 1946 Ben Hogan 399 1957 Hubert de Villiers 394 1962 Arnold Palmer\*\*\* 391-60 1967 Dave Stricker 378  
 1947 Ben Huger 390 1968 Gordon Dickinson 375 1969 Billy Casper 375  
 1948 Clayton Harter 372 1970 James Stewart 373 1971 Gene Littler 368  
 1949 Fred McThomas 372 1972 Tom Weiskopf 370 1973 Phil Gier 376  
 1950 Sam Snead 377 1974 Tom Weiskopf 370 1975 Al Geiberger\*\*\* 370  
 1951 Cary Middlecott 382 1976 Al Geiberger\*\*\* 370 1976 Lee Trevino 373  
 1952 Ben Huger 379 1977 Lee Trevino 373  
 1953 Ben Huger 382 1978 Lee Trevino 373  
 1954 Johnny Palmer 380  
 1955 Charles Walker 378

1959 Tommy Bolt 382 1963 Alvin Birch 378  
 1960 Ben Huger\*\* 375-60 1964 Billy Casper 378  
 1965 Alvin Birch 380 1965 Bruce Campbell 378

\*\*\* Member of Team Fort Worth, 1961-62  
 \*\* Member of Team Fort Worth, 1961-62  
 \*\*\*\* Member of Team Fort Worth, 1961-62

UNITED STATES GOLF ASSOCIATION  
 By Philip L. Brantley, Inc.  
 Member 16

The Fort Worth Press heralds Colonial's debut in 1936.

of architecture, neared completion. Marvin Leonard was busy contacting friends and business associates in Fort Worth to extend a personal invitation to enjoy the bent grass greens at his "Colonial Golf Club."

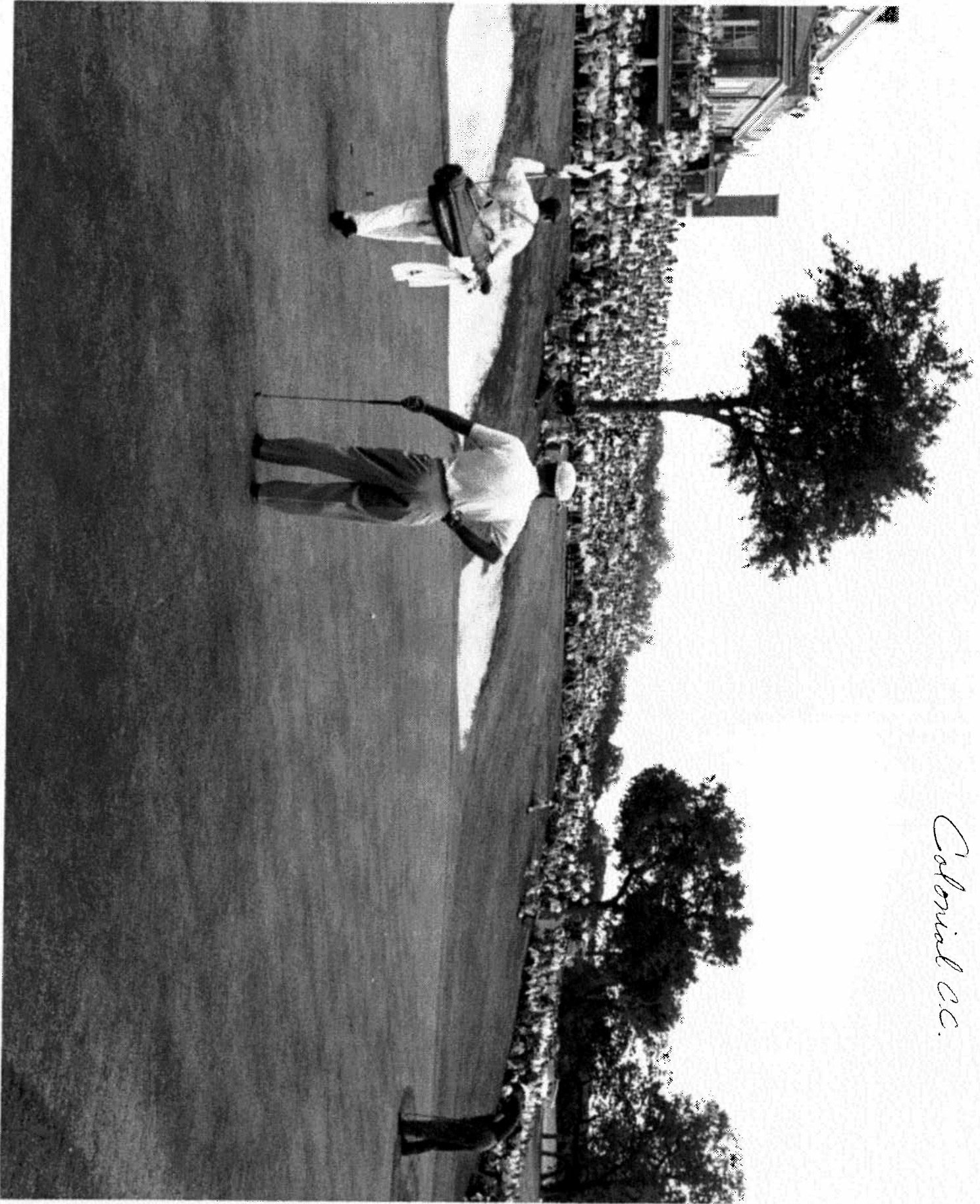
The first Colonial members were charged no membership fee, but had to put up \$50 as security deposit against charges to the club. By January 29, 1936, when the club officially opened, roughly 100 Fort Worth residents had joined Colonial Golf Club.

Marvin Leonard's travels across the country and his keen appreciation of golf had given him the insight needed to put the Colonial club on par with the best courses in the nation. Leonard wanted nothing more than to put his club on the national map of golfdom.

He had a plan, of course. In the late 1930s, Leonard began lobbying the United States Golf Association conduct the U.S. Open, America's national championship and golf's most prestigious event, at Colonial. Not only did he want to showcase



Colonial 1950's



*Colonial C.C.*

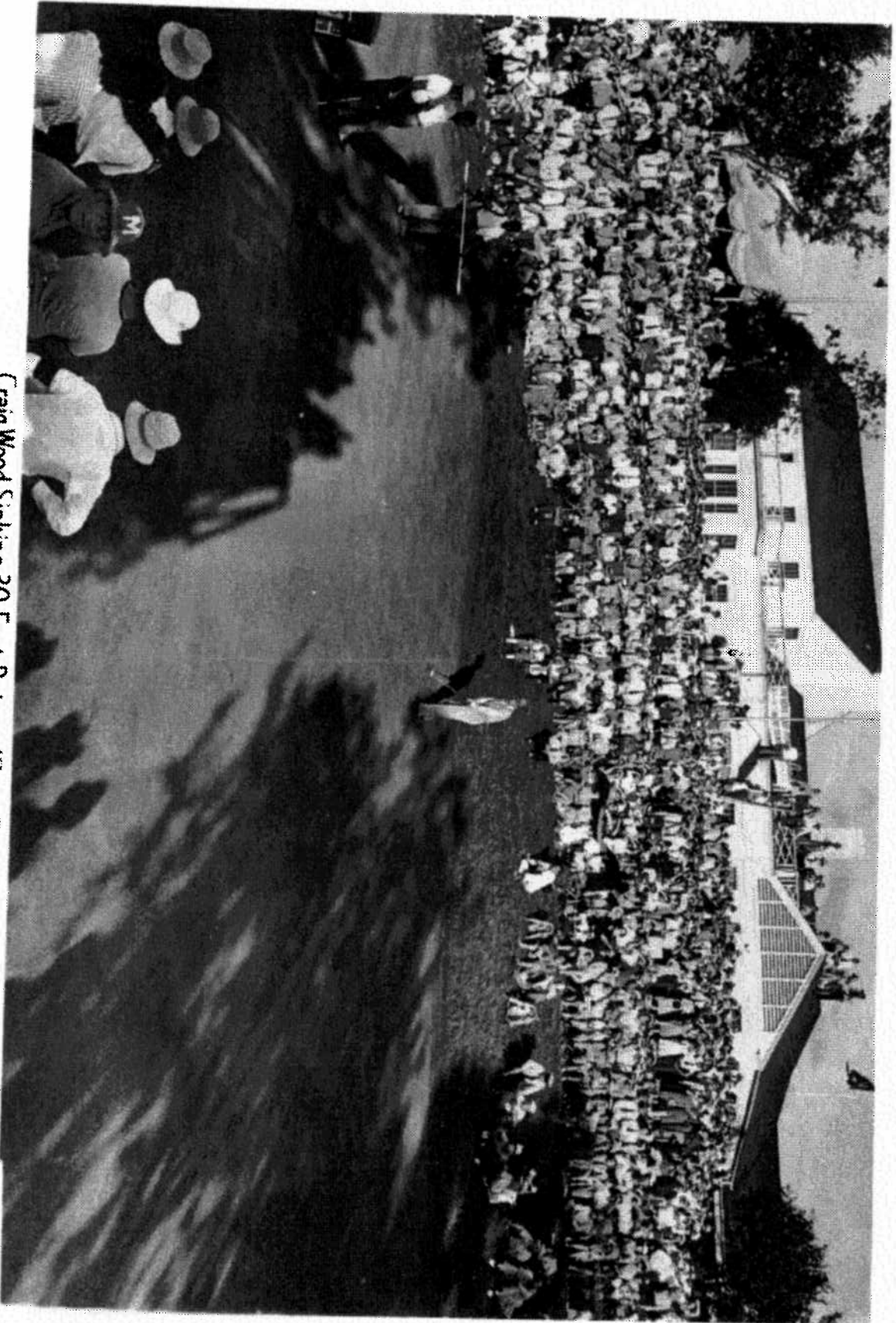
Colonial 5<sup>th</sup> Flk  
# 800 526





Colonial Club





Craig Wood Sinking 30 Foot Put on 18th. Green, Colonial Country Club, Fort Worth, Texas, to win 45th. U.S. Open Championship.

## BY JAMESON

BY WITHERSPOON, JR.  
Sport Worth Press

"YOU'RE absolutely  
nuts, Betty, no woman  
I've ever played golf  
can beat you."

These are the words of  
Little, defending  
National Open Champion,  
when he met the blond, sun-  
burned Texan who has  
won two years. It was  
for the pro-amateur  
tournament in San Antonio,

and well-aimed shots.  
In the Texas, South-  
west all but with com-  
mon sense make her deadly on

age of 12. In a few  
years she became one of  
the best, but it was not  
until she was 15.

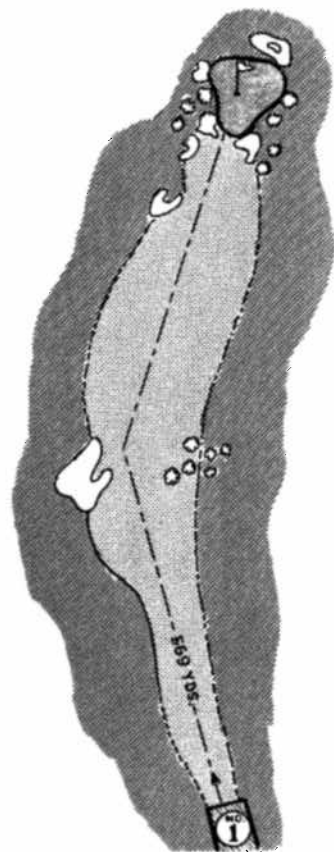
At 130 pounds, Betty  
Phi sorority, she as-  
signed several golf

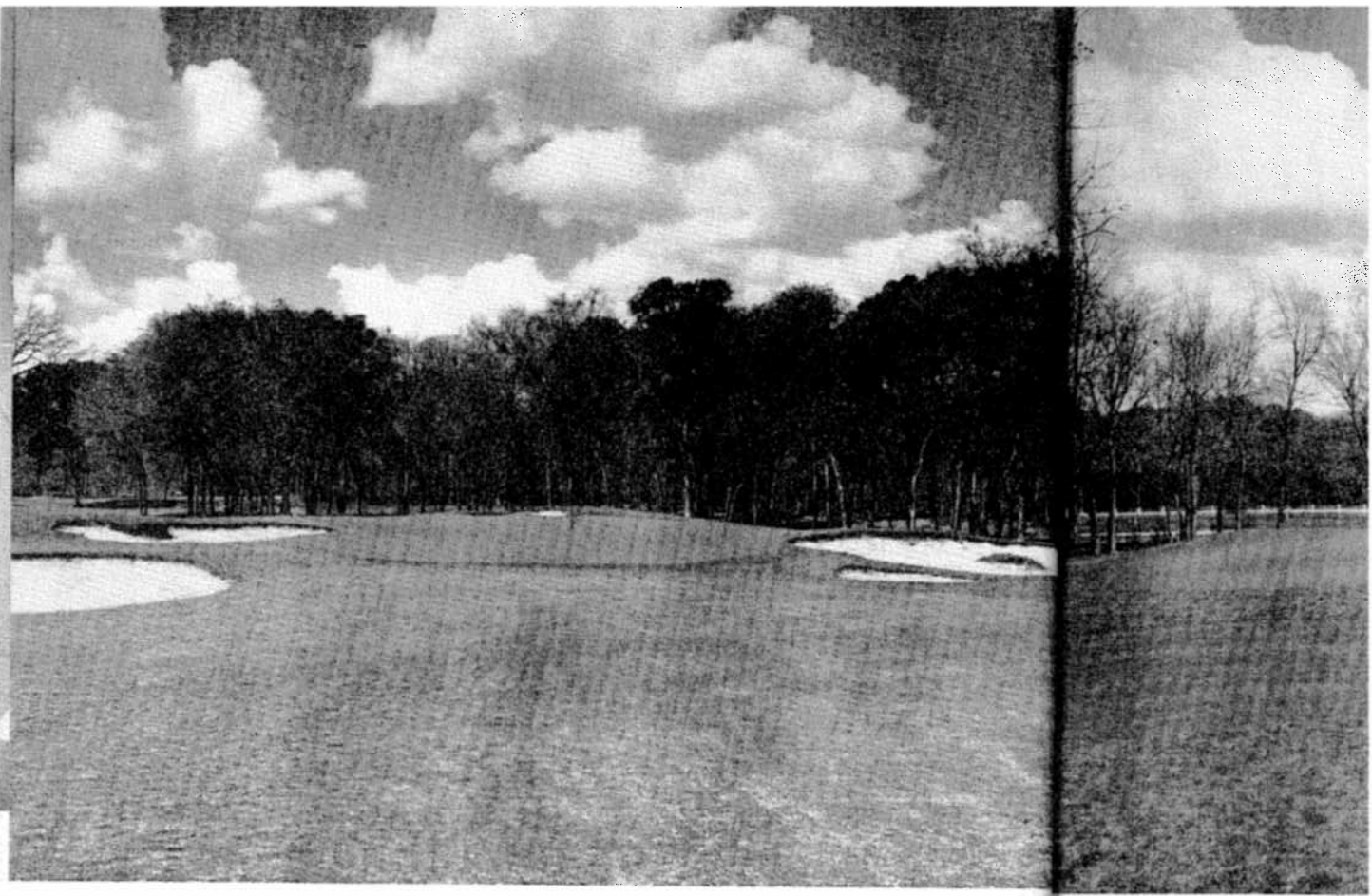


### No. 1

569 yards, par five

A beautiful starting hole that puts a premium on two perfectly placed wood shots. Heavy rough and a group of trees guard the inside of the dog-leg and a gapping trap is placed to the left to catch long hooks. From a well placed drive, the player is confronted with a second long woodshot into a narrow fairway. Few players are due to reach the tightly trapped green in two. The carpet slopes sharply from right to left and from back to front and players are certain to be confronted with tricky, side-hill putts. Traps to the left are deep and treacherous. The prevailing wind is usually across all shots to this green. Both distance and accuracy are necessary to get birdie putts.

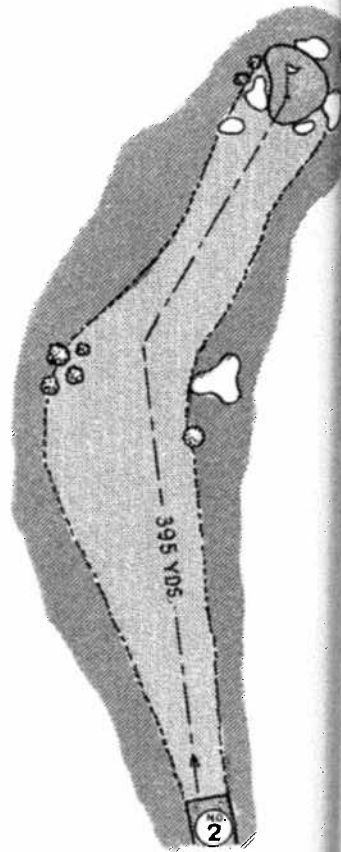




## No. 2

*395*  
395 yards, par four

A two-shot hole requiring a long fade off the tee in order to shorten the distance of a rather abrupt dog-leg. Tee is placed in a "funnel" of tall trees and extend for 75 yards to the fairway. Thus there is no chance to play directly at the hole. A well placed trap and tall tree in the rough to the right at the bend of the fairway discourage effort to cut off too much yardage with a slice. Green is trapped heavily on both sides and at the back. The front is open, however, and the comparatively flat green greatly increases the possibilities of birdies here. Carelessness is very possible on this hole.



## No. 3

468 yards, par 1

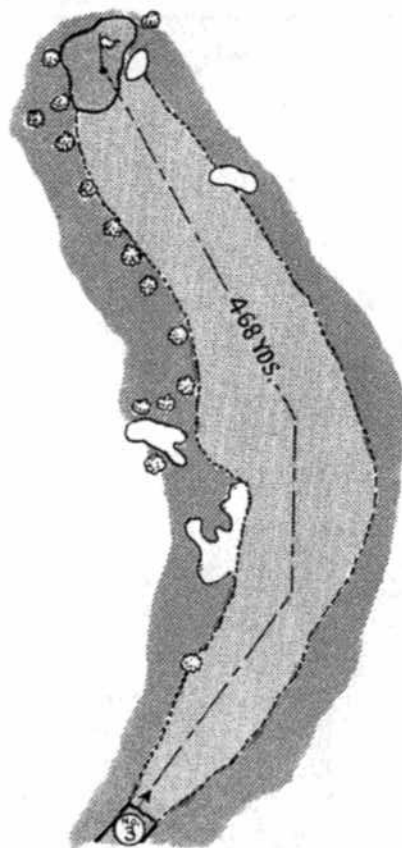
One of the finest par fours out. It plays to the favoring wind, rough prevent any shortening across the fairway around 230 yards is near rambling trap to the left way from 200 yards if hooked tee shots in a Perfectly placed drive a second shot that requires iron. Distance is the there is no necessity for a surface trap to the player as he comes into



## No. 3

468 yards, par four

One of the finest par 4 holes on the layout. It plays to the full yardage as the prevailing wind, rough and trap conditions prevent any shortening of distance by cutting across the fairway bend. A carry of around 230 yards is necessary to clear a long, rambling trap to the left. Trees line the fairway from 200 yards into the green, leaving hooked tee shots in a precarious condition. Perfectly placed drives in the fairway leave a second shot that requires a wood or a long iron. Distance is the secret of No. 3 and there is no necessity for tight trapping. On a surface trap to the right confronts the player as he comes into the carpet.

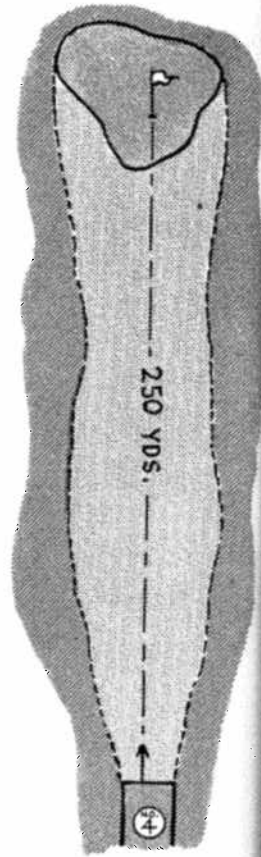




## No. 4 <sup>36</sup>

*250 yards, par three*

A one-shot hole depending on yardage and boundary trouble on the right at the green for its problems. The prevailing wind should assist the player here. However, an accurate wood shot will be necessary to reach the carpet. A gentle gully in front is dangerous to shots landing short and there is a boundary fence all the way down the right side. The green itself is entirely without traps. But it is the largest on the course and it is a simple matter to get putts of 50 feet or more. Putting will tell the story on this one.



## No. 5

*469 yards, par*

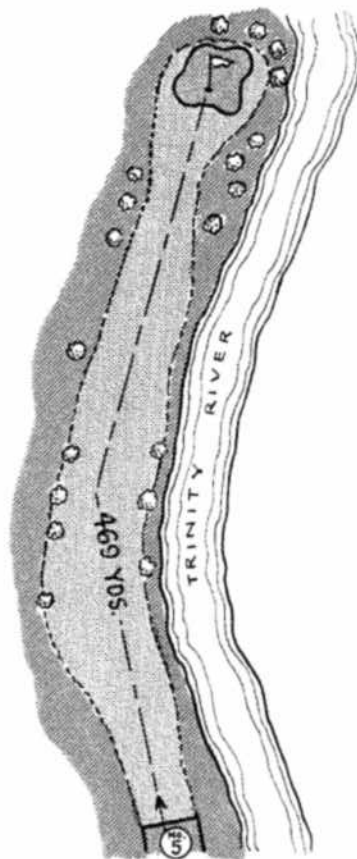
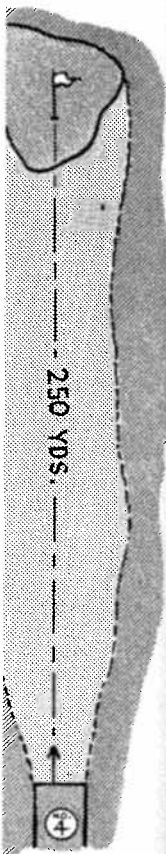
Unquestionably th one of the toughest Two perfect woods : tremely exacting str tee to green. To th and to the right, the River guard the we rows to 50 yards in be perfectly placed second shot to the g also be carefully gu or slice. There are 1 waving green calls fo stretch is known as "J

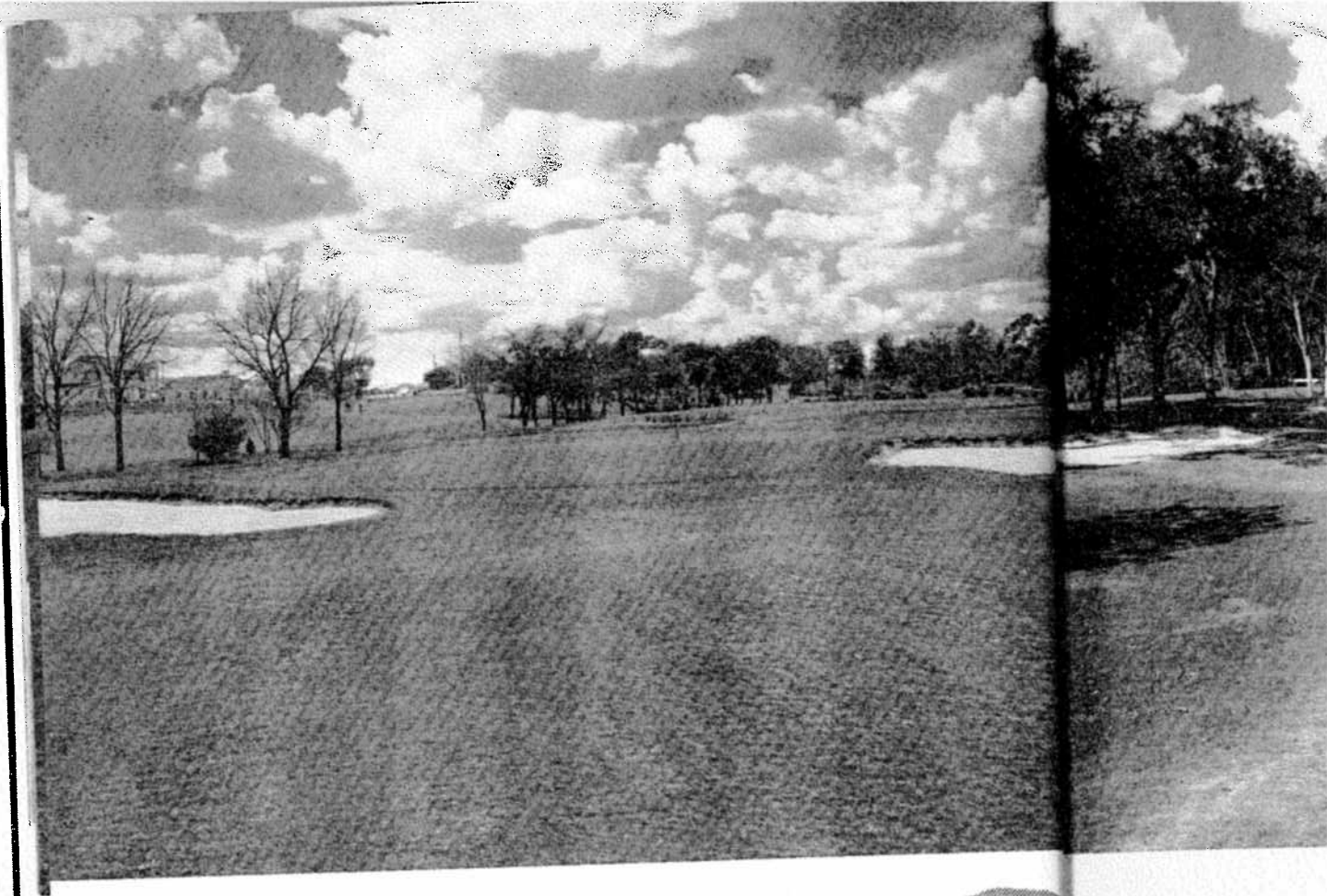


## No. 5

469 yards, par four <sup>347</sup>

Unquestionably the most picturesque and one of the toughest holes on the course. Two perfect woods are required on this extremely exacting stretch with trouble from tee to green. To the left, a wooded ravine and to the right, the Clear Fork of Trinity River guard the weaving fairway that narrows to 50 yards in spots. Tee shots must be perfectly placed and long to allow a second shot to the green. The second must also be carefully guarded to prevent hook or slice. There are no traps but the large, waving green calls for perfect putting. The stretch is known as "Death Valley."

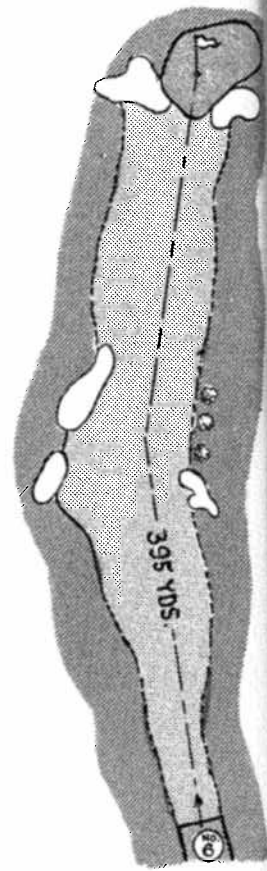




## No. 6

*395 yards, par four*

A slight dog-leg to the right, this hole favors a tee shot with just an indication of a fade. A large tree overhanging the right side of the fairway prevents the effective use of a right-to-left tee shot. Traps guarding the outside of the bend penalize the player who pulls or who's fade fails to materialize. The second shot is not difficult although the green is deeply trapped right and left. The putting area presents no particular problems and should afford an opportunity for birdies.



## No. 7

*418 yards, par four*

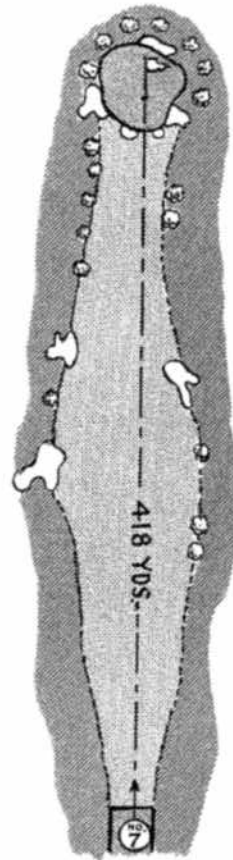
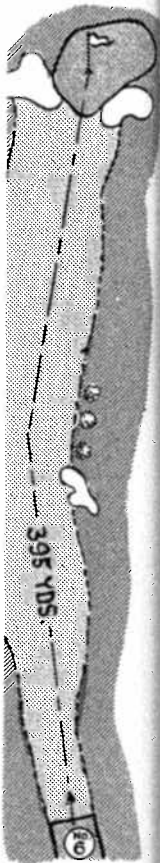
One of the favorite holes on the course but deceiving. A right-to-left shot is of greatest value. The fairway narrows to the right and left. A trap on the green, the trees on the left, and the very minimum of grass on the right. A poorly placed bunker prevents any other shot. Green is deeply trapped heavily.



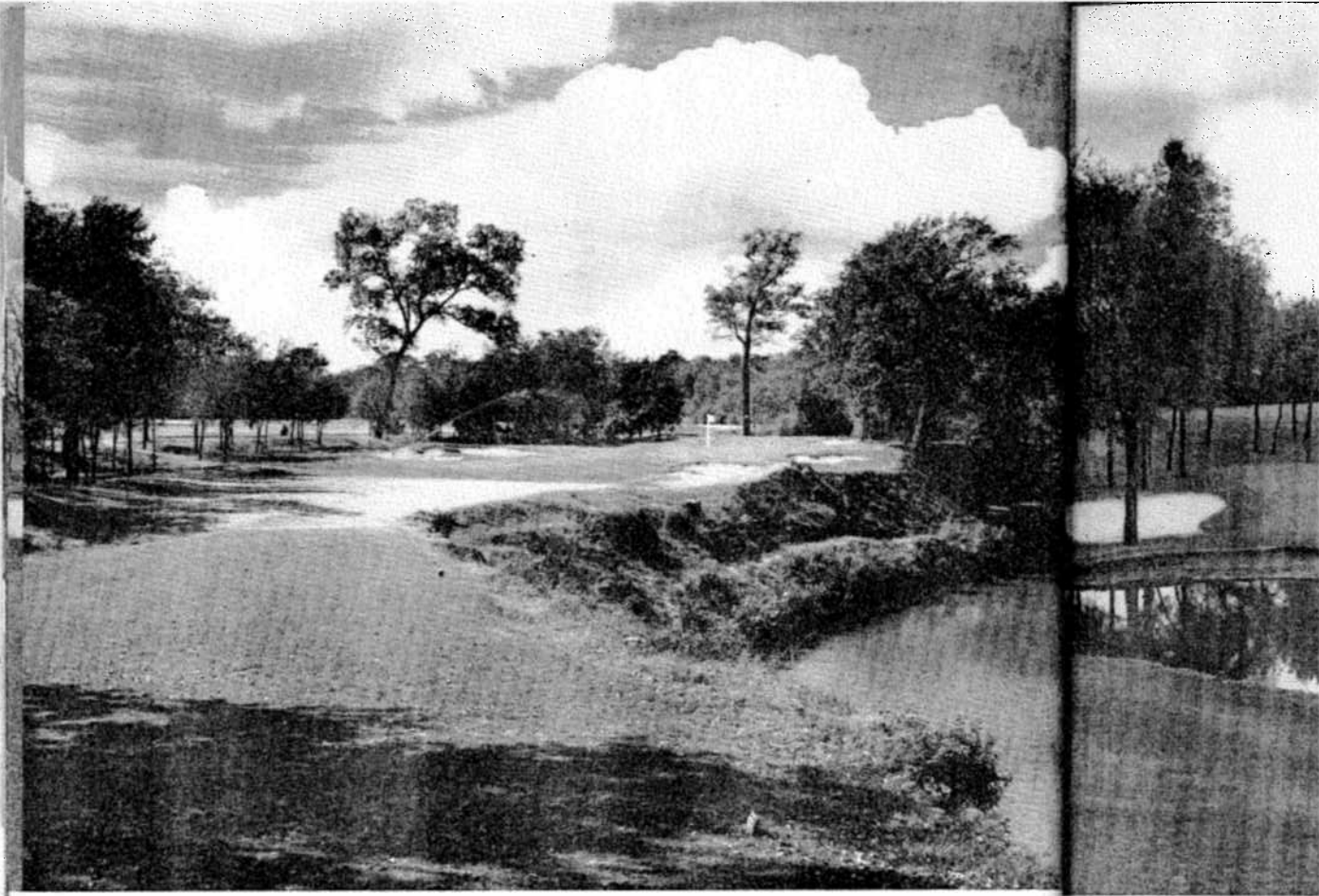
## No. 7

*418 yards, par four*

One of the few straightaway holes on the course but deceiving. Two perfectly placed shots are necessary to get home and the drive is of greatest importance. A "bottleneck," the fairway narrows sharply with trees on right and left. At a swail just in front of the green, the trees and traps cut the entrance to the very minimum for a hole of this length. A poorly placed drive either right or left prevents any chance of shooting for the green. Green is surrounded by trees and trapped heavily both right and left.



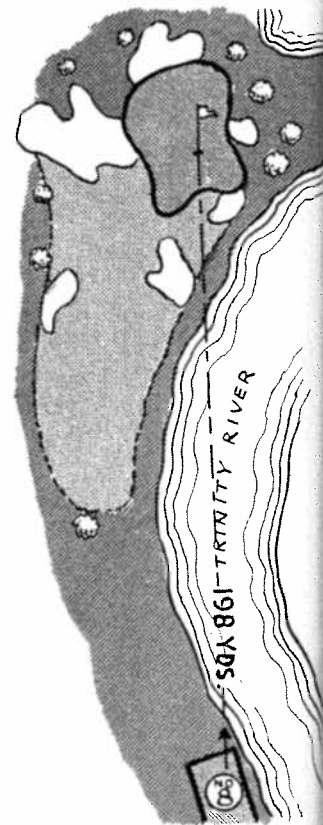




## No. 8

*198 yards, par three*

This one-shotter will require all the skill of the best shot makers. The target, from 200 yards, is very small. An arm of the river cuts directly across the line of flight, making the shot all carry. The small carpet is heavily protected on all sides by traps, making it advisable to come in from right to left. However, the prevailing wind is almost directly into the shot. The green is sharply rolling and offers many varieties of "breaks," even on the same putt. This exacting hole probably will play a major role during the Open.



## No. 9

*343 yards, par four*

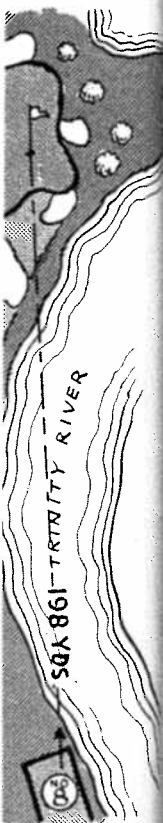
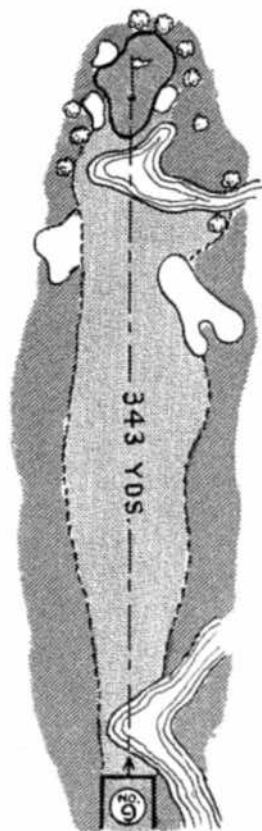
This is one of the most difficult holes on the layout. It requires a rest following the tee shot but will not allow a rest following the second shot. A tee shot cannot be made within the usual limits and the ball will not go right. A small lake, which is dangerous to overhit, is set in trees, is guarded by a line of trees on the left. Accurate pitching is required and the large green is a three-putting hole. The hole is more than difficult.



## No. 9

*343 yards, par four*

This is one of the two drive-and-pitch holes on the layout. It affords something of a rest following the strain of the preceding holes but will not permit carelessness. The tee shot cannot be allowed to stray beyond usual limits and there is a heavy trap to the right. A small lake in front of the green is dangerous to over-long hitters. The green, set in trees, is guarded by traps right and left. Accurate pitch shots will be necessary and the large green offers opportunity for three-putting. The hole is more picturesque than difficult.

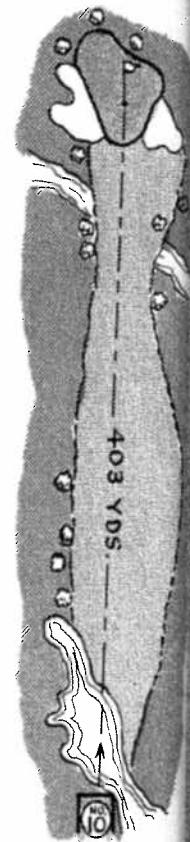




## No. 10

*403 yards, par four*

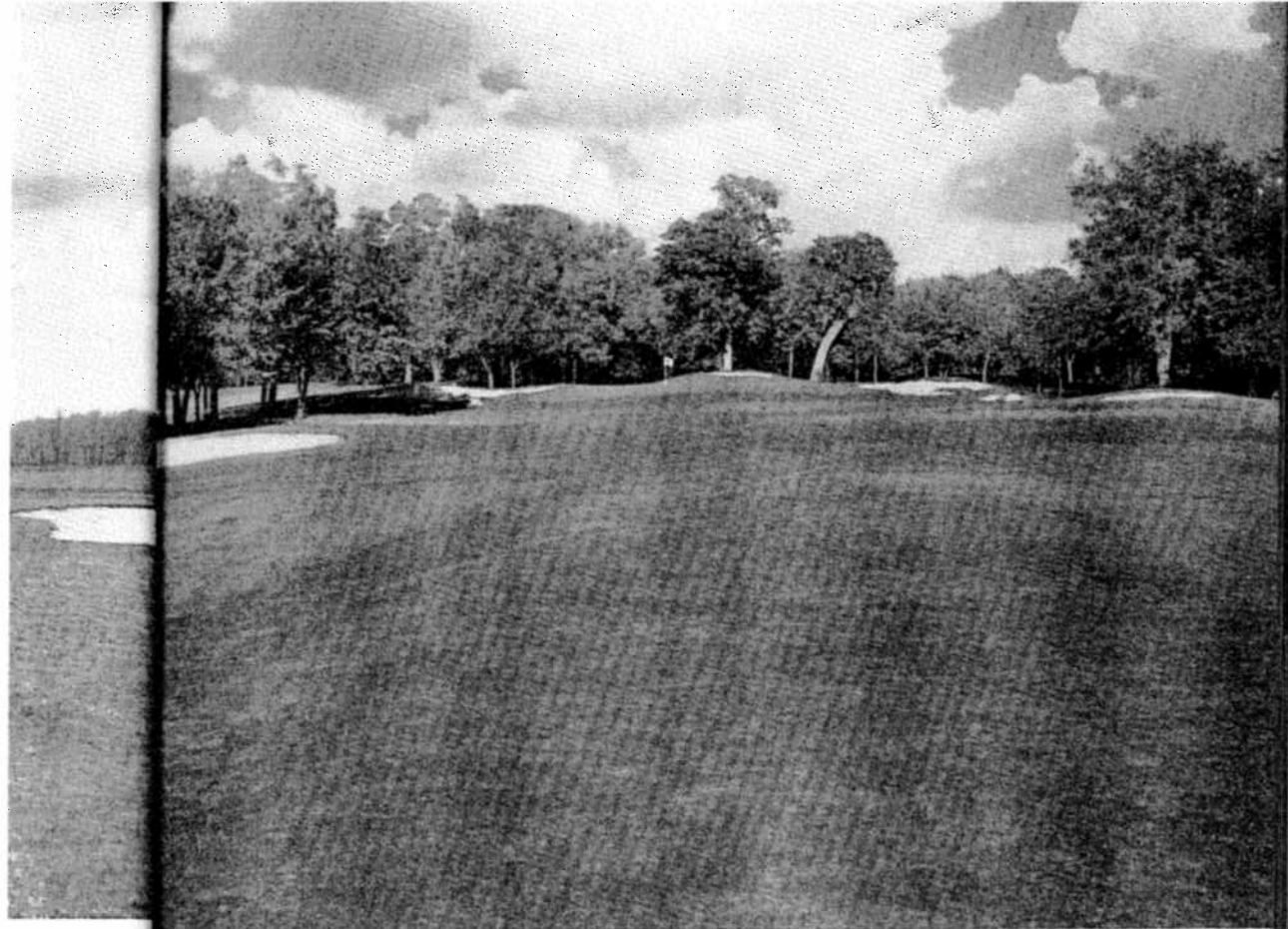
This starting hole on the back nine is another that requires judgment and accuracy. The opening shot is over a small lake that stretches 100 yards down the left side. Placing of the tee shot is all important. Sharp hooks are endangered by the lake and pulls smash into tall trees or deep rough on the left. Fades are heavily penalized because the fairway narrows sharply by tall trees on the bank of a deep gully just 50 yards in front of the carpet. It is possible for long hitters to reach trouble on the slopes of this gully. Strong iron second shots are necessary to reach the green from well-placed tee shots. The carpet is trapped right and left.



## No. 11

*593 yards, par*

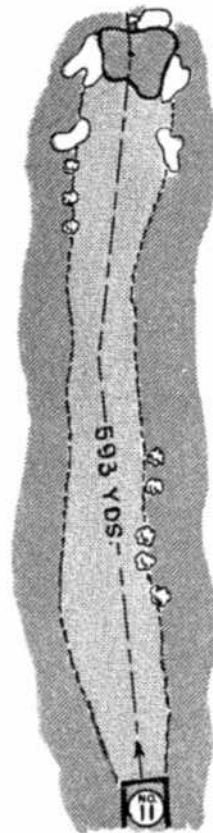
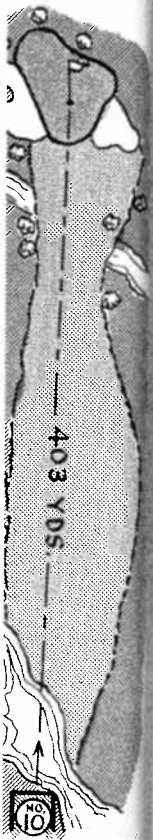
Distance is again a factor. The opening shot must be placed right and heavy to avoid a ravine with water on the left. The second shot from the tee to the green is a long shot with traps to the left and right. The green is on a premium surface. A brassie or spoon is necessary to reach the green. A long shot is trapped just in front of the green. Perfect wood shots are necessary. The green surface can be heavily penalized.



## No. 11

593 yards, par five

Distance is again the keynote on this second par five on the layout. However, tee shots must be placed to avoid trees to the right and heavy rough to the left. A deep ravine with water runs down the right side from tee to green and there are dense trees with traps to the left from 150 yards into the carpet. Two woodshots are necessary and the premium is on an accurate second with brassie or spoon. Green is rolling and deeply trapped just in front and to each side and back. Perfect wood play here will afford birdie opportunities although the huge putting surface can be tricky. Carelessness will be heavily penalized.

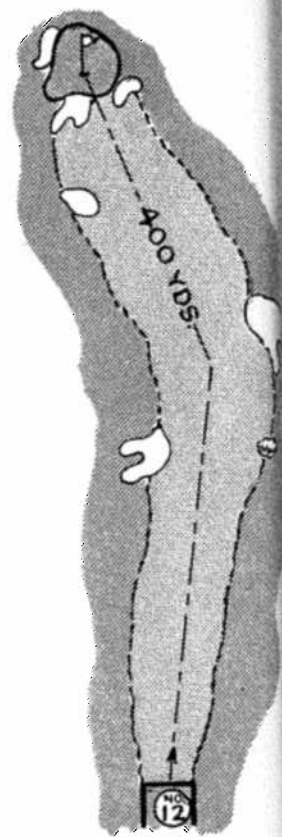




## No. 12

*400 yards, par four*

The heaviest trapped hole on the course, this stretch is a deceiving dog-leg to the left. From the tee in tall trees, shots must be played to bend of the fairway, care being taken to avoid timber to the left and rough to the right. Traps both right and left are placed to catch straying tee shots. Second shots with middle irons are fairly simple but traps line the fairway on both sides to the carpet. There is sand on both sides close in and another trap on the left backhand edge. Green is fairly flat and again there are birdie possibilities for accurate players. River follows fairway on the right but is far enough removed to offer little threat except for a wild fade.



## No. 13

*192 yards, par*

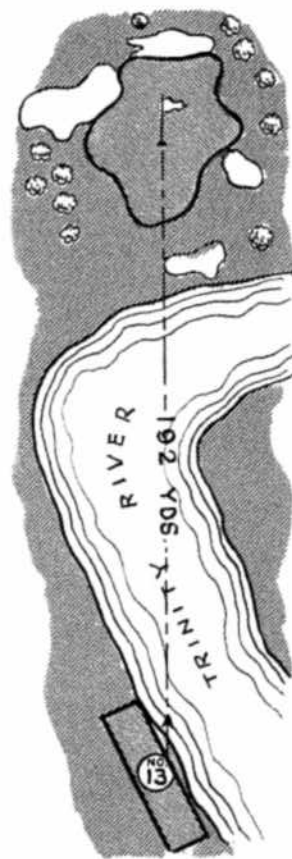
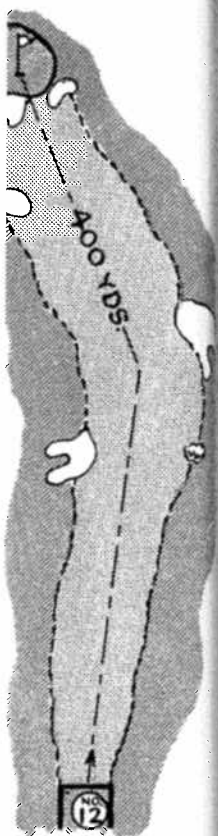
One of the most able-looking holes on the course, this stretch is all carry over the Trinity River. Absence of trees with long iron or long club selection carries in wind quarters in cottonwood guards trees on the opposite side. Intentional hooks are completely surrounded by large and rolling, offering possibilities for three-putting. The opening shot is the smallest on the course.

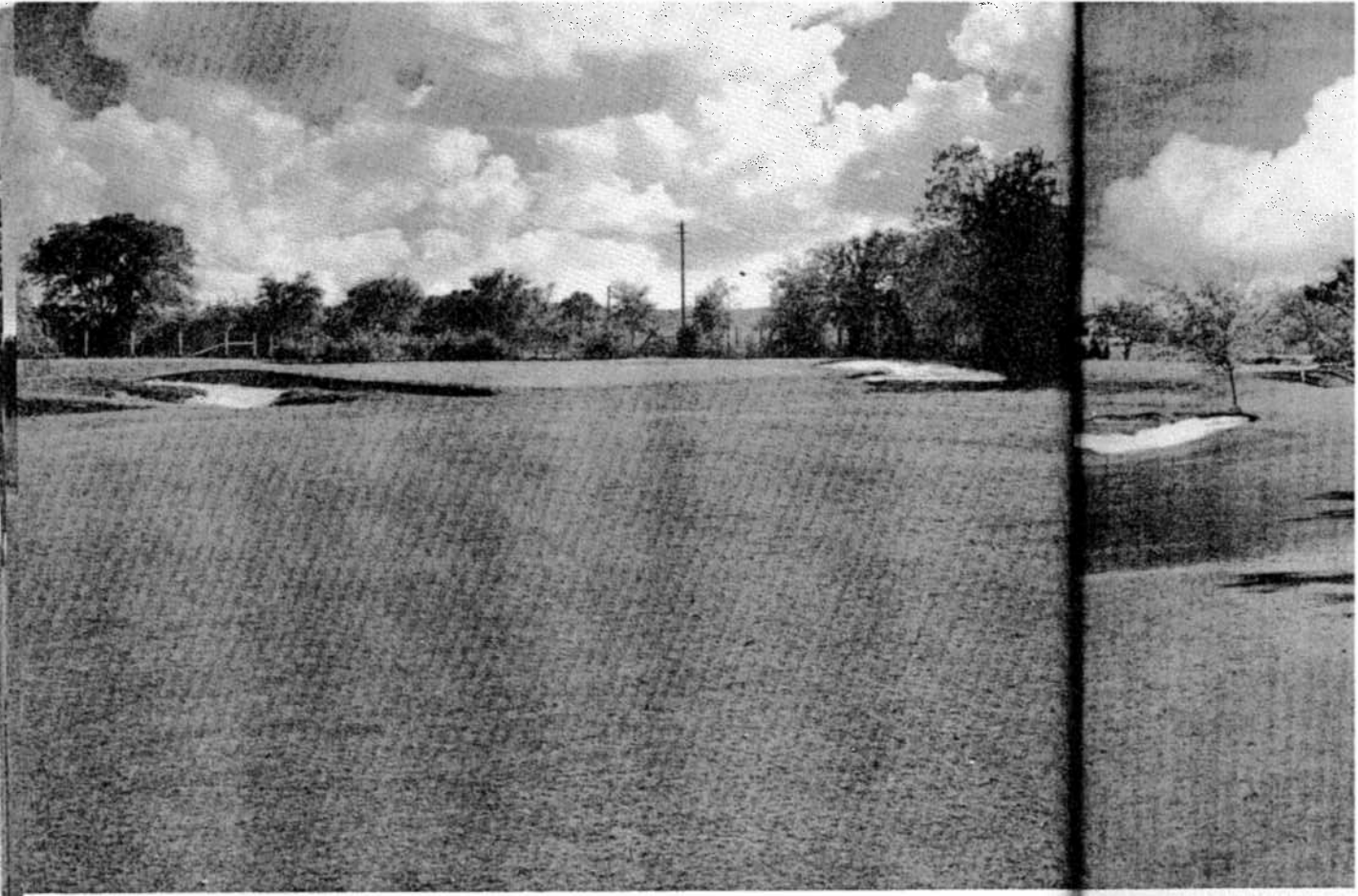


## No. 13

*192 yards, par three*

One of the most interesting and formidable-looking holes on the course. This one-shotter is all carry over a deep bend of the Trinity River. Absolute accuracy is required with long iron or light wood and judgment in club selection can play a big part. Prevailing wind quarters into the shot. A towering cottonwood guards the green on the left and trees on the opposite bank of the river make intentional hooks dangerous. Deep traps completely surround the green which is large and rolling, offering ample opportunity for three-putting. Emphasis is definitely on the opening shot and the target is one of the smallest on the course at the distance.

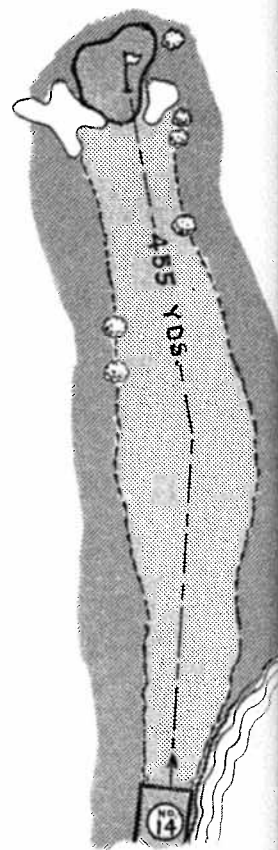




## No. 14

*455 yards, par four*

Into the face of the prevailing south wind, the fourteenth is one of the most difficult par fours on the layout. It is a matter of distance. From the tee, placed on the river bank, a carry of around 220 yards is necessary to reach the center of the fairway. In most instances, the second shot will require big irons or even woods for the longest hitters. Tee shots too close in on the left side will preclude any shot at the carpet because of trees. The righthand approach is difficult because of two towering pecan trees some 50 yards short of the green. Rambling and deep traps hug the left side of the putting surface and there are less difficult surface traps to the right, backed up by a stand of smaller trees. Green is large but fairly flat. Main difficulty is in reaching it in regulation.



## No. 15

*447 yards, par four*

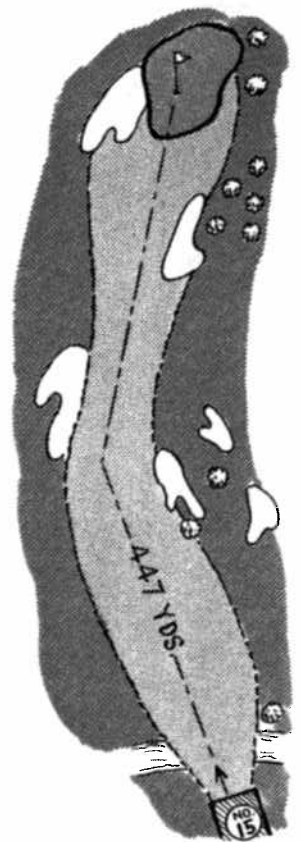
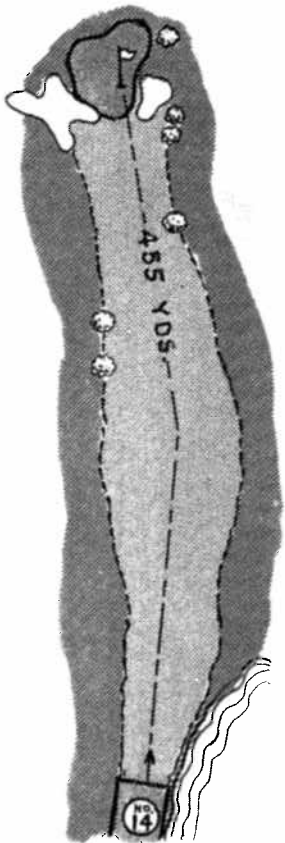
This hole is so exacting on the stretch from tee to green. Fairway bulges out, breaking dog-leg here. A deep ravine left cuts across the tee. To the right, traps awaits even a 230 yards from tee. From perfectly placed and tricky second shot left of green including tree. Right side is boundary fence. Steep sloping green curls around left. Difficult long putts be-



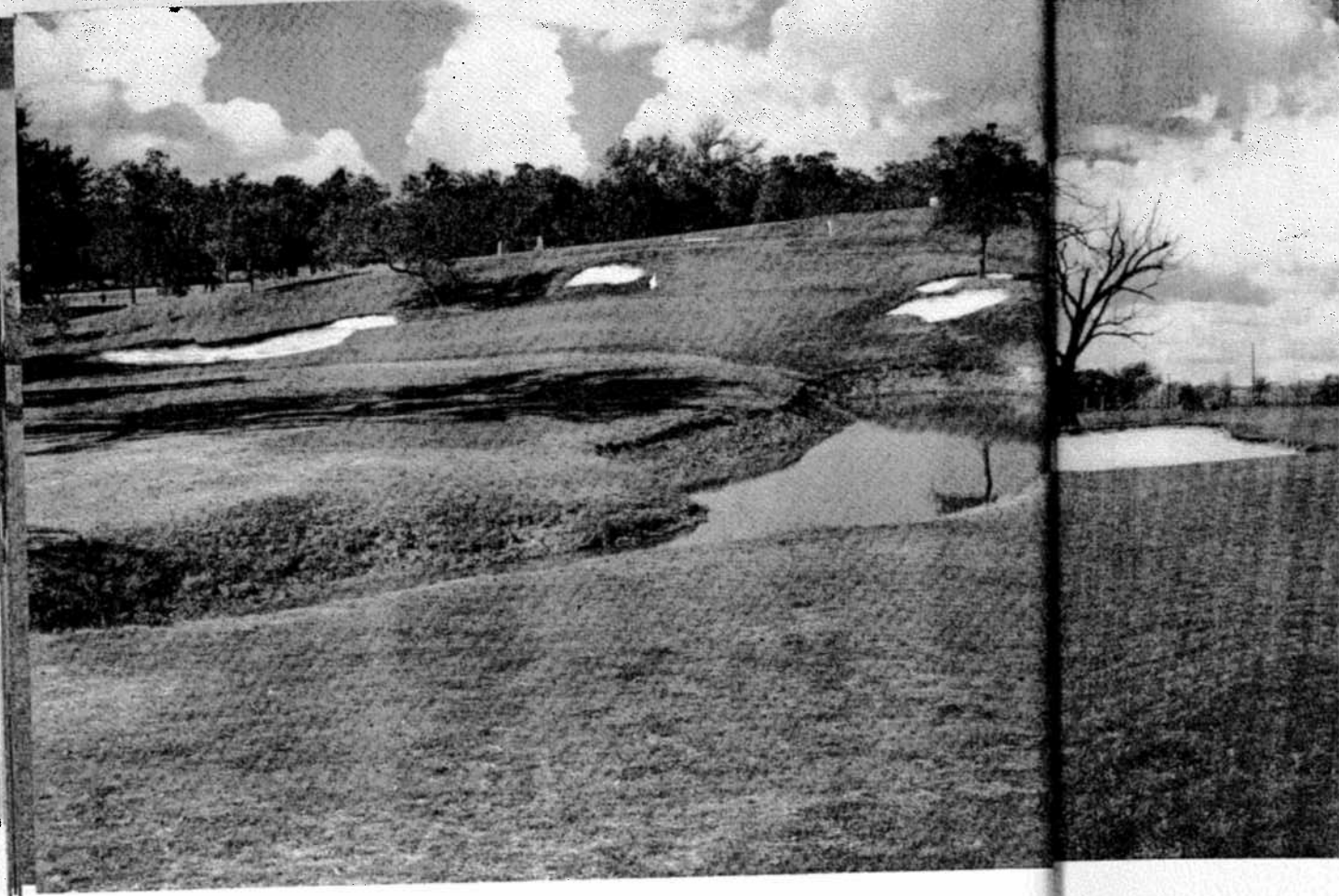
## No. 15

*447 yards, par four*

This hole is sometimes called the most exacting on the stretch. A boundary fence stretches from tee to green on the right. Fairway bulges out to left making a slow-breaking dog-leg. Every shot must be hit here. A deep ravine with tall trees on the left cuts across the fairway 100 yards from tee. To the right, a sharp hill studded with traps awaits even a slide slice. Fairway some 230 yards from tee narrows to 35 yards. From perfectly placed opening shot, long and tricky seconds are necessary. Trap to left of green includes a bothersome small tree. Right side is dangerous with sand and boundary fence. Small ravine with water curls around left and backside of carpet. Steep sloping green offers sharp breaks difficult long putts both up and down.



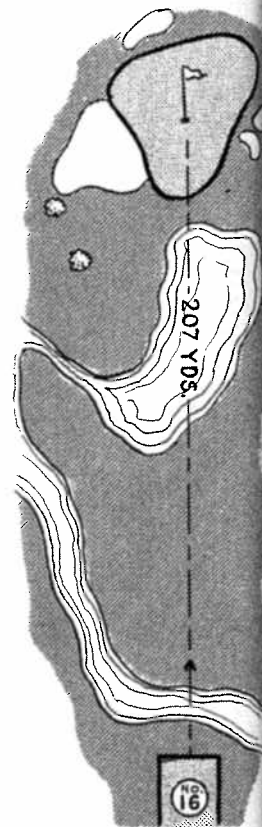




## No. 16

*207 yards, par three*

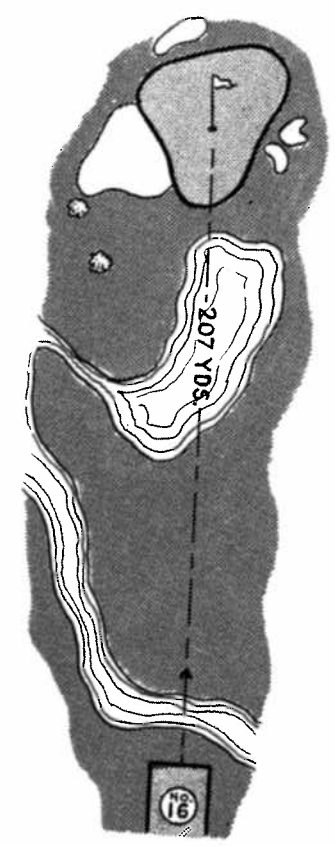
Another long and spectacular one-shotter. Ravine with water courses just in front of tee and halfway to the green bulges back into a small lake that cuts diagonally across the fairway to the front corner of the green. Large trap to left with formidable islands of high grass. Hillside traps and small tree on righthand corner catch shoved shots. Small surface trap behind. Wind is usually with tee shot. Again accent is on accuracy with long irons. Vast, rolling green makes for frequent three-putts. A fairly simple par three that can penalize carelessness severely.



## No. 17

*406 yards, par*

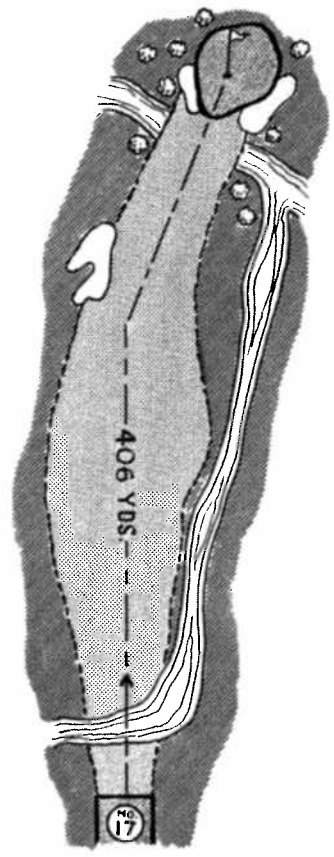
One of the few di 17 also calls for car hind a deep ravine trouble in all direct the right are trees that extends almost left is heavy rough traps to catch long into the green narrow a deep gully. Tow right is known as tall shots from that the carpet. Traps the front corner of yards. Again it is position off the tee shot. Green offers i

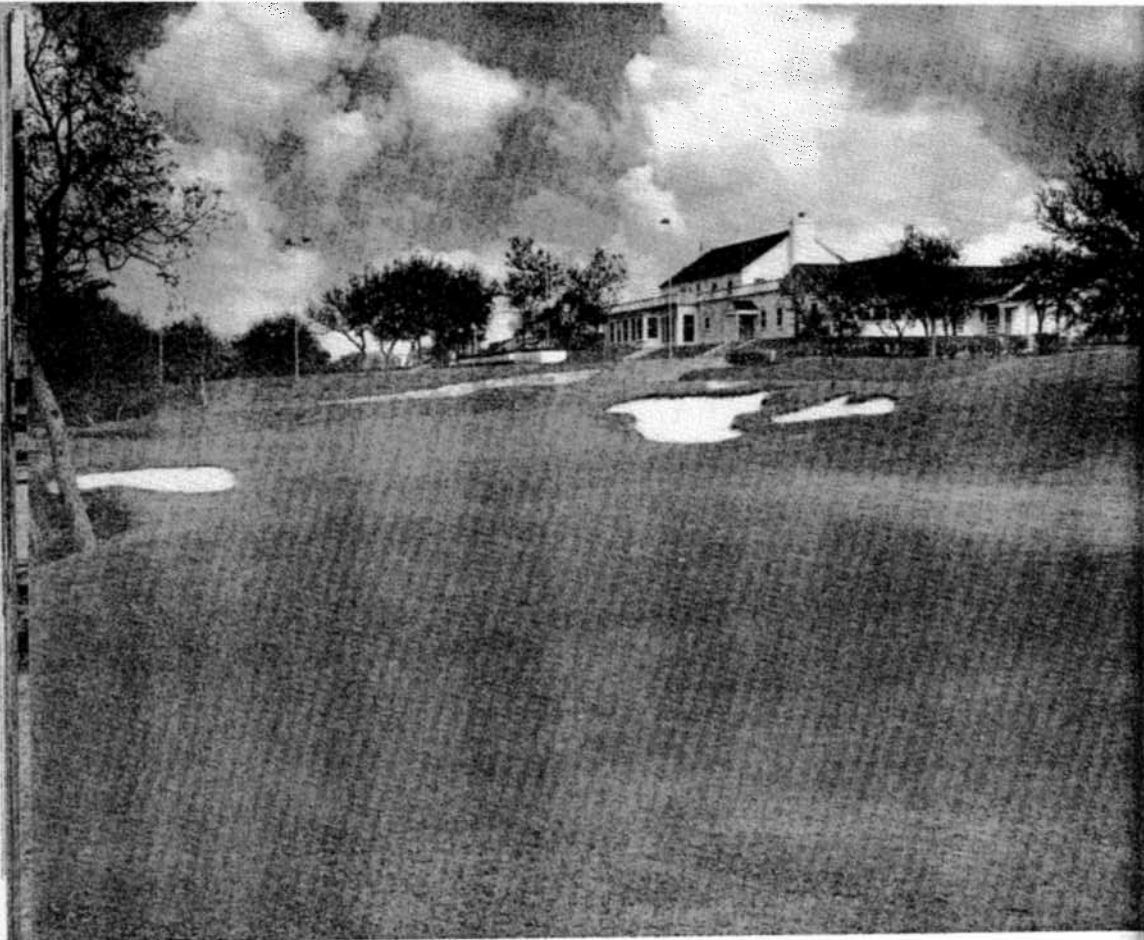


## No. 17

406 yards, par four

One of the few drive and pitch holes, No. 17 also calls for care. From a high tee behind a deep ravine, wood shots can find trouble in all directions and distances. To the right are trees and the curving ravine that extends almost to the green. To the left is heavy rough and perfectly placed traps to catch long pulled shots. Opening into the green narrows to some 50 yards at a deep gully. Towering pecan tree on the right is known as "Big Annie" and is so tall shots from that side must be sliced into the carpet. Traps both right and left cut the front corner of the green to about 10 yards. Again it is a question of getting position off the tee for a fairly easy second shot. Green offers no particular difficulties.

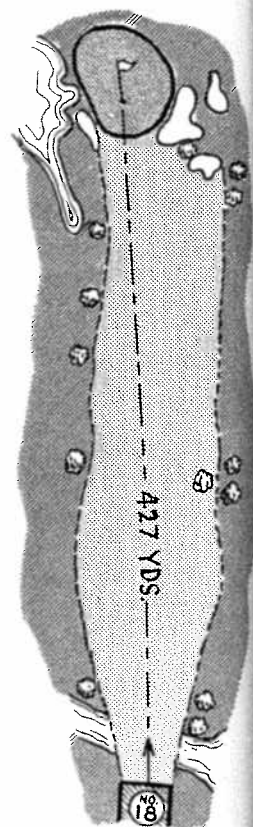




## No. 18

*427 yards, par four*

A fine and difficult finishing hole. From the long tee, drives must thread narrow opening through trees into a curving, rolling fairway. Pulled shots here leave little chance for a shot to the green because of trees. To the right is a ravine with water. Fairway from 200 yards in slopes and rolls in all directions, leaving little chance of a flat lie. Second shots of around 200 yards must be well placed. Near the green, which is festooned with traps on the right, the "break" is sharply toward the left in the direction of the lake which runs from 100 yards out all along the left side of the carpet. The green itself is one of the largest and most difficult on the course. A single misstep here and any score will soar.



## THE FO

THE lion's share  
pionship tourna  
which is sponsoring

One of the first  
ciation was organiz  
teur championship t  
dent. W. C. Northe  
in that capacity eve

Under the spon  
was doubled in size  
State's most enthus  
dency. The group's

In 1936, a city j  
some 200 young pla  
nament, Fort Wort  
of young swingers c

The Association  
intercity matches a  
turing outstanding  
their eye on a "big  
in 1938 and the hu  
Dr. Coffey and Ma  
working on the Op  
the U. S. G. A. acc

Although defin  
the Association has  
sive leadership, the  
Texas golf for ma  
every year until the