

No. 1, 355 yards, par 4

The starting hole is doglegged to the left. A well placed drive will come to rest in the right center of the

fairway leaving a relatively simple short iron shot to the large green. The very long hitter will make this hole appear easy and is likely to be rewarded with a birdie.



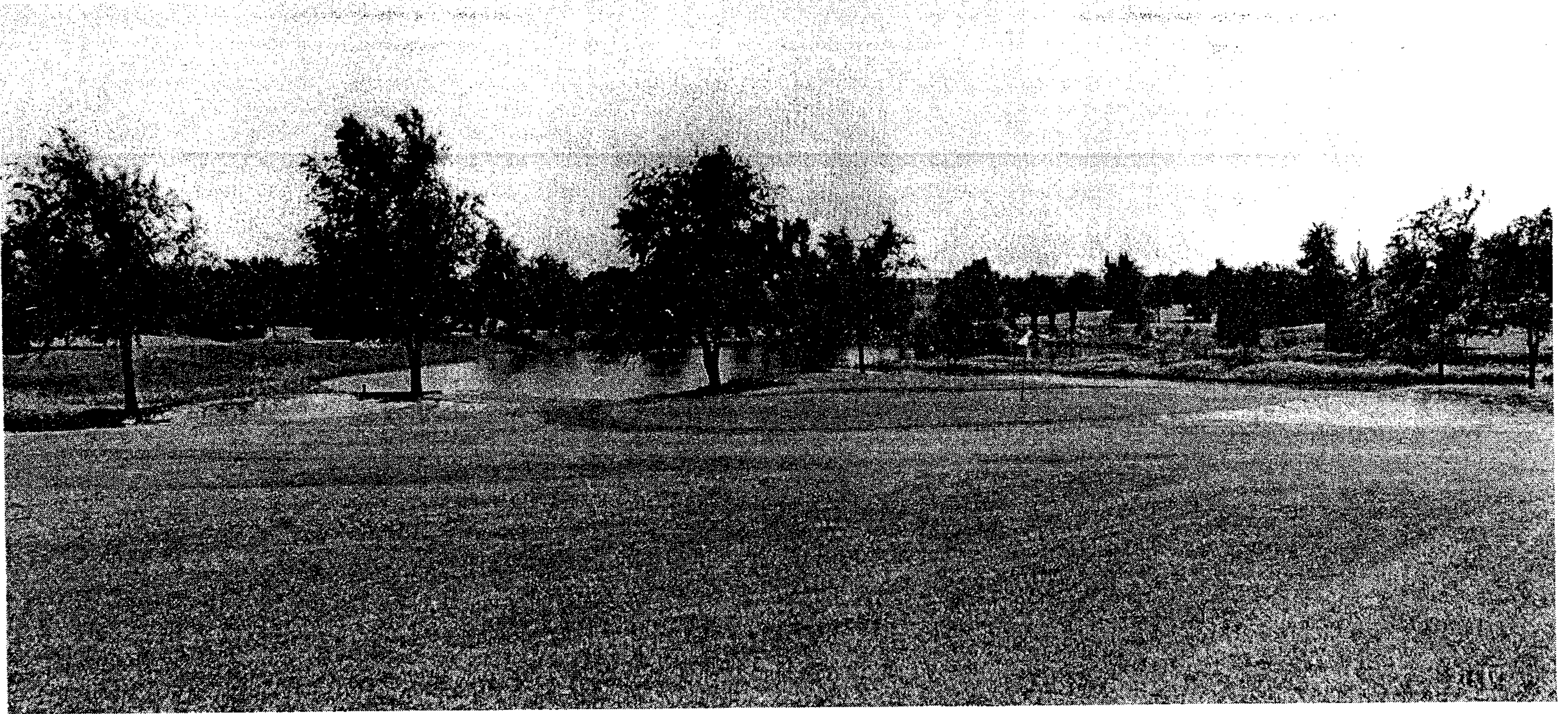
No. 2, 365 yards, par 4

Just the opposite of the first hole, the trouble here is around the green. A lake at the right catches the pushed shot which may be as long as a 3 iron. The green breaks downhill and misery in front awaits the timid soul who falls short.

No. 3, 180 yards, par 3

No more picturesque hole will greet the nomadic golfer anywhere. The tee is built on the bank of a lake at the end of a lane of trees. The green is on top of a knoll. Between tee and green is "suicide stretch" of unbroken ground and the wildest rough.





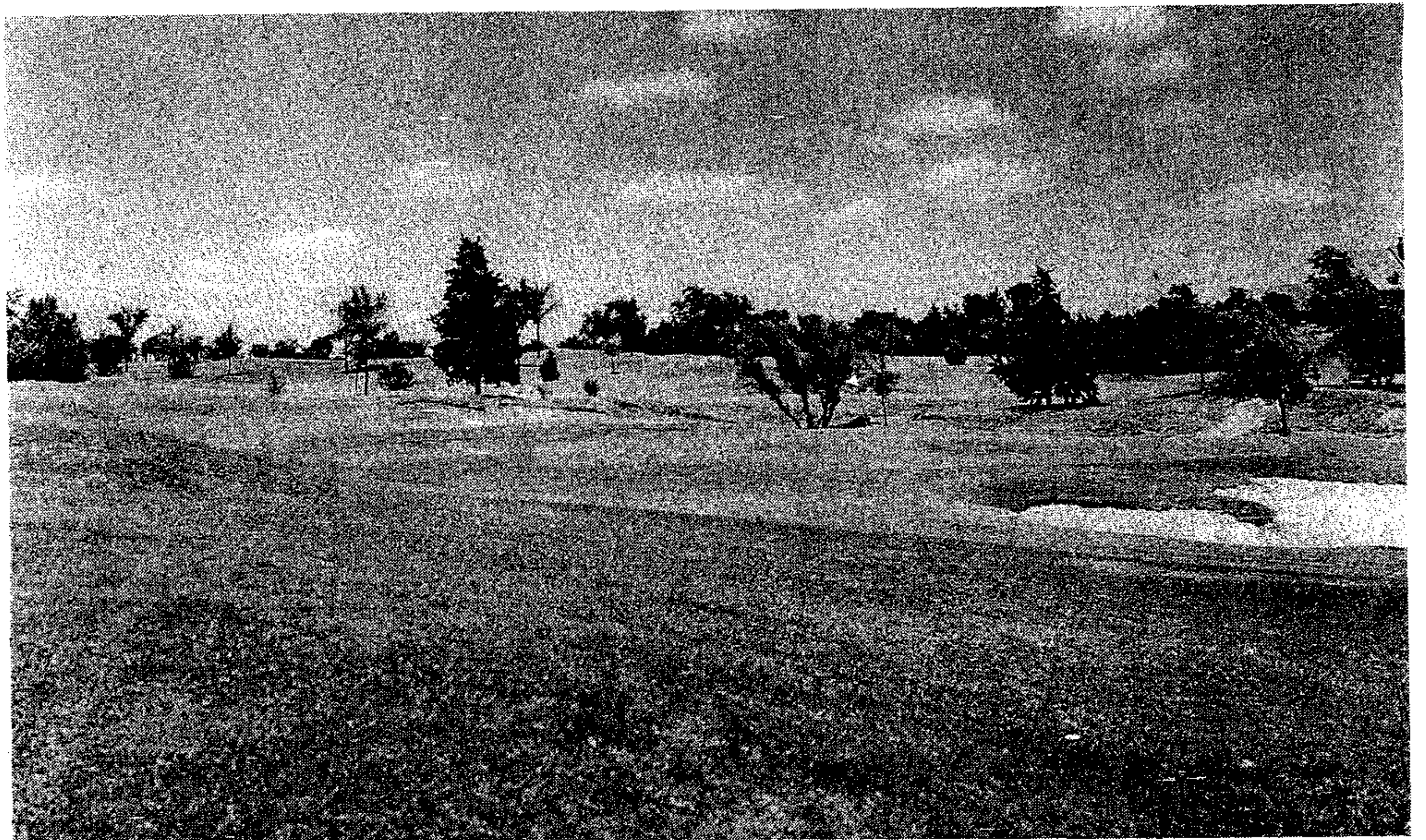
No. 4, 396 yards, par 4

Another dogleg to the left, requiring a whistling tee shot and a carry of 225 yards across a winding creek and

a wide draw to a high fairway that looks a mile away from the tee. Water to the left and beyond the green will down the bold or erratic shot. Interesting hole.

No. 5, 555 yards, par 5

The long hitters will try to reach this one in two shots, but the green, sunken in an olive bowl effect, is treacherous, big, undulating and three putts are not uncommon.



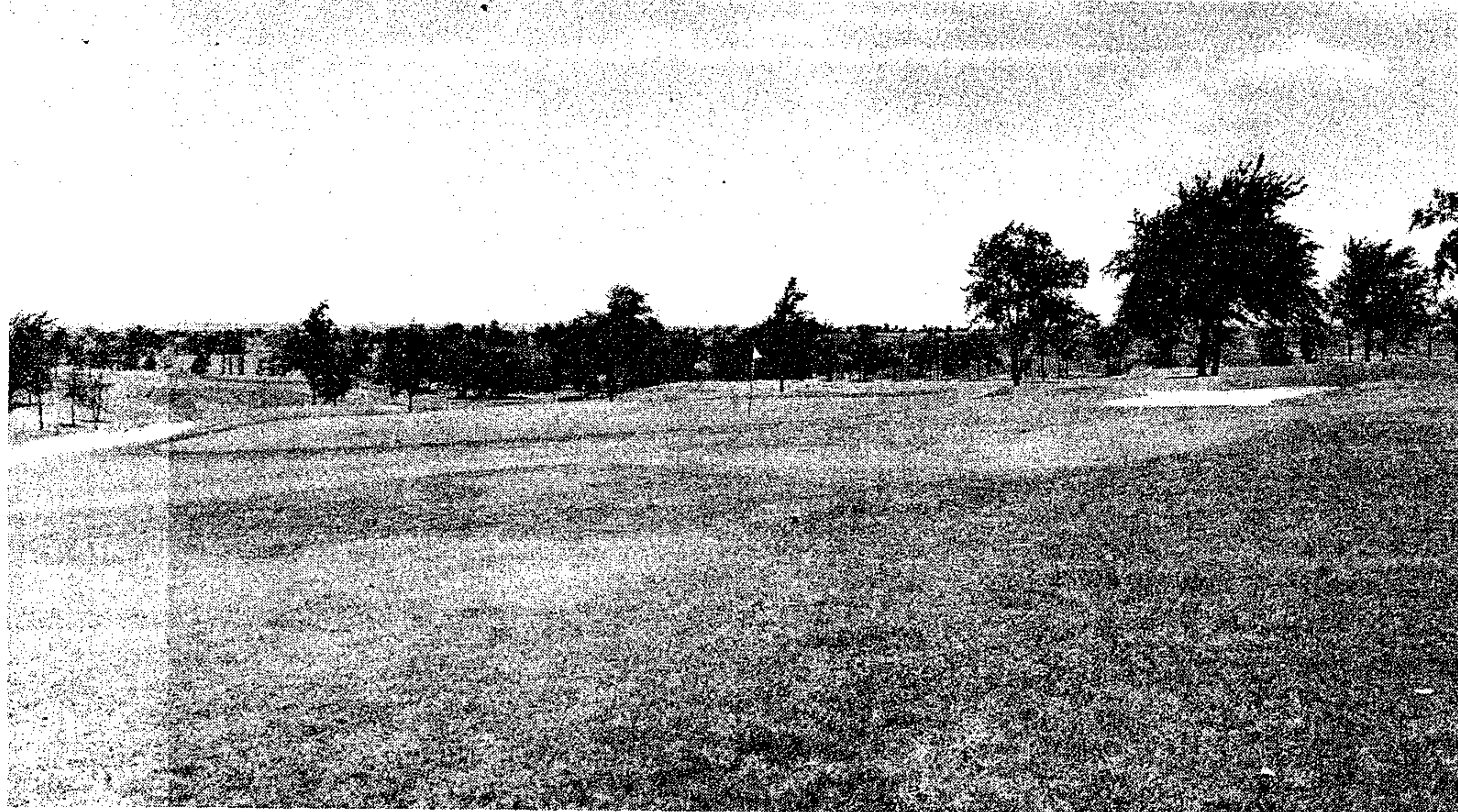
No. 6, 167 yards, par 3

The second of the one-shoters, sometimes a 6 iron, at other times a 3 iron, with a cross wind to combat. The generous green is elevated and well guarded with traps at right and left.

1939

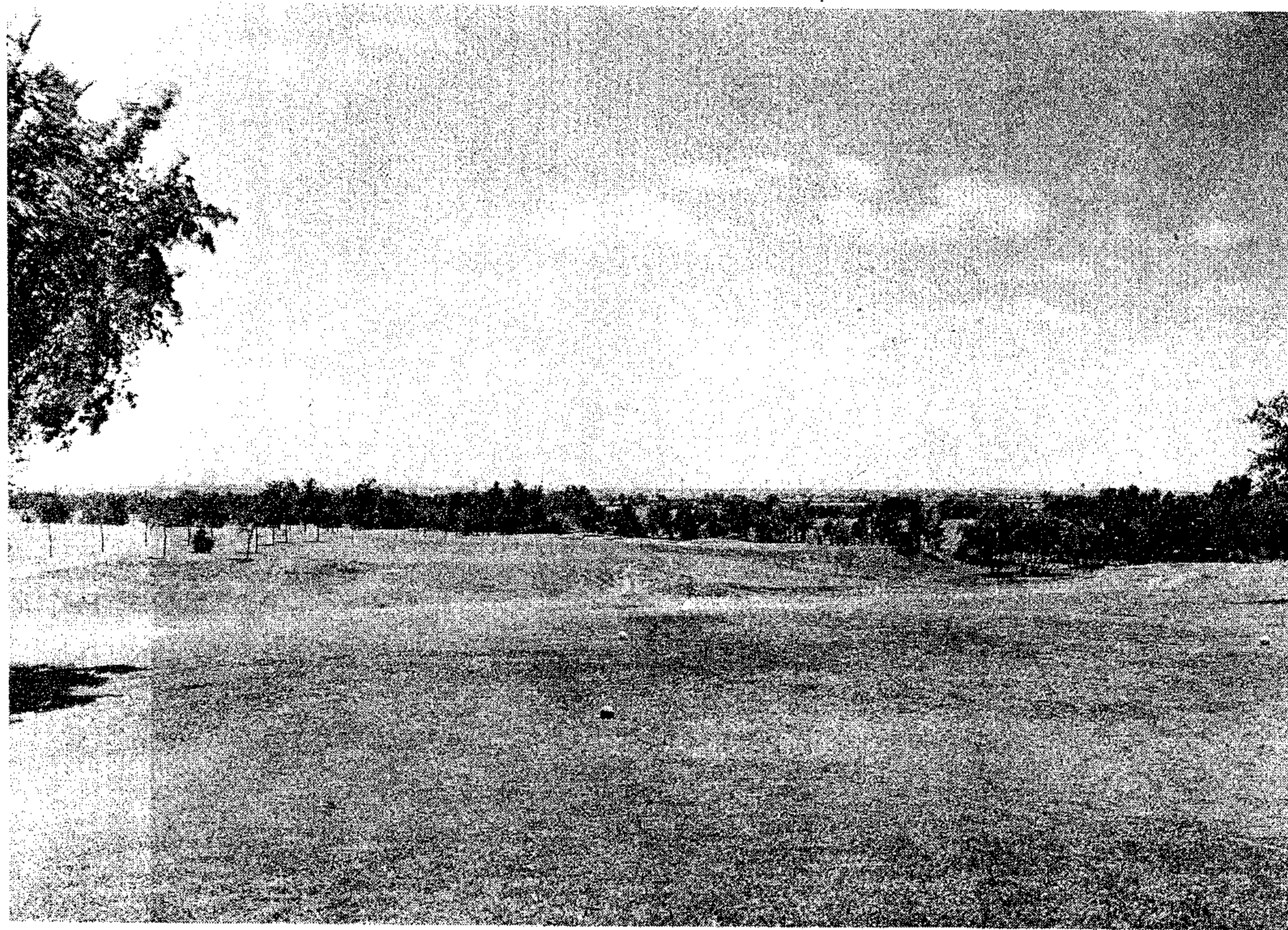
No. 7, 395 yards, par 4

Now the player heads south again, straight into the prevailing wind, and this is one of the harder pars. The tee shot falls into a small valley, and the second must stick on a sloping, sidehill green.



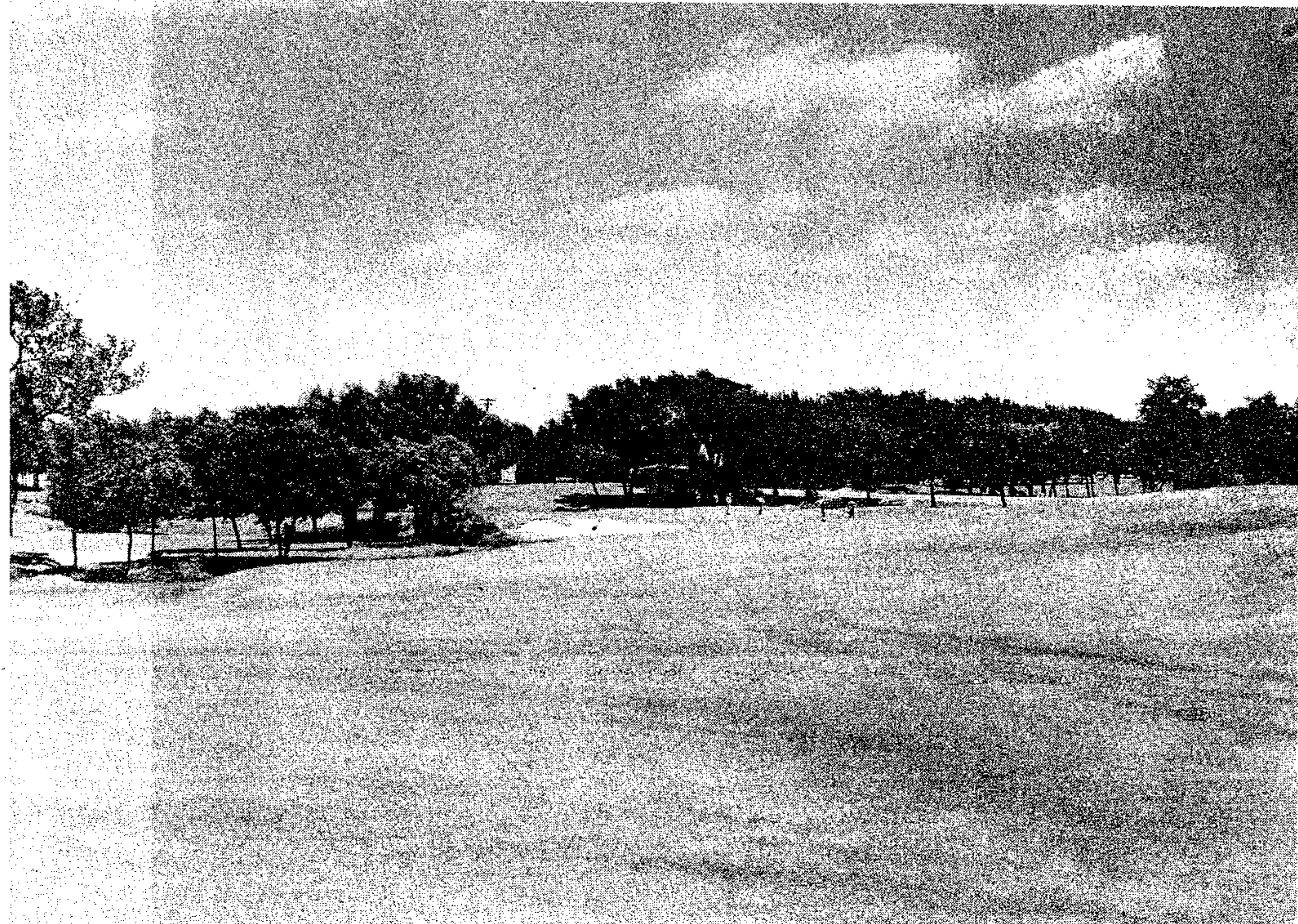
No. 8, 260 yards, par 4

Reward here for the brave boy who can bust a wood shot a block, but it is practically all carry, and he who presses and pushed, lands in a deep ditch. Professionals have been known to require four, chopping their way out but club members have been known to make holes-in-one.



No. 9, 388 yards, par 4

A blind hole off the tee, going up over a steep hill, out-of-bounds to the right, shrubbery, rough, fence to the left of the dogleg. The second shot has to be perfect to a big green just to the right of a creek, with a highway and out-of-bounds to the right.



No. 10, 417 yards, par 4

Probably the best par 4 on the course. Another shot up over a hill off the tee, out-of-bounds to the right, a roadway to the left. Trouble to throw away, along with the strokes, on the second. That creek again, short of the green and winding past the green at the left, with a giant cottonwood tree guarding the carpet, and a yawning trap gulping down the slightly inaccurate second shot.



No. 11, 205 yards, par 3

Another beauty, all carry into a well banked green beside slightly overhanging trees. That ever-present creek cut through the fairway and around to the left of the green. Trouble plenty for the timid or off line shot.



No. 12, 304 yards, par 4

This one can be heaven or hell. It is a decided dogleg that can be played the short way with a medium iron out to a flat and a short pitch to another green that is on the creek bank. Or the longer hitter can shoot for the green off the tee, but he falls into trees and water if he is short, or long to the left, and goes out of bounds if he is off line to the right. An easy par, an easier 5 and a hard birdie.





No. 13, 590 yards, par 5

The longest, most exasperating hole on the course. A crescent to the right, all the way. If either of your two woods is hooked it will cost a stroke. The green is in a pretty setting against tall trees with water to the right and rear.

No. 14, 408 yards, par 4

Up an inclined fairway to the brow of a hill, then tumbling down to a flat fairway with the green across a ditch near the highway. A drive and a short pitch with a south wind, a whale of a tee shot and another wood against a north wind.



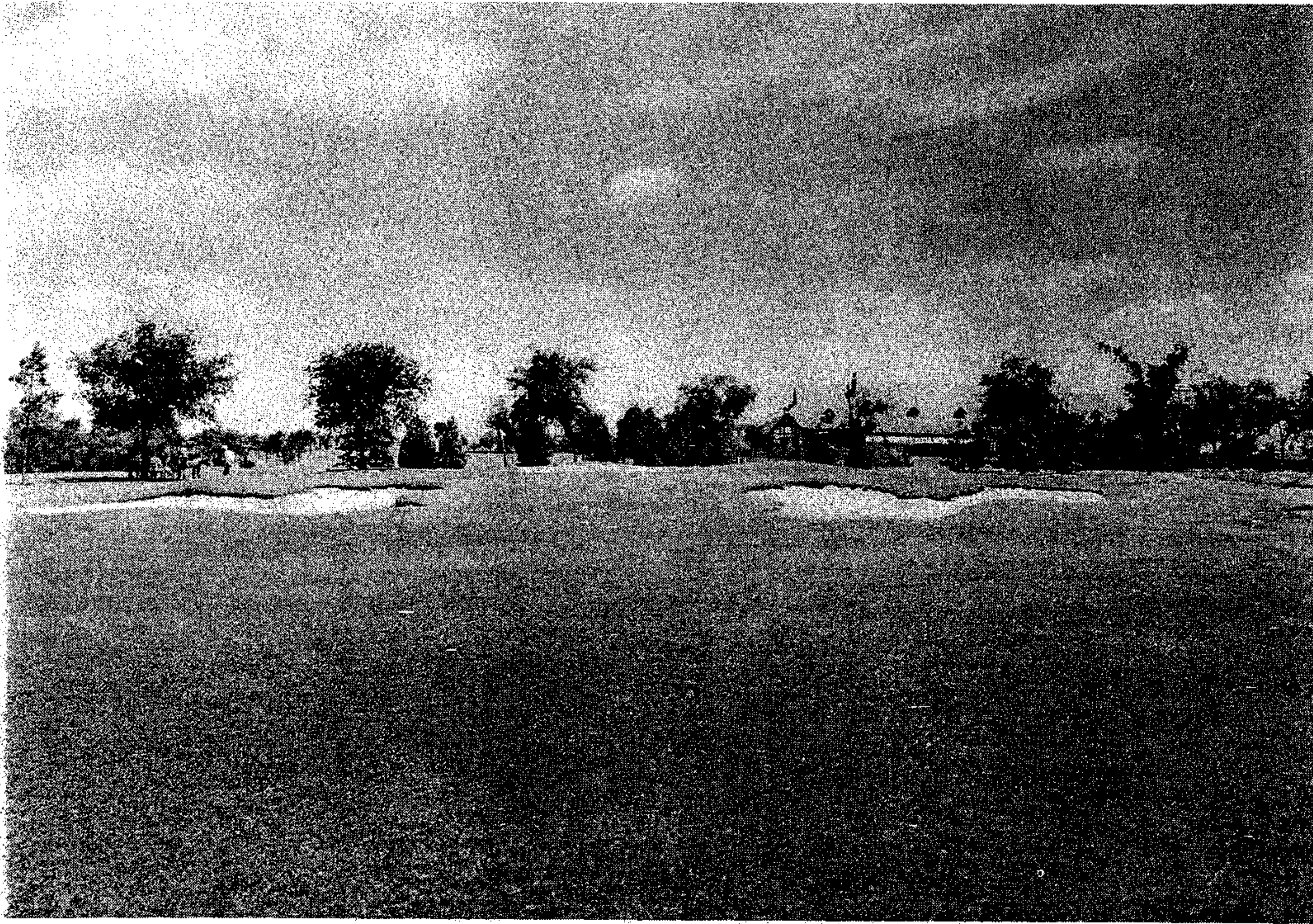
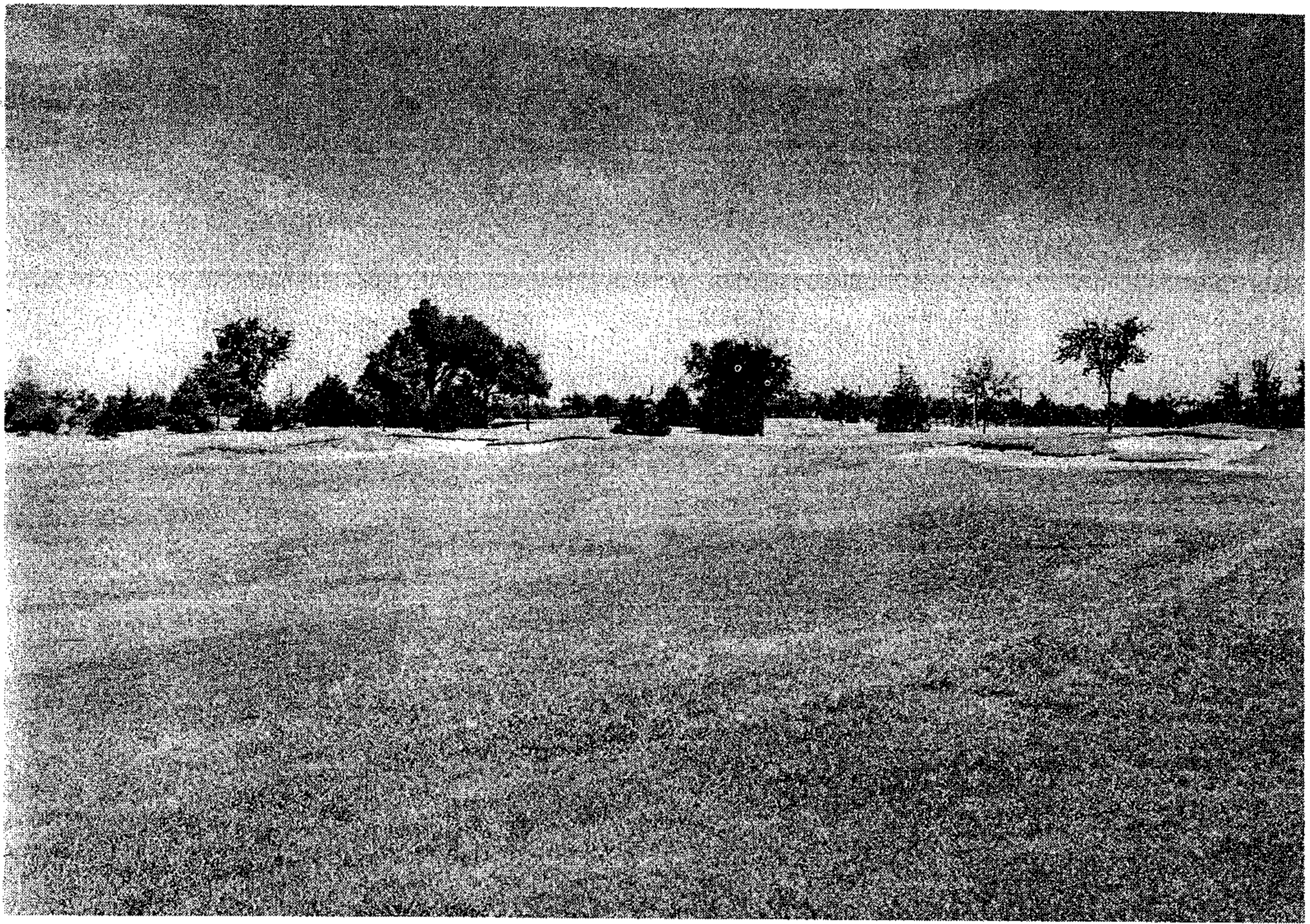
No. 15, 126 yards, par 3

It's all in the accuracy on this one, test the wind before shooting — can be anything from a 5 to a 9 iron. Well trapped, but a good birdie hole.

1939

No. 16, 445 yards, par 4

A good hole down the stretch in a tight match. A rolling fairway and a large green. Well trapped to catch either the slightly hooked or sliced long second.



No. 17, 367 yards, par 4

Sounds easy but there is trouble in "Jeter's Gulch" to the left off the tee, and the green with a tight entrance is so shaped that only the shot with a bucketful of stick-'em will bite in close for a birdie putt.

No. 18, 392 yards, par 4

A fine but not exceedingly difficult finishing hole, the trick being to land near the cup on a large, elevated green. Easy to three-putt by the tired, jittery player.

