



18

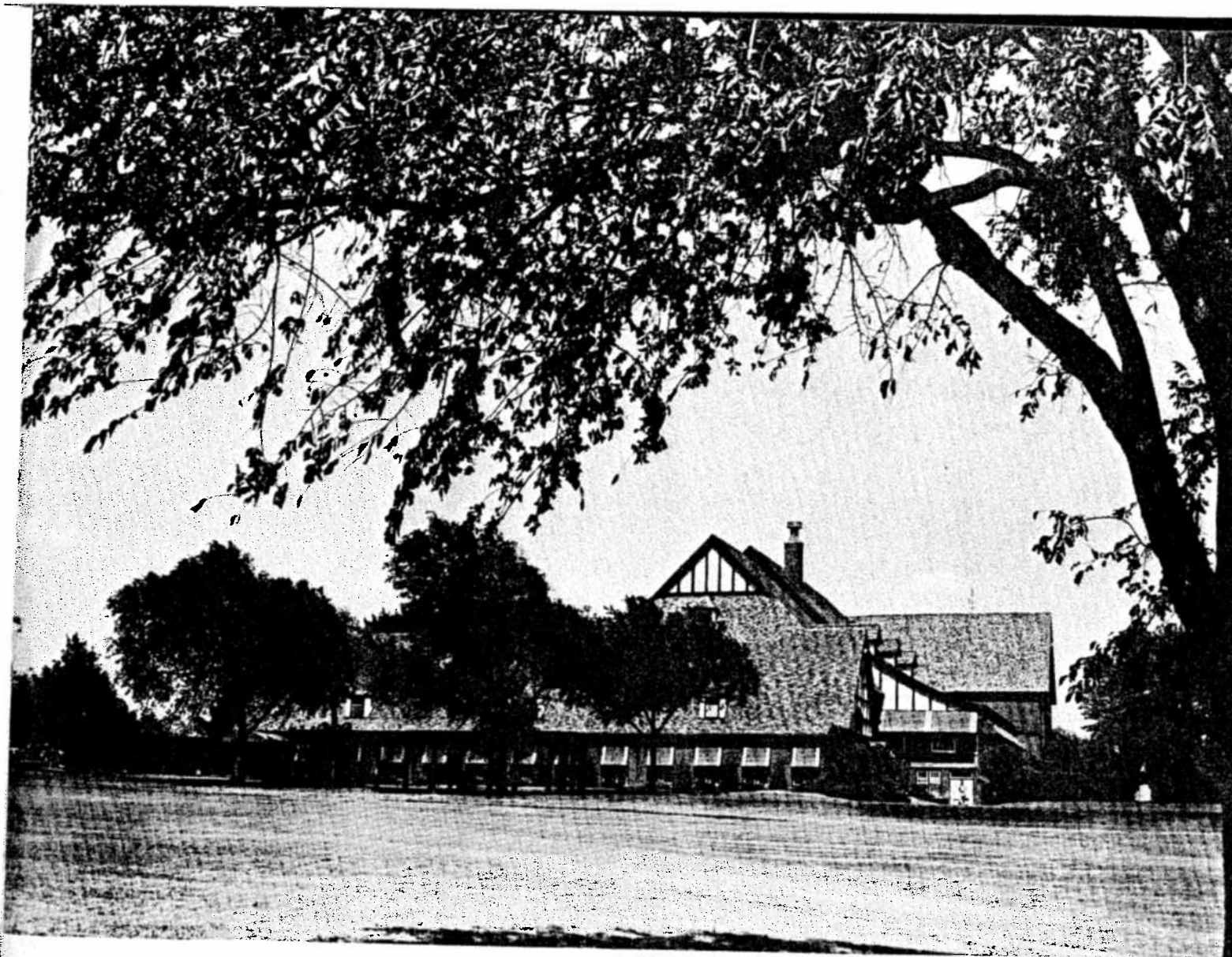
53rd AMATEUR CHAMPIONSHIP
of the UNITED STATES GOLF ASSOCIATION
Oklahoma City Golf & Country Club
OKLAHOMA CITY, OKLAHOMA
SEPTEMBER 14-19, 1953

Program
50c



"Double Trouble"

Dulaney's Manufacturers & Distributors

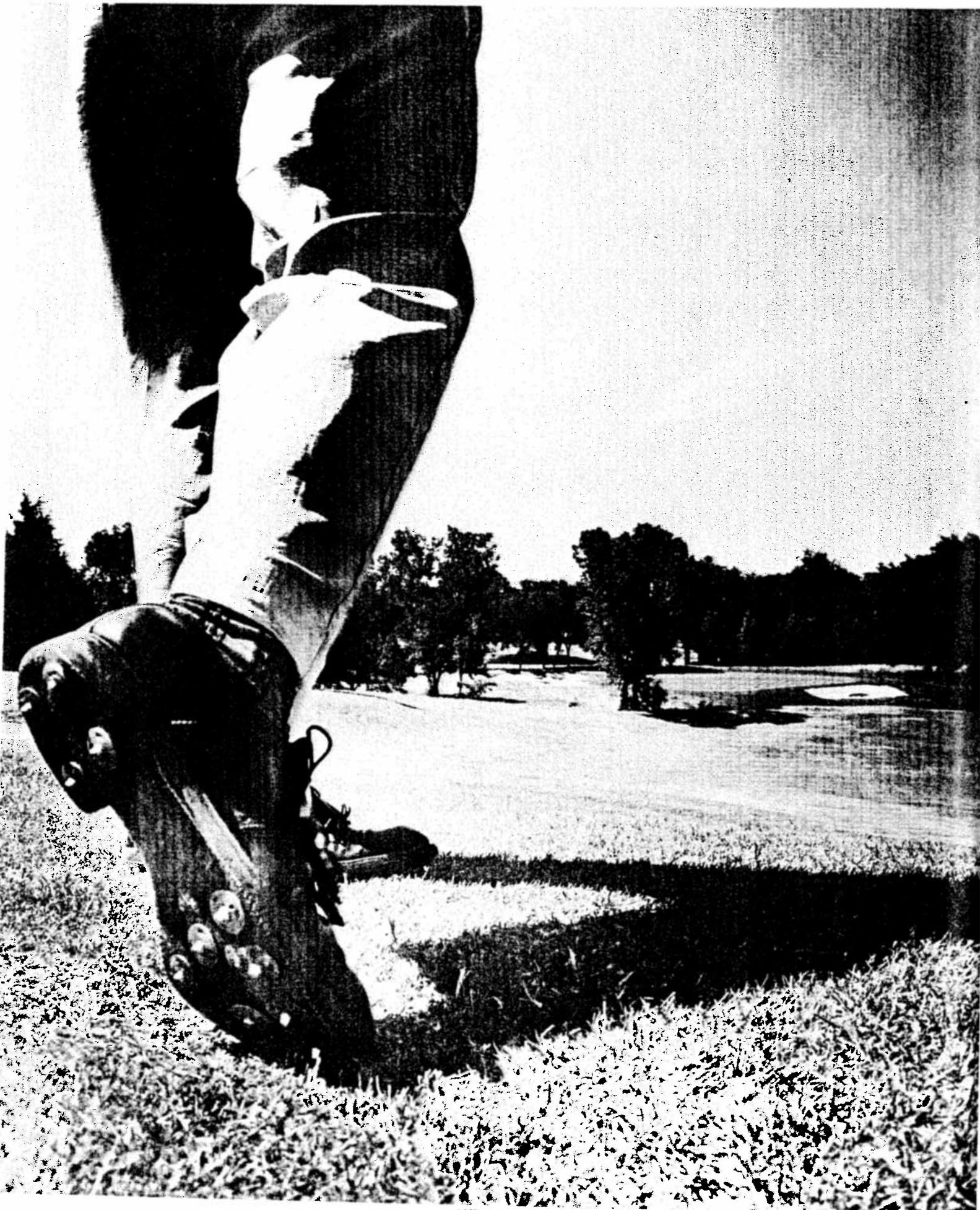


A view of the Clubhouse

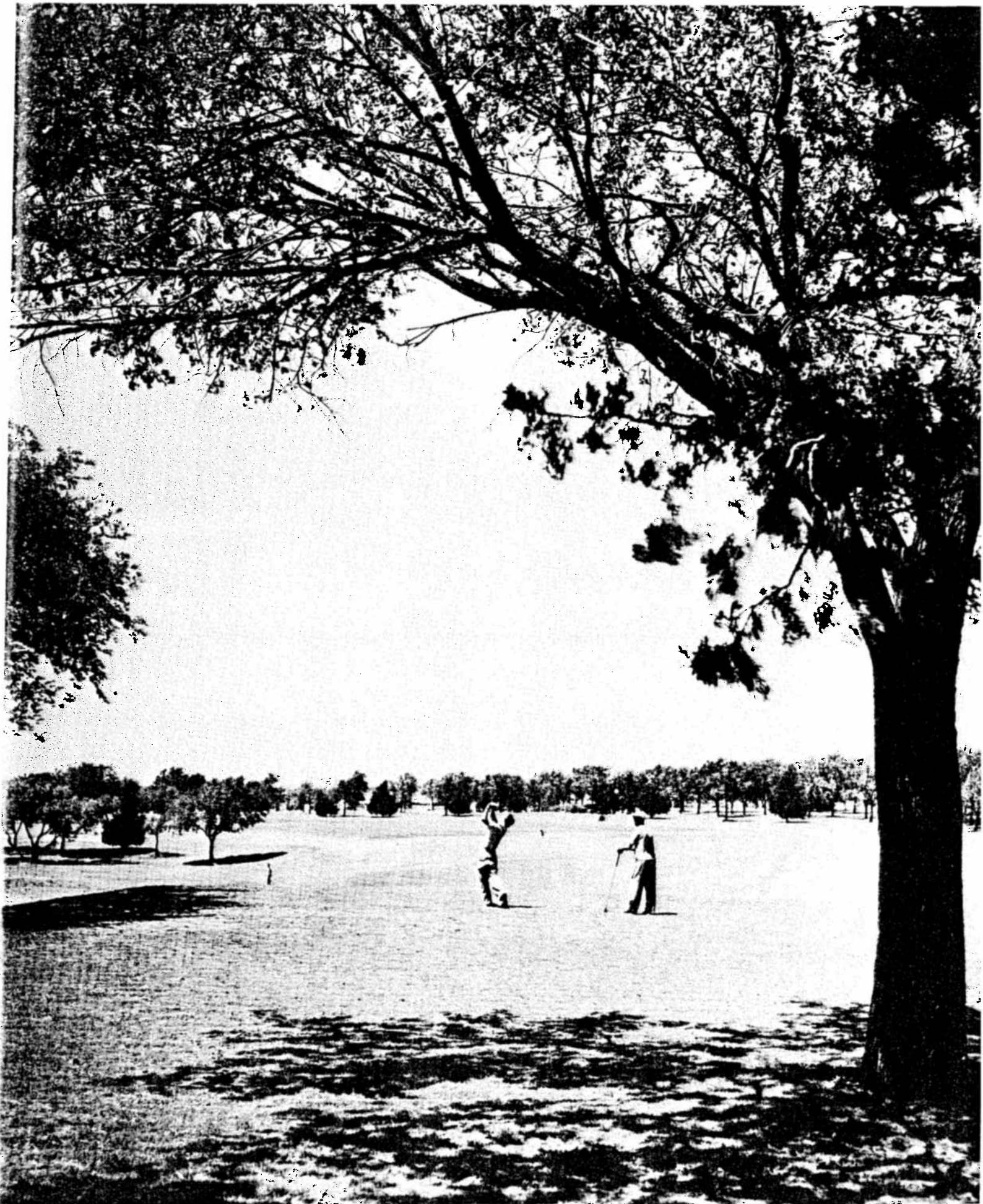
CONTENTS

	<i>Page</i>		
Letter from President Dwight D. Eisenhower.....	2	Description of the Course (<i>with detailed</i>	
Letters from Officials.....	6 and 7	<i>photo-sketches</i>).....	38-46
Letter from Governor Johnston Murray.....	8	The Course Through the Eyes of a Former	
Letter from Mayor Allen Street.....	8	Champion, <i>by</i> Charley Coe.....	47
Oklahoma City is one of the Nation's Ranking		One Break in 1930 Amateur Championship Made	
Golf Hotbeds, <i>by</i> John Cronley.....	9	Possible Completion of Bobby Jones's	
Harrison Smith and the Oklahoma City Golf		"Grand Slam," <i>by</i> Bobby Jones.....	51
& Country Club <i>by</i> Bill English.....	10	Suggestions to Spectators.....	55
The USGA, <i>by</i> Totton P. Heffelfinger.....	12	Detroit Country Club, Site of 1954	
53rd Amateur Championship has flavor of		Amateur Championship.....	57
Keen International Competition, <i>by</i> Wally Wallis.....	15	Results of the 1952 Amateur Championship.....	58-61
Official Records of the Amateur Championship.....	17	Oklahoma City Golf & Country Club,	
Highlights of the First 52 Championships.....	19-25	Professional and Staff.....	65
Oklahoma City, Oklahoma.....	26-34	Rules Governing the 53rd Amateur Championship.....	69
Tournament Committees.....	35	Oklahoma City Golf & Country Club's	
Oklahoma City Golf & Country Club from the Air		Golf Course Superintendent.....	66
(<i>photograph</i>).....	36-37		

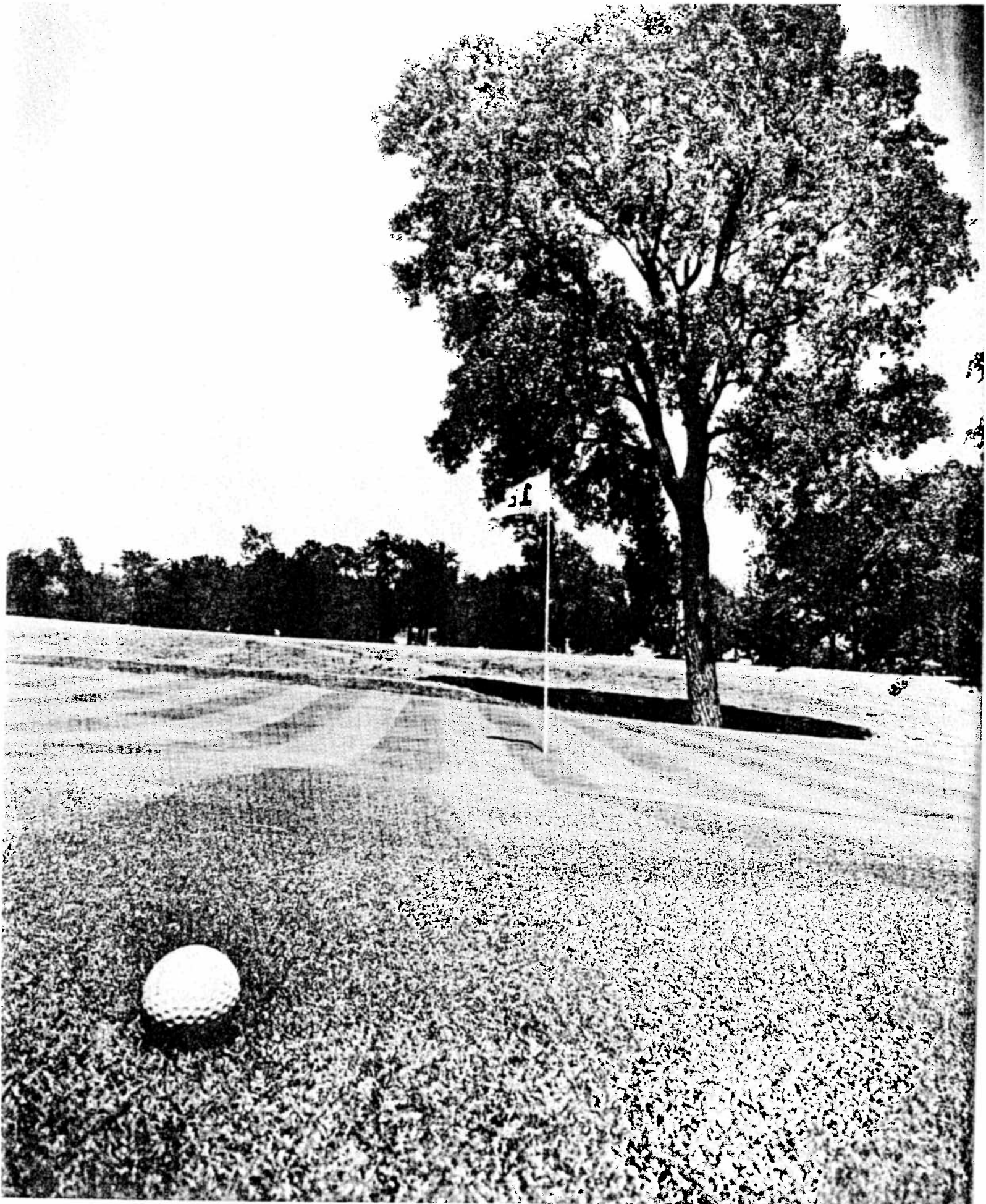
THE COVER: Kent B. Hayes, *President of the Oklahoma City Golf & Country Club*, Harrison M. Smith, *General Chairman of the Tournament Committees*, and Charley Coe, *the Club's 1949 Amateur Champion*



"Fore!"



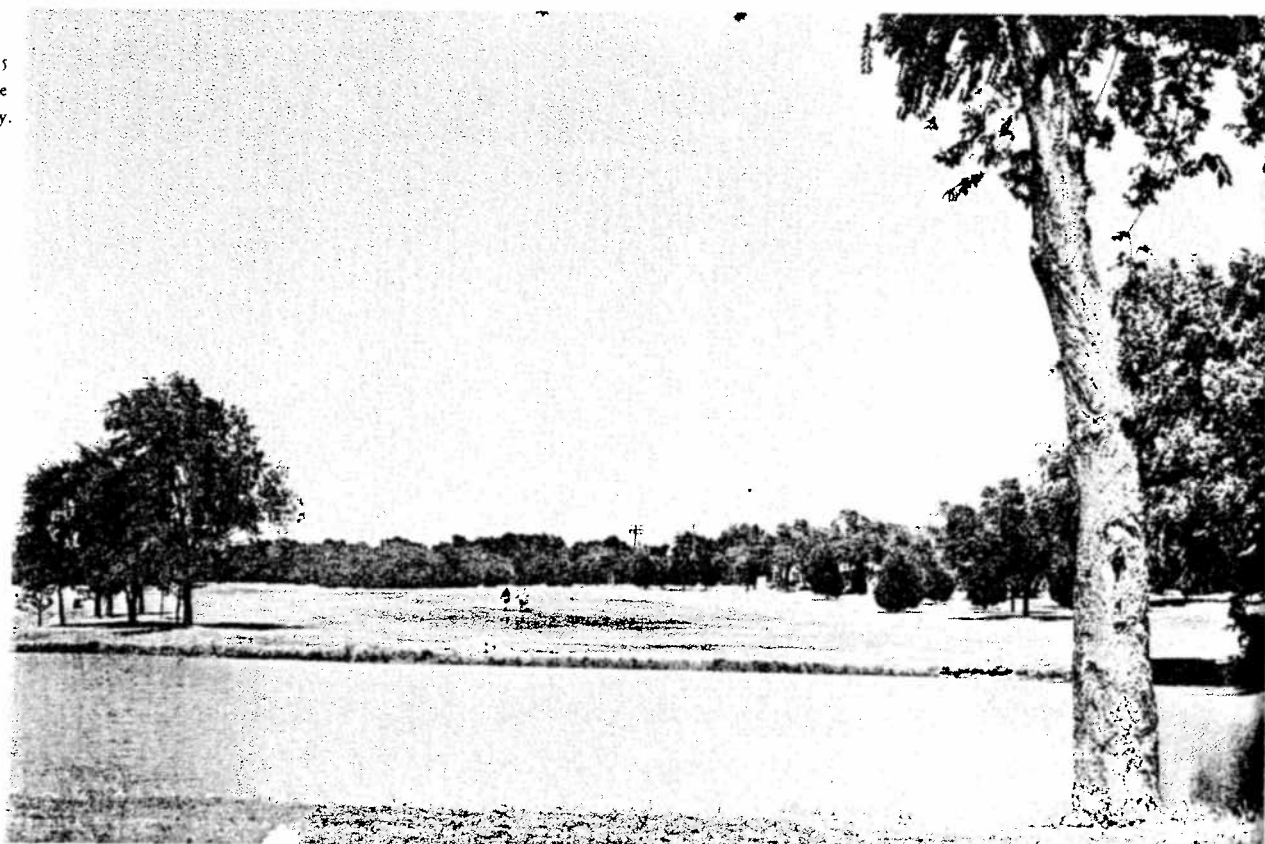
Teeing off on No. 1
Sponsored by Oklahoma Natural Gas Co.



A BALL ON NO. 12 GREEN



Above, an overall view of No. 15
and (right) No. 16 tee
and fairway.

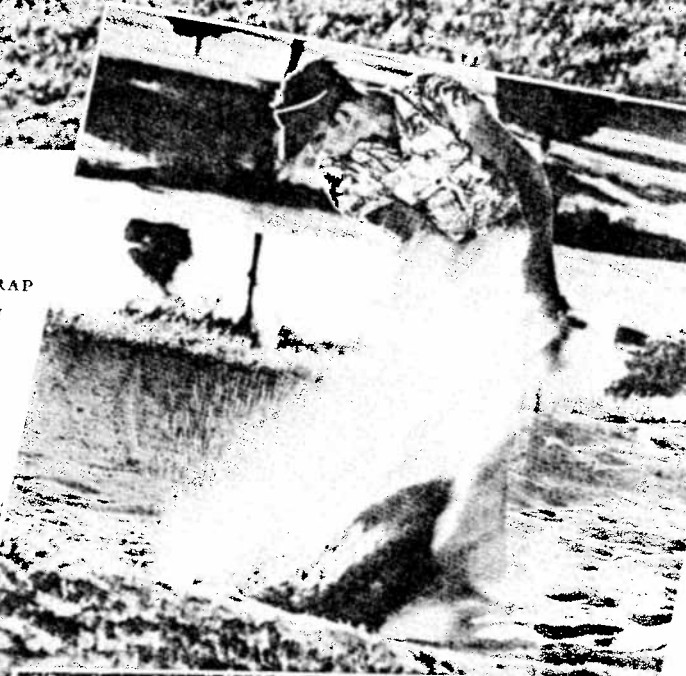




A GOLF BUGGY ON NO. 11 FAIRWAY

**SCENES ON
THE GOLF COURSE**

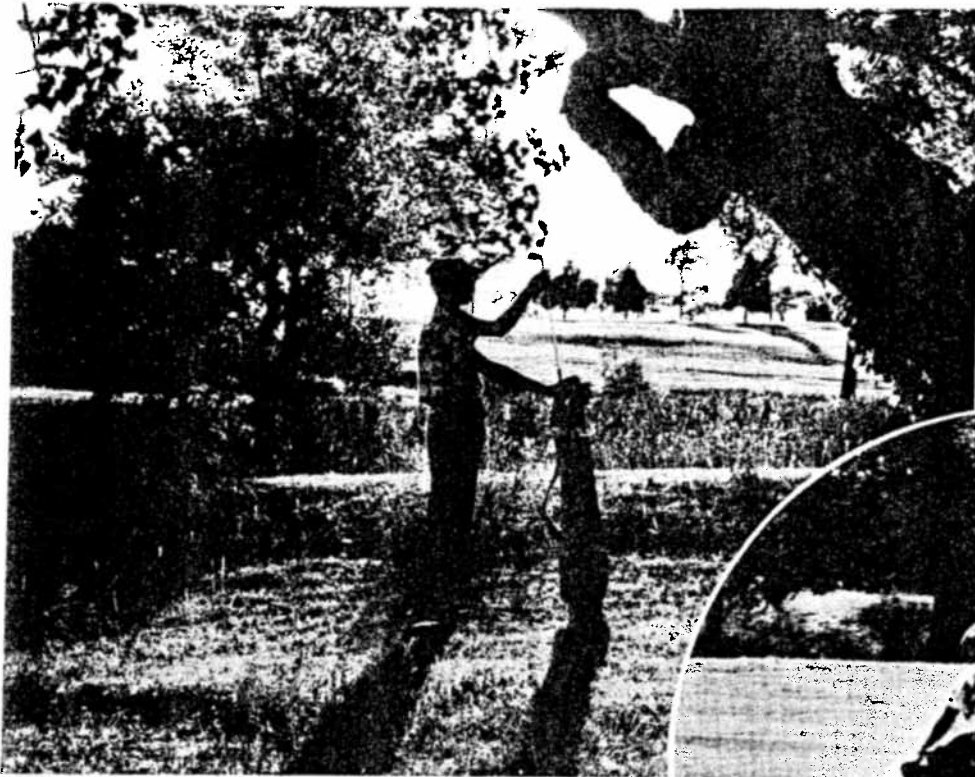
PLAYING FROM A TRAP
ON NO. 2 GREEN



NO. 3 TEE AS SEEN FROM ROUGH ACROSS THE LAKE



NO. 2 GREEN IN THE BACKGROUND

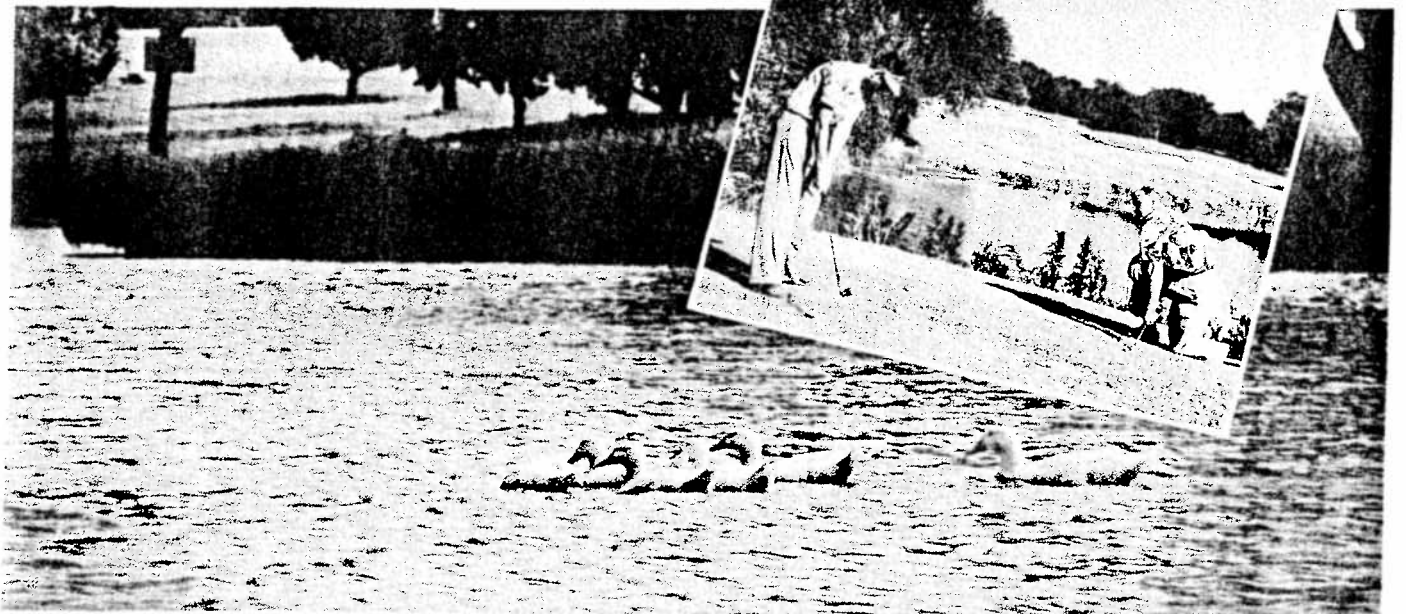


DEEP IN THE ROUGH ON NO. 2 ACROSS
THE LAKE FROM NO. 5 FAIRWAY



WALKING ACROSS NO. 13 FAIRWAY

TEEING OFF ACROSS THE LAKE ON NO. 3



WHITE DUCKS MAKE A SERENE PICTURE ON ONE OF THE LAKES

I
SEPTEM
THE 53rd AMATEUR CHA
H

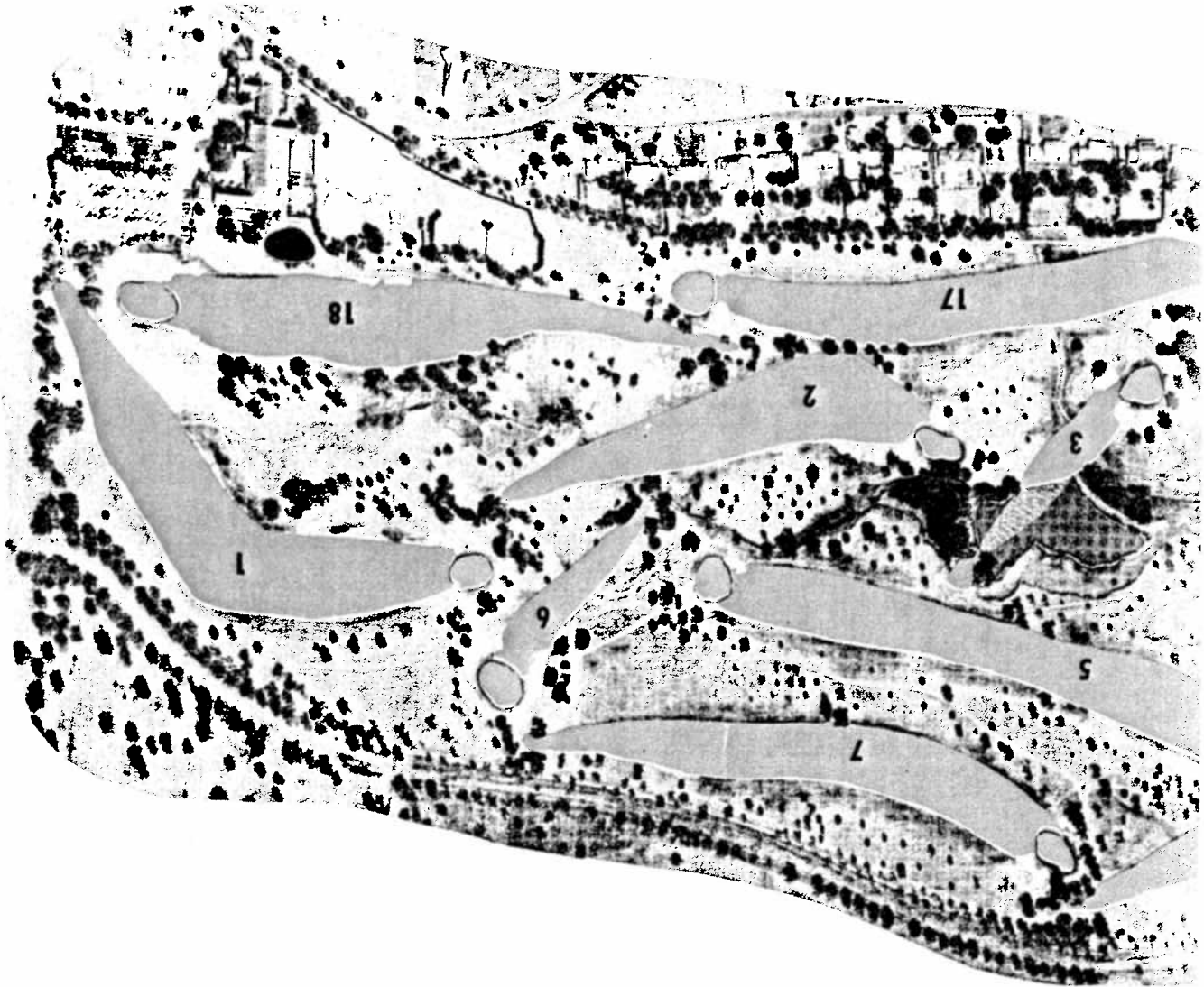


THE OKLA
GOLF AND C

MR 14-19

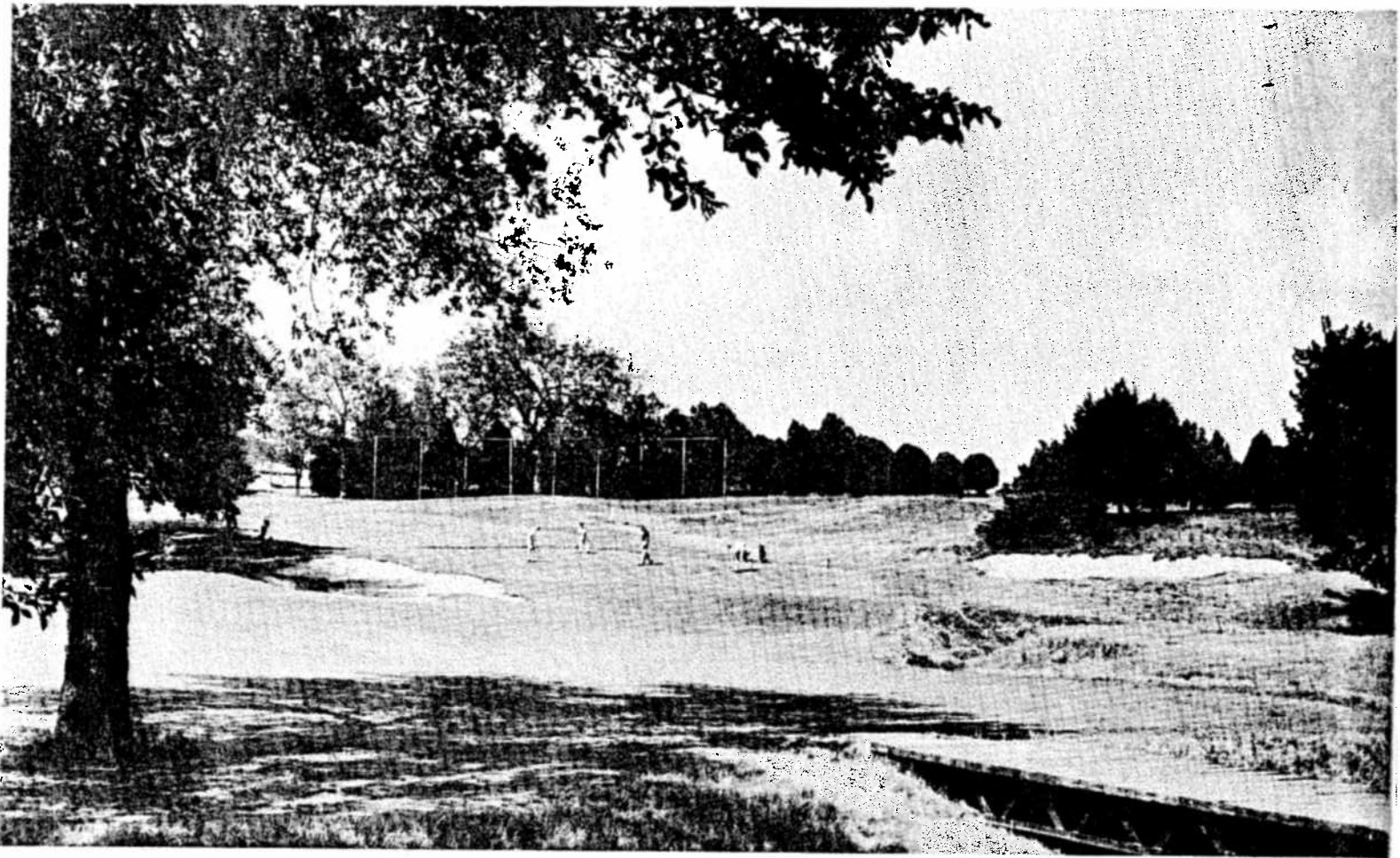
PIONSHIP OF THE USGA

to

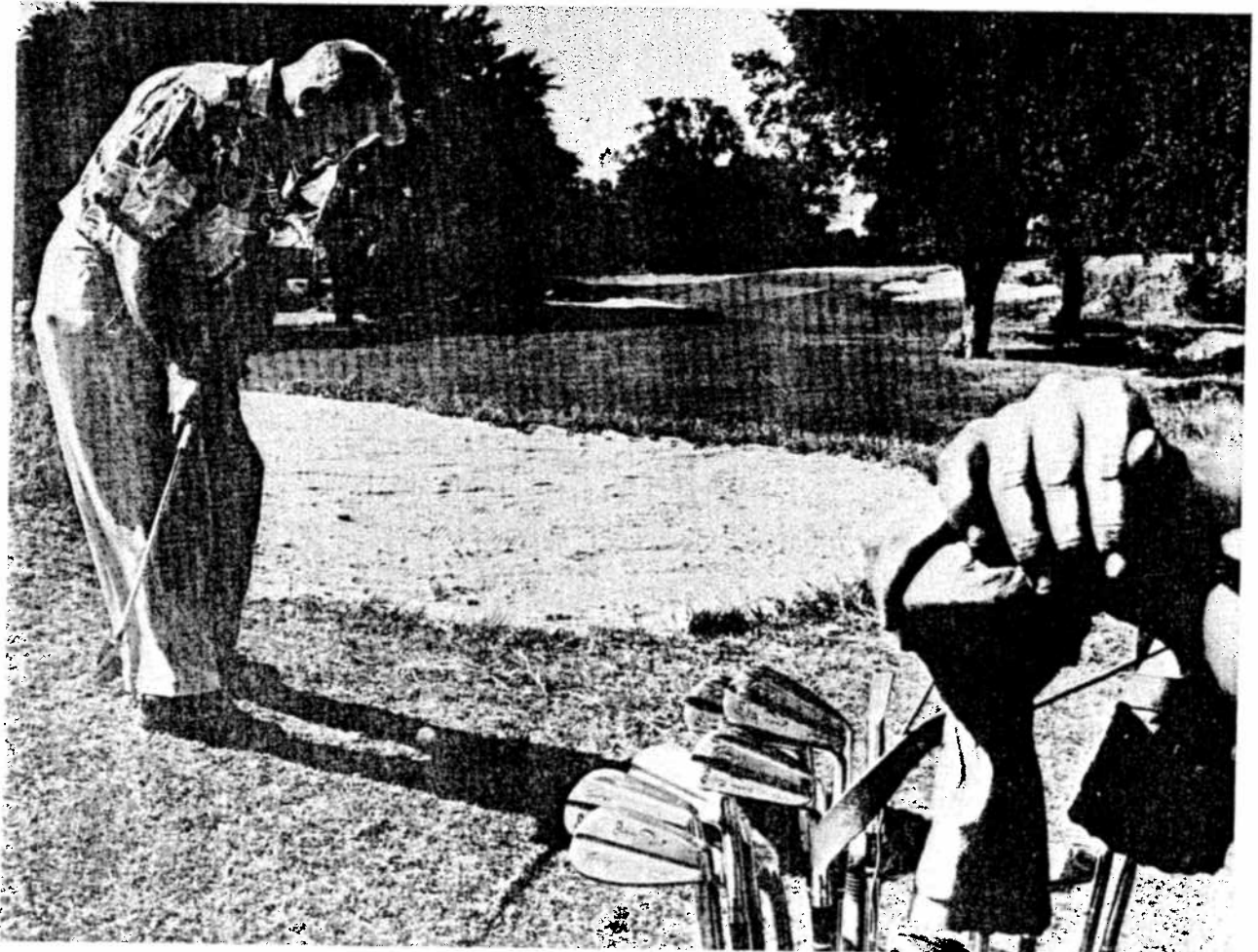


UNTRY CLUB

IOMA CITY

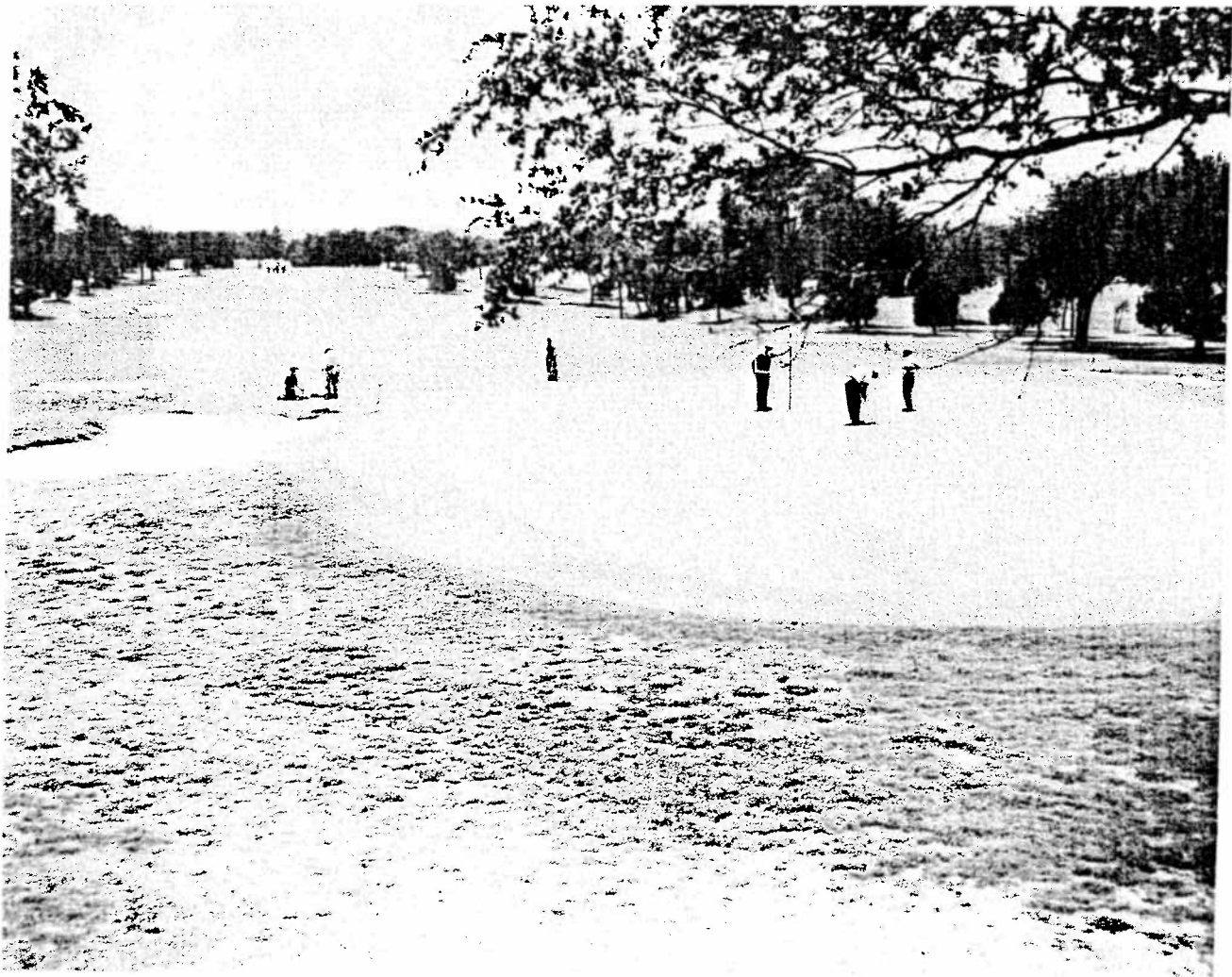


Above, an overall view of No. 13 green and (right) approaching No. 14.



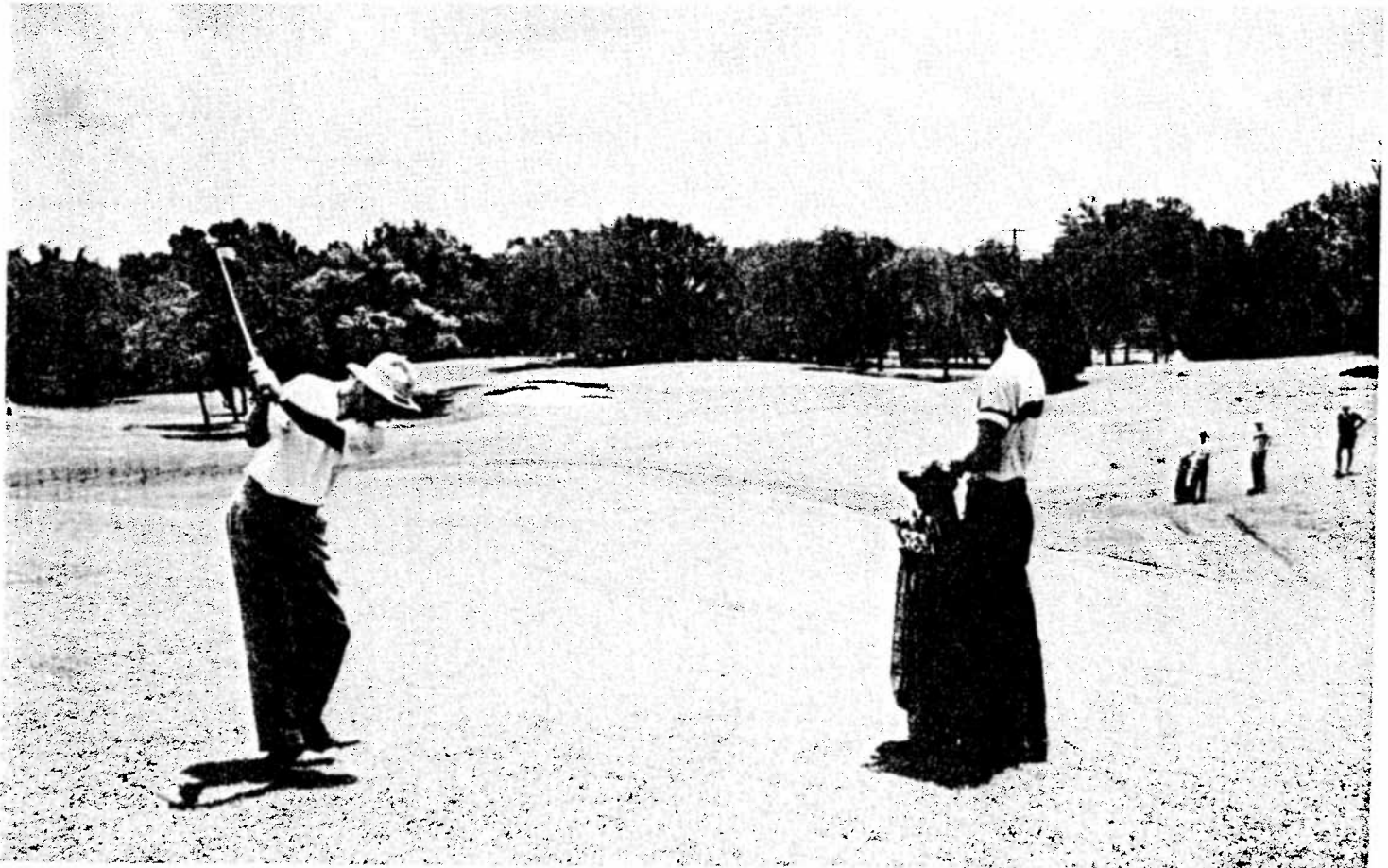


Above, playing to No. 17 green and (below) putting on No. 18.





Above, playing a second shot on No. 8 and (below) a second shot to No. 9.



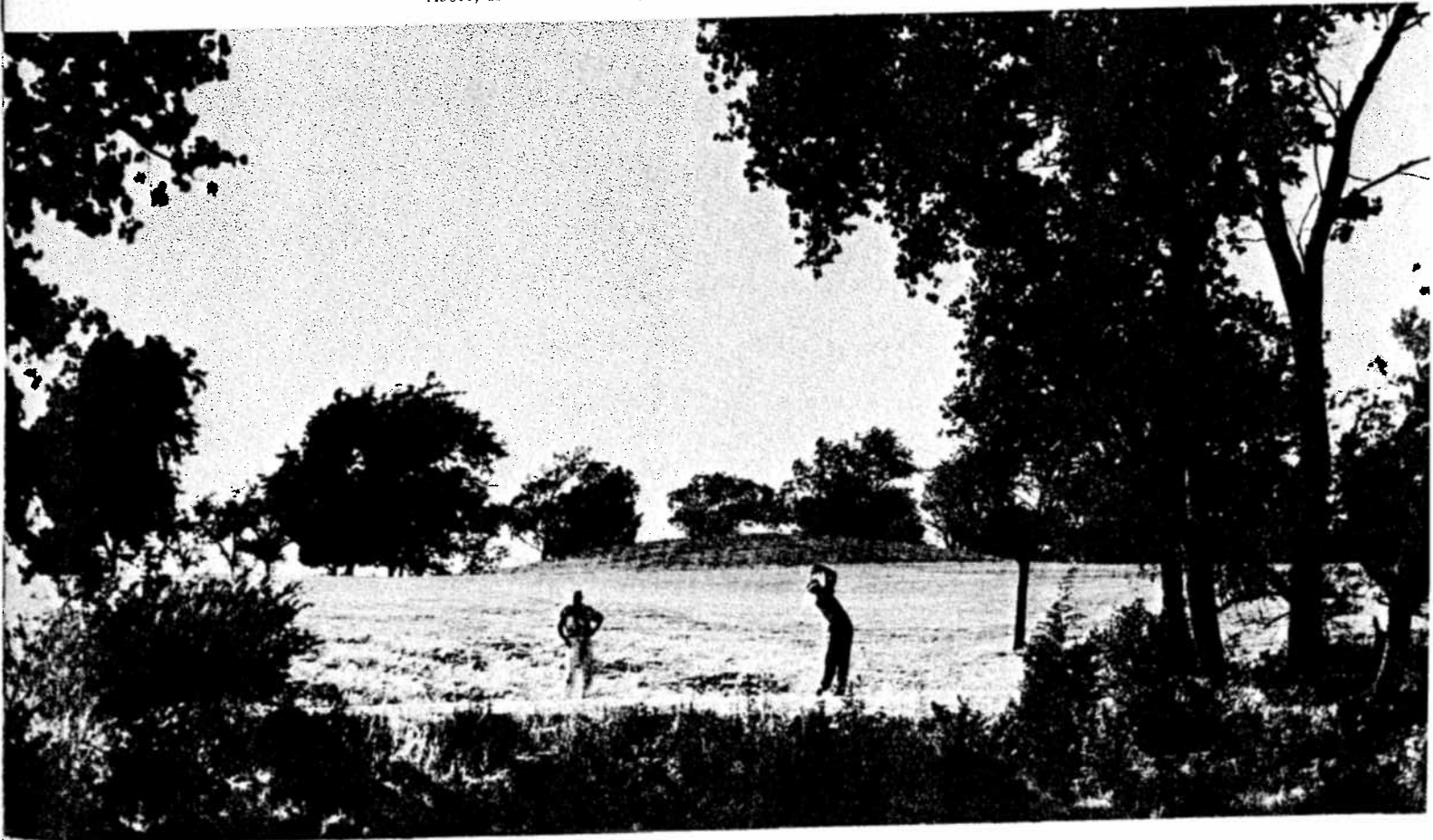


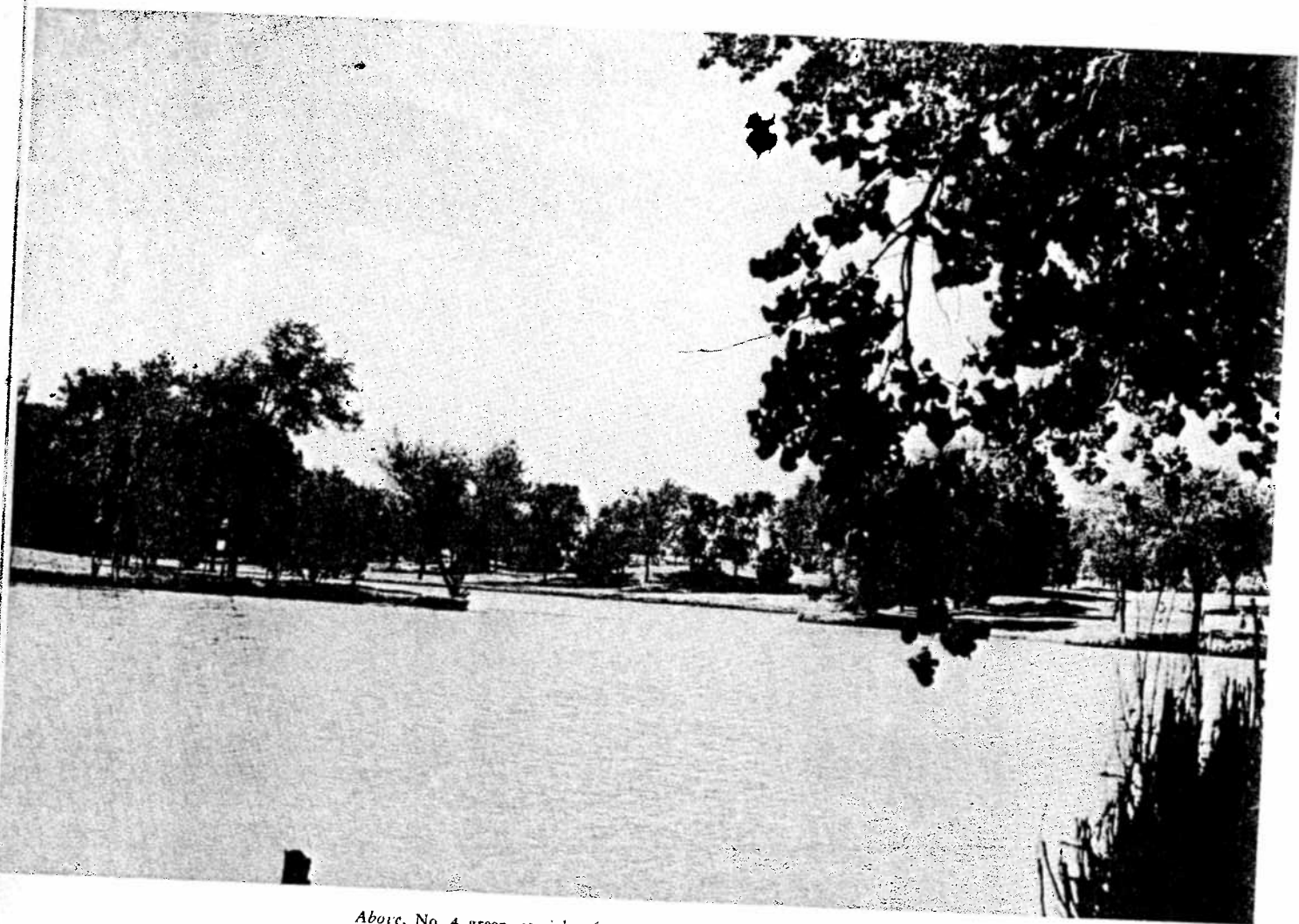
Above, hitting from a trap on No. 10 and (below) approaching No. 11.





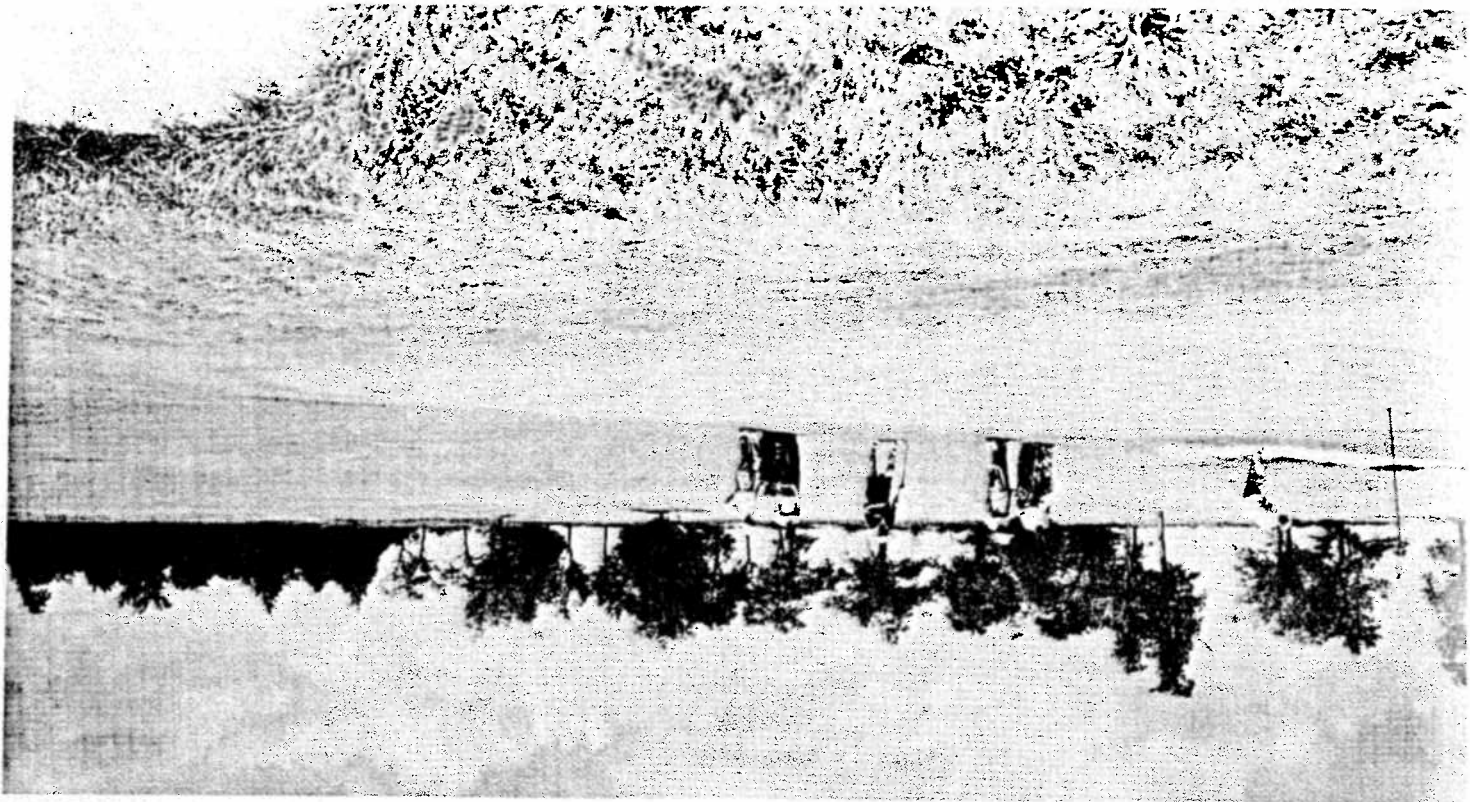
Above, A view of No. 2 green and (below) driving from No. 3 tee.



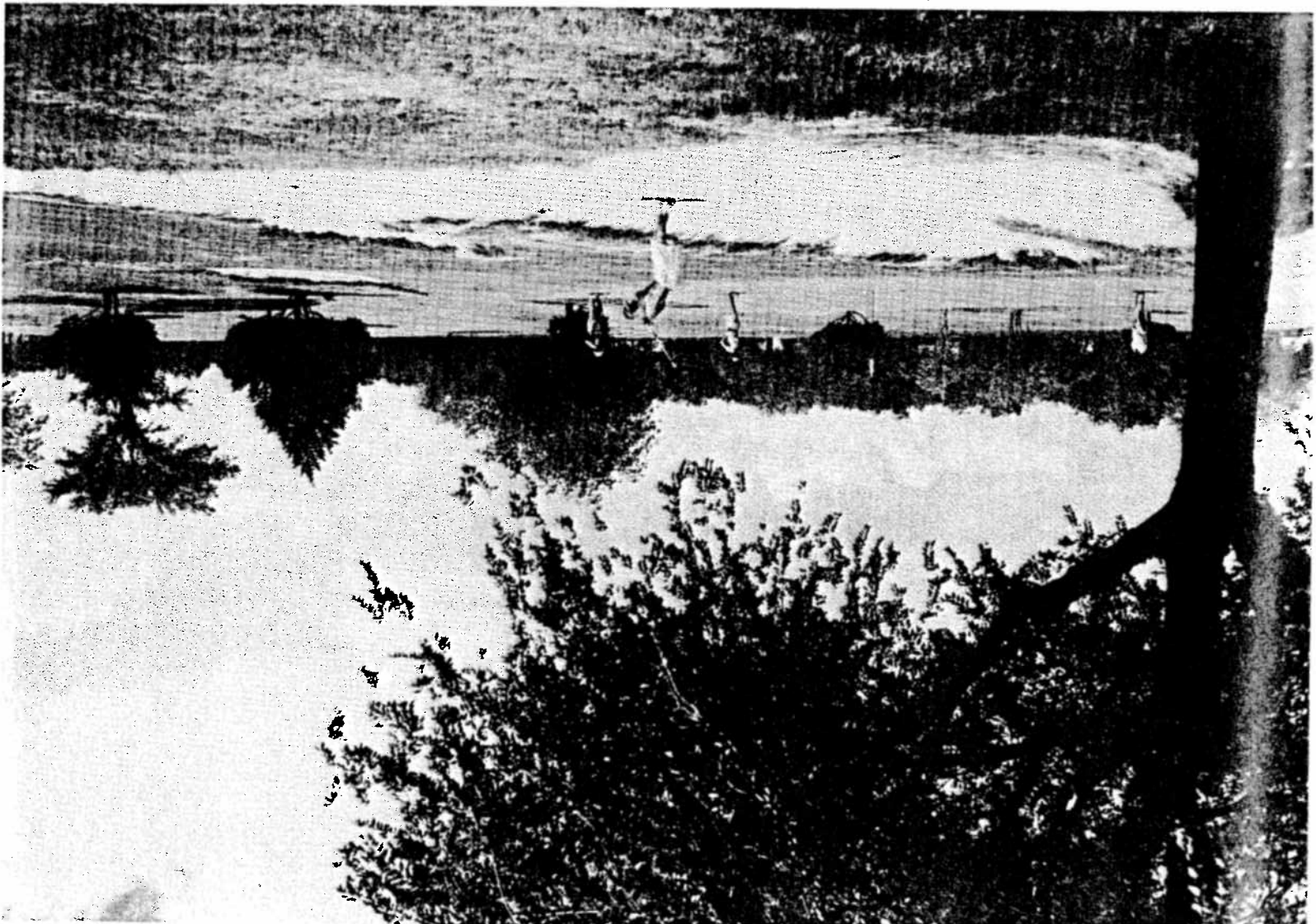


Above, No. 4 green, at right, from across the lake and (below) approaching No. 5.



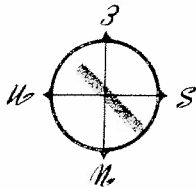
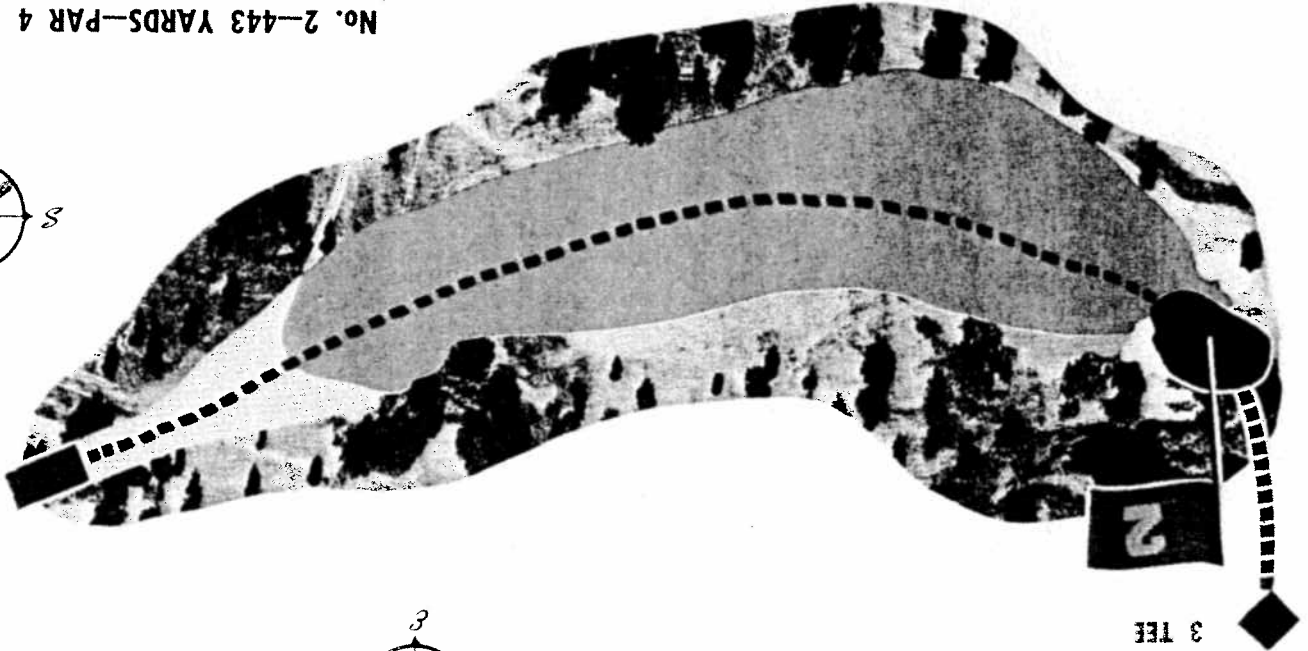
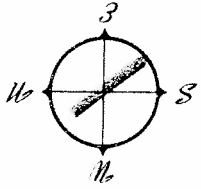


Above, playing from No. 6 trap and (below) a close-up view of No. 7 green.



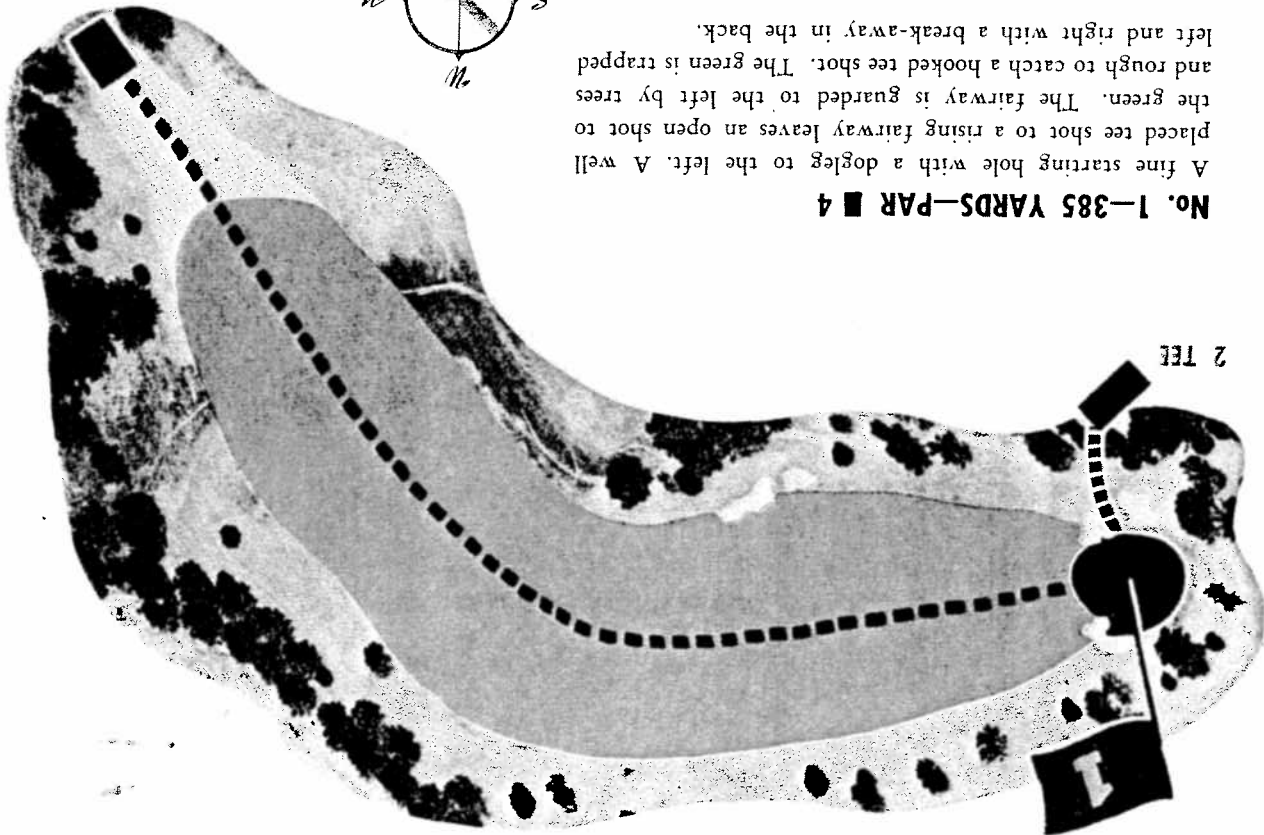
This can be a tough hole if the tee shot is not played to the left side of a table top fairway. This will leave an open shot to the green which slopes away. The green is trapped both left and right with the lake catching a faded approach shot.

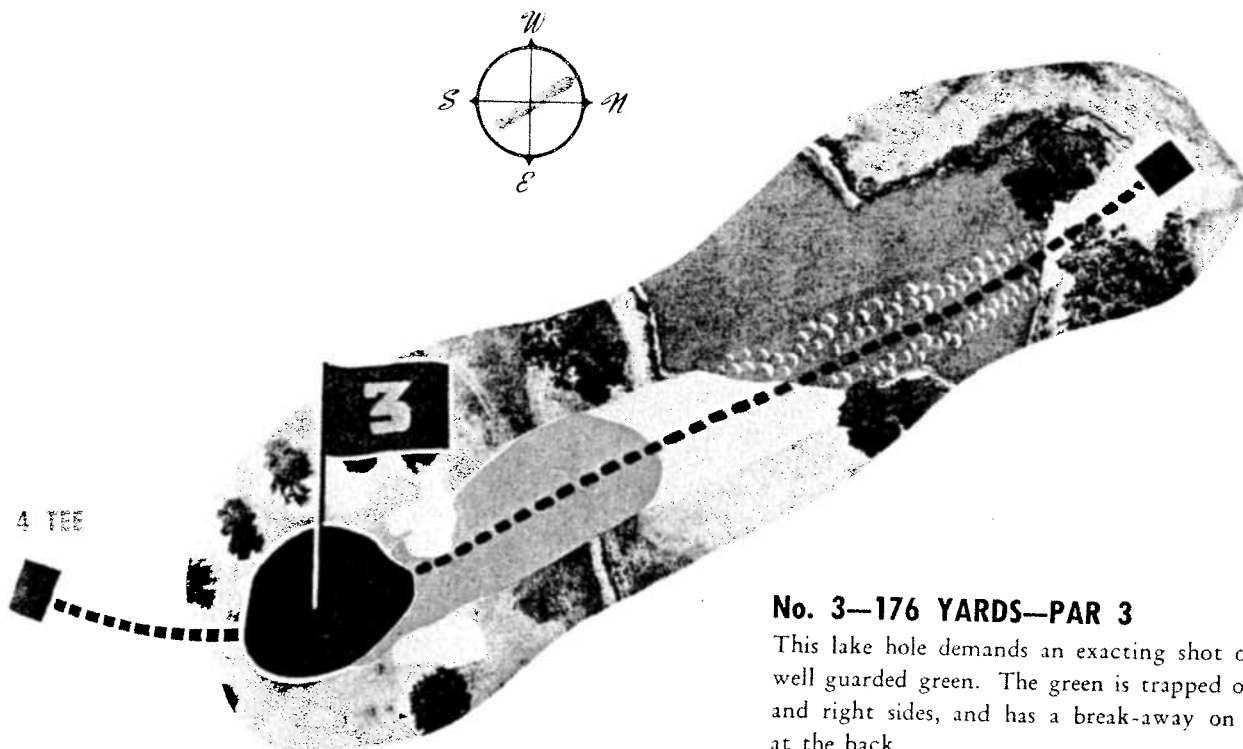
No. 2-443 YARDS-PAR 4



A fine starting hole with a dogleg to the left. A well placed tee shot to a rising fairway leaves an open shot to the green. The fairway is guarded to the left by trees and rough to catch a hooked tee shot. The green is trapped left and right with a break-away in the back.

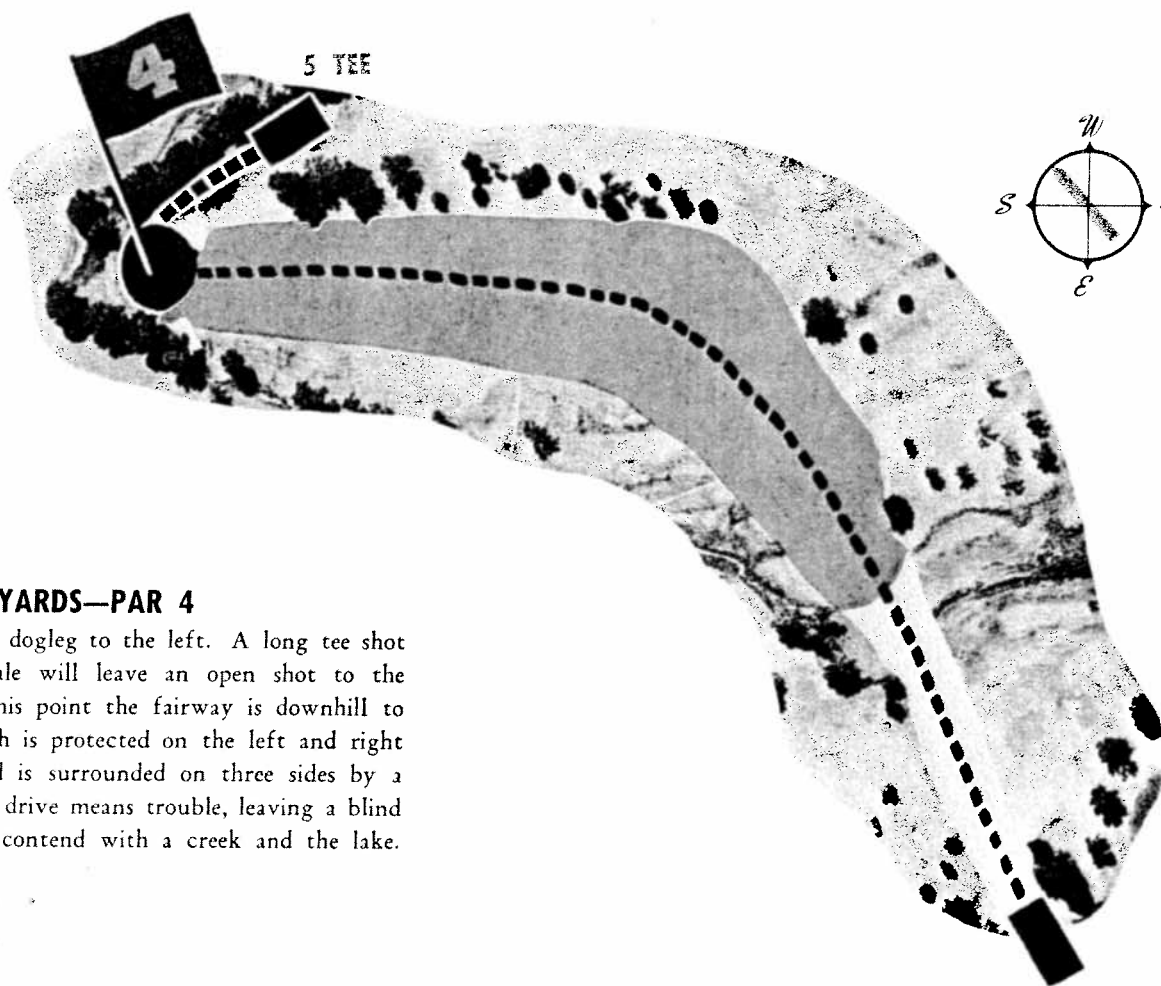
No. 1-385 YARDS-PAR 4





No. 3—176 YARDS—PAR 3

This lake hole demands an exacting shot over water to a well guarded green. The green is trapped on both the left and right sides, and has a break-away on both sides and at the back.

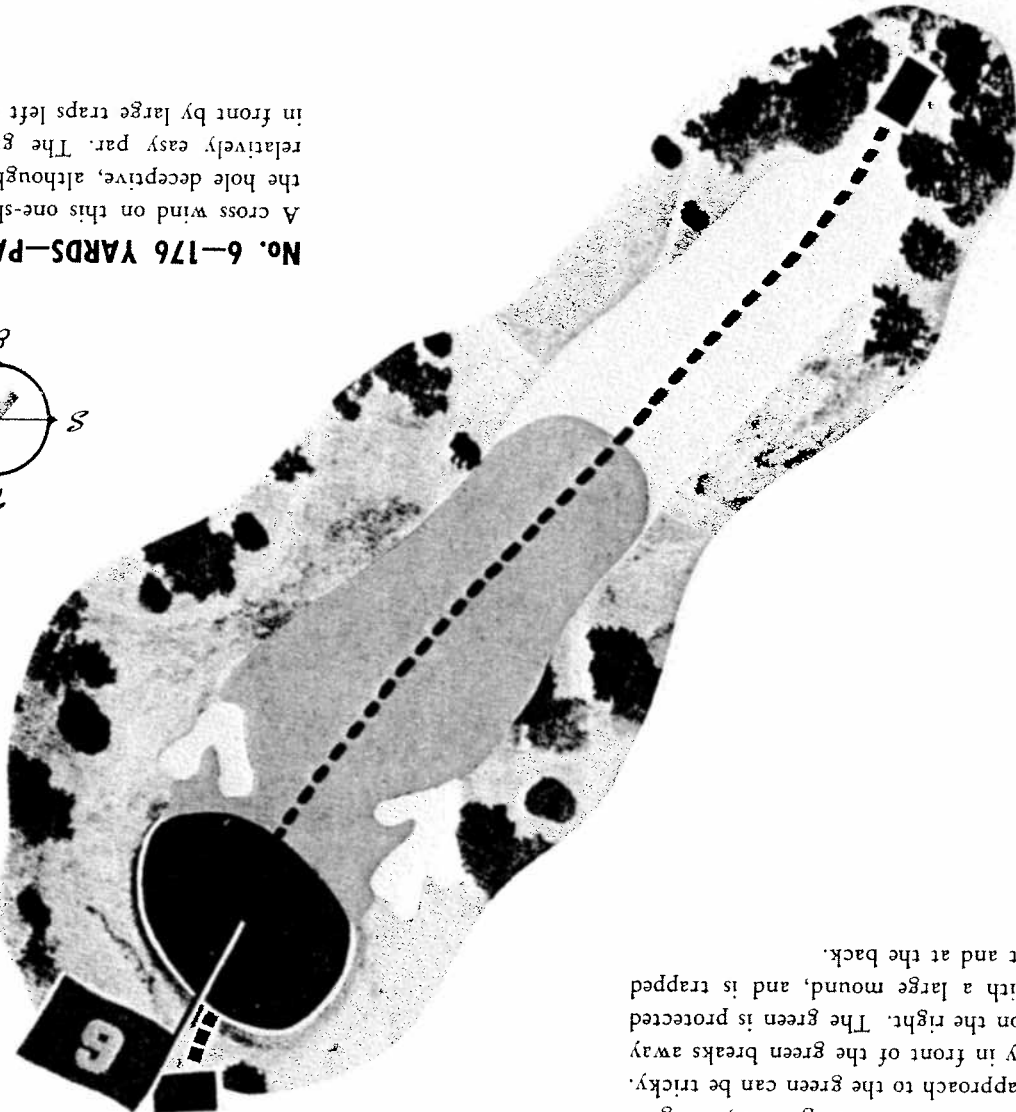
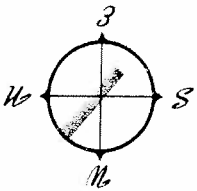


No. 4—447 YARDS—PAR 4

This is a sharp dogleg to the left. A long tee shot carrying a swale will leave an open shot to the green. From this point the fairway is downhill to the green which is protected on the left and right with traps, and is surrounded on three sides by a lake. A hooked drive means trouble, leaving a blind second shot to contend with a creek and the lake.

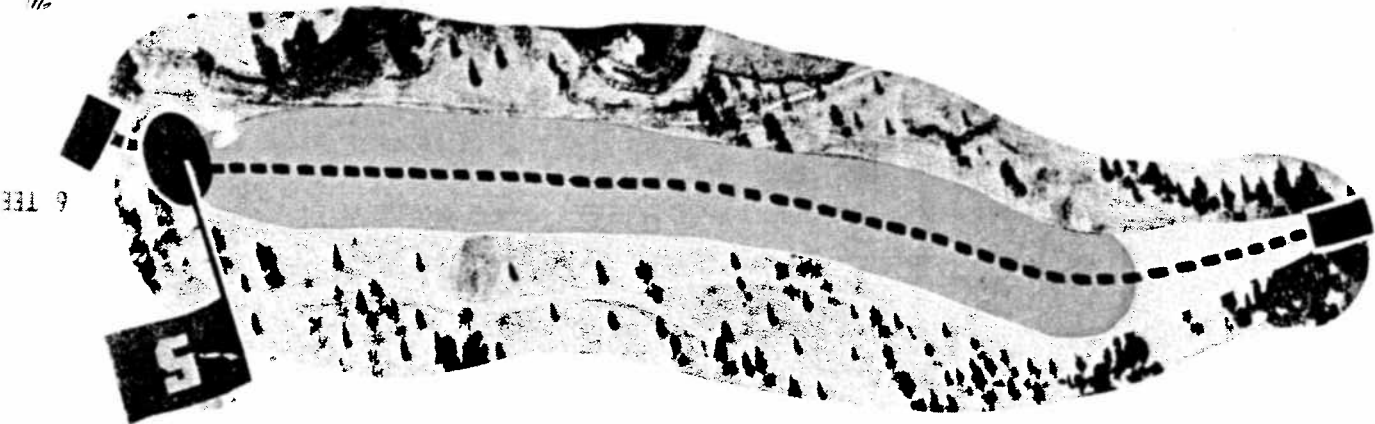
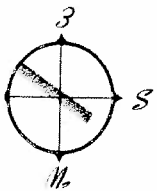
A cross wind on this one-shooter can make the hole deceptive, although it should be a relatively easy part. The green is guarded in front by large traps left and right.

No. 6-176 YARDS-PAR 3



The tee shot is blind over a slight rise, straight-away. The approach to the green can be tricky. The fairway in front of the green breaks away to a creek on the right. The green is protected in front with a large mound, and is trapped on the right and at the back.

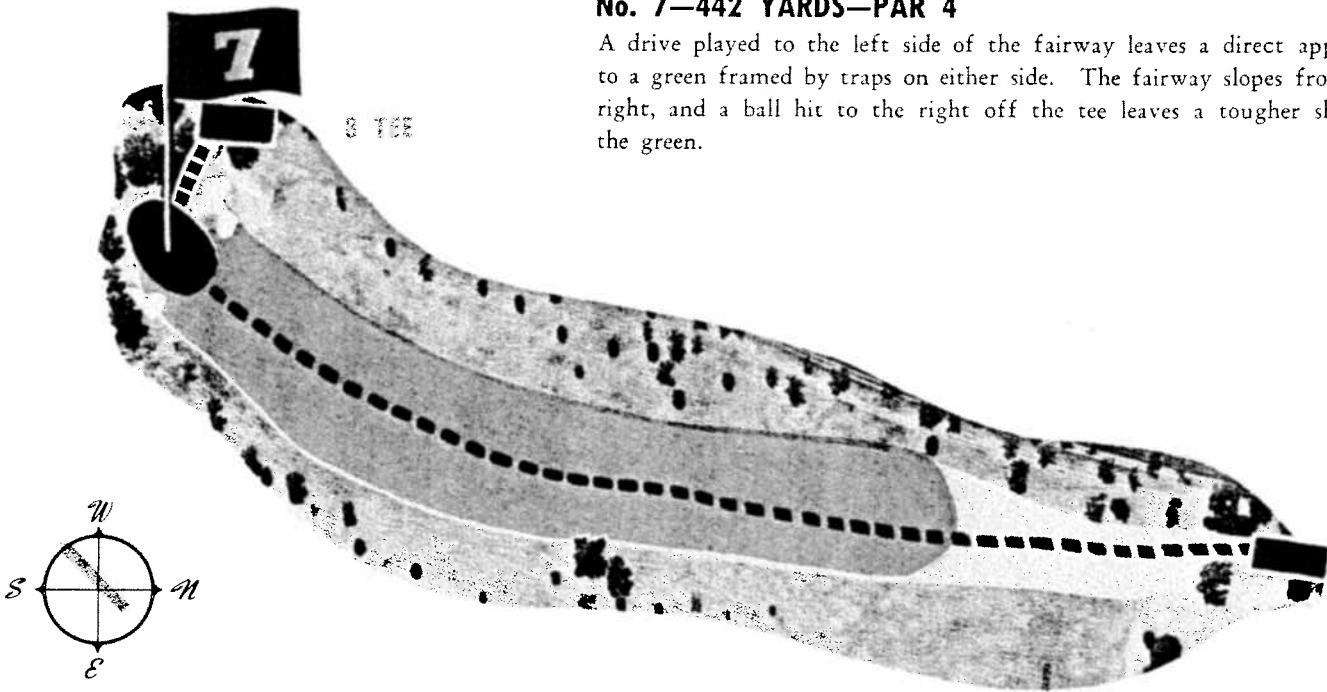
No. 5-576 YARDS-PAR 5



6 TEE

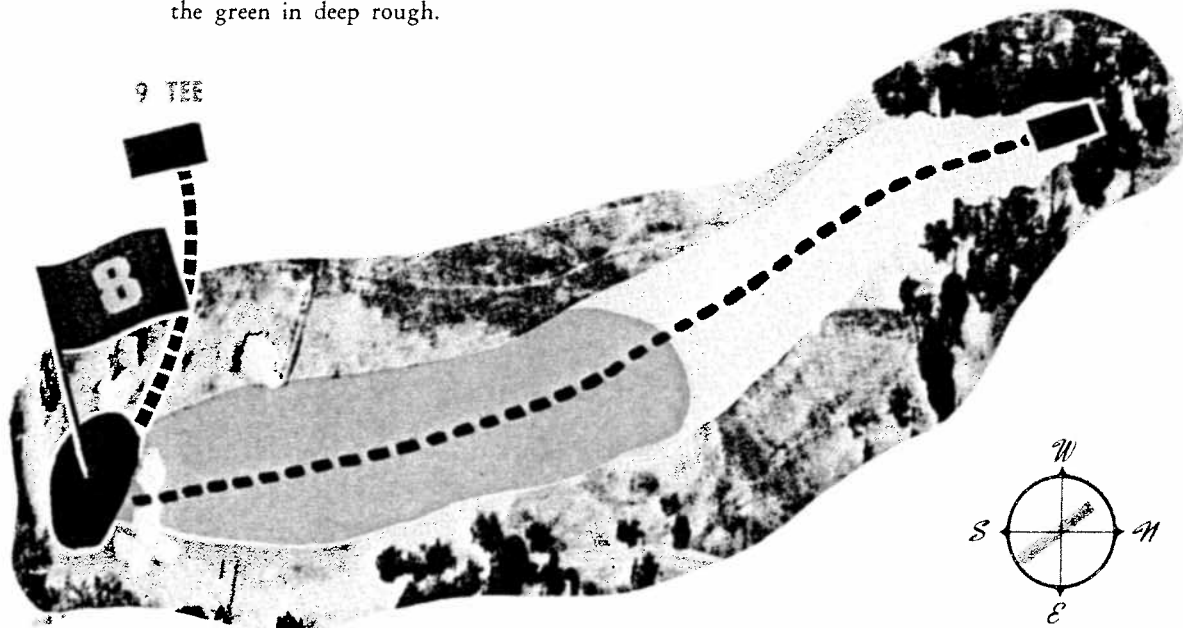
No. 7—442 YARDS—PAR 4

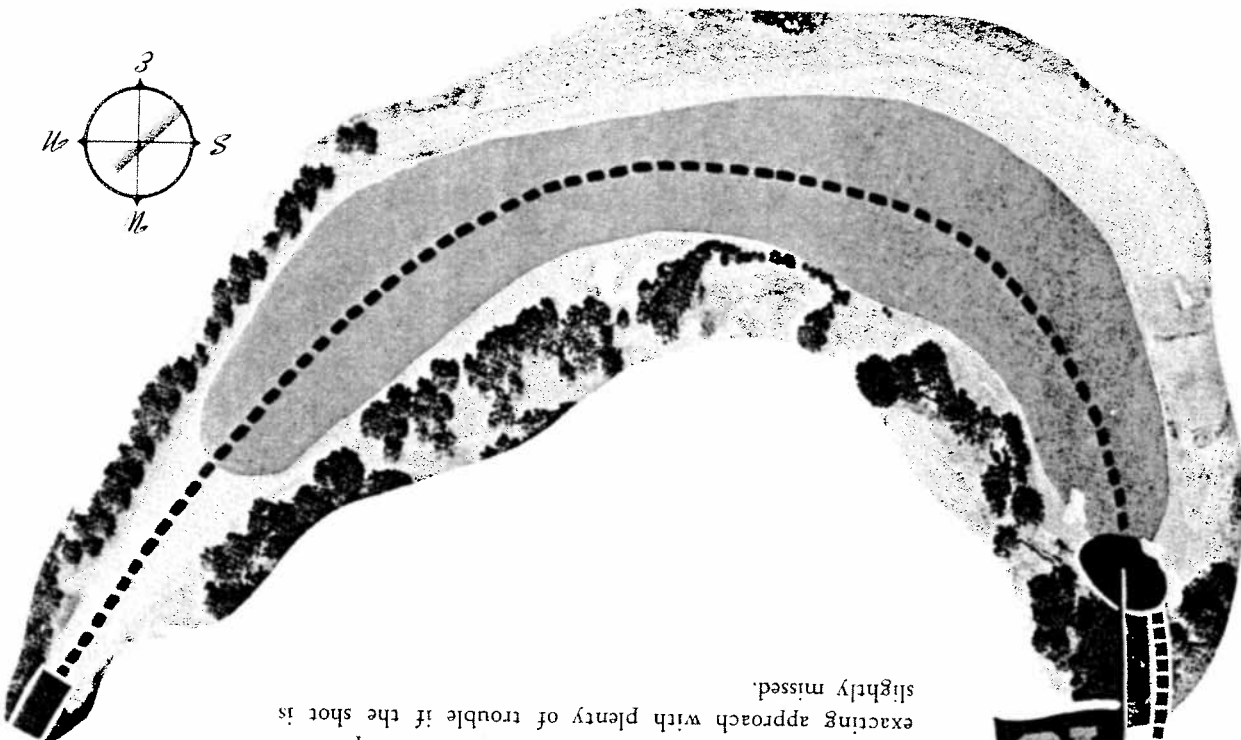
A drive played to the left side of the fairway leaves a direct approach to a green framed by traps on either side. The fairway slopes from the right, and a ball hit to the right off the tee leaves a tougher shot to the green.



No. 8—281 YARDS—PAR 4

This is an easy par that can be tough. A well placed tee shot leaves a simple approach to an undulating green protected in front and to the right by four traps. A shot played to the right or over will leave the ball 25 feet below the green in deep rough.





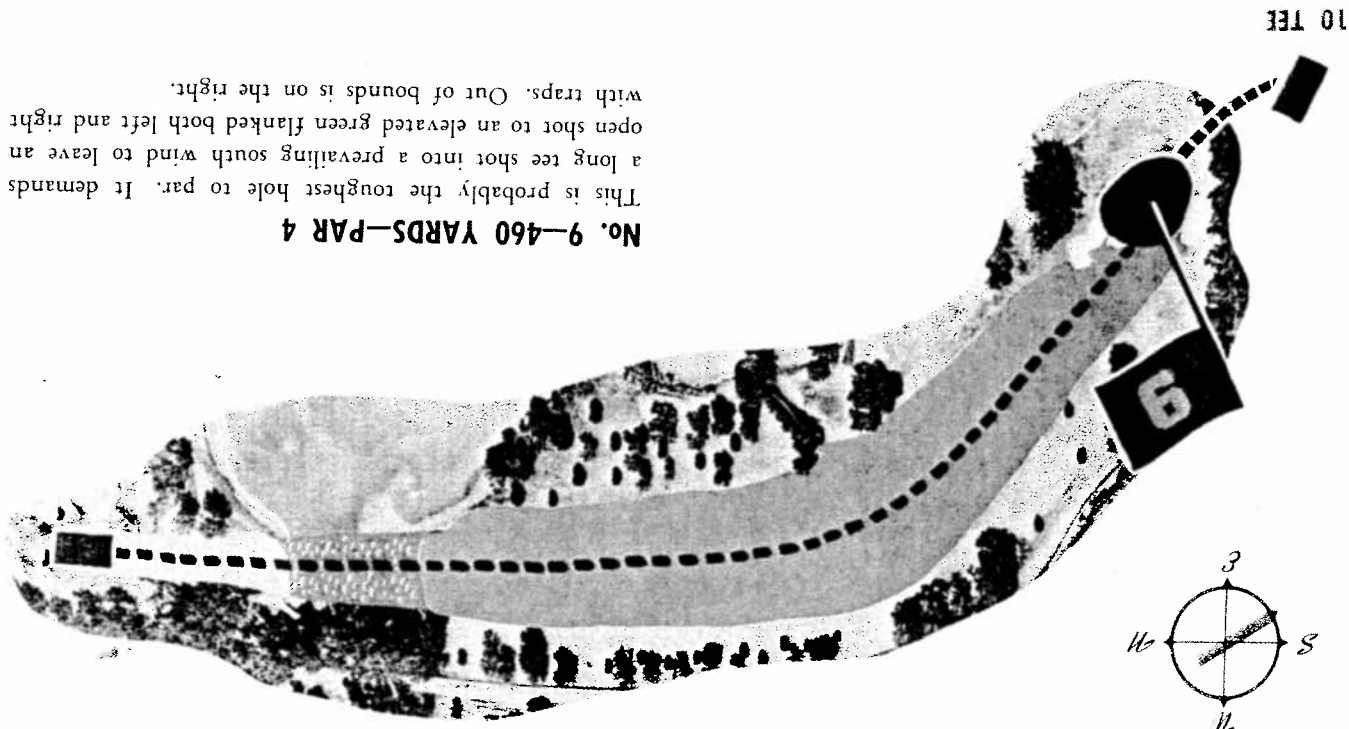
This crescent-shaped hole is a back breaker. A long tee shot will leave a possible second shot to a well guarded green. A creek to the right and back of the green along with a fence boundary close on the left will require an exacting approach with plenty of trouble if the shot is slightly missed.

No. 10-631 YARDS-PAR 5

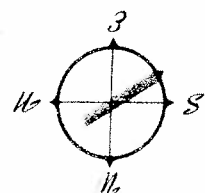
11 TEE

This is probably the toughest hole to par. It demands a long shot into a prevailing south wind to leave an open shot to an elevated green flanked both left and right with traps. Out of bounds is on the right.

No. 9-460 YARDS-PAR 4

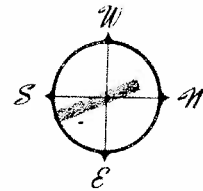
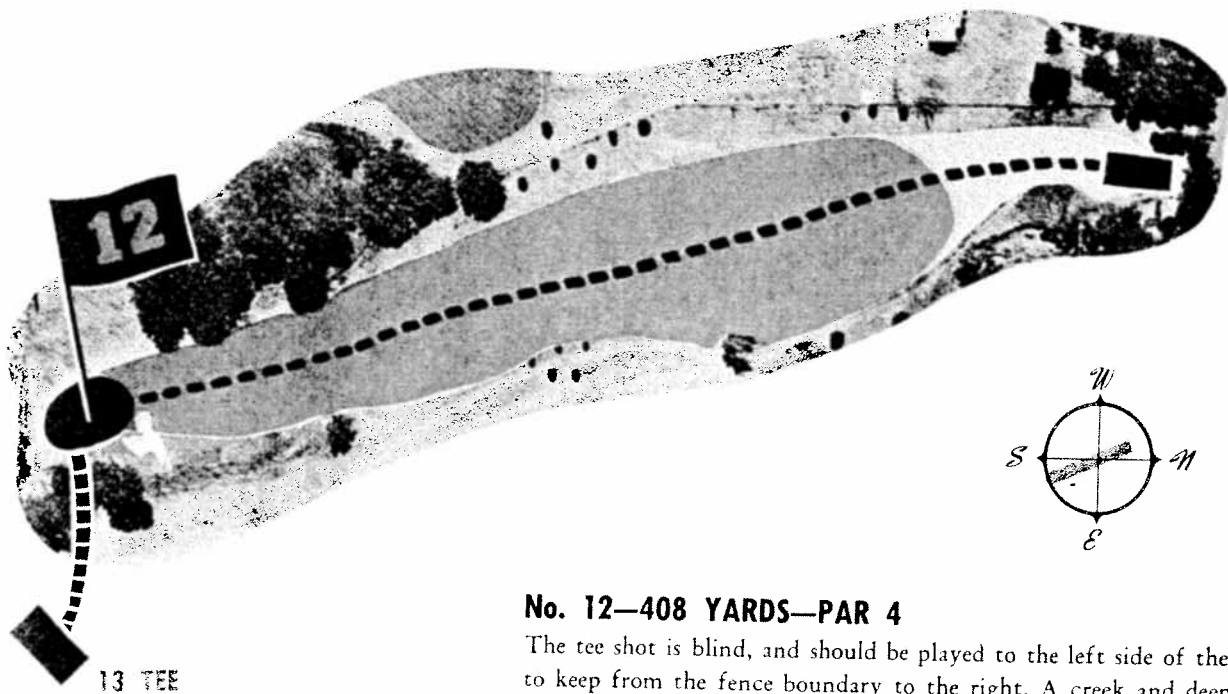
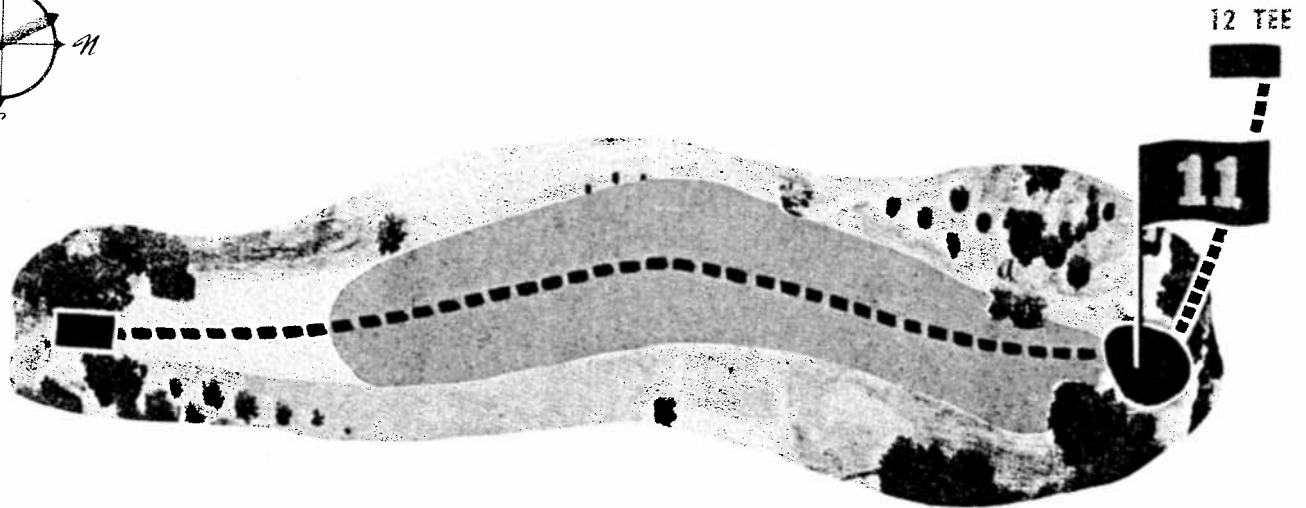
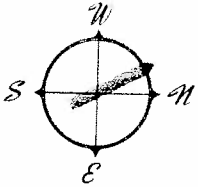


10 TEE



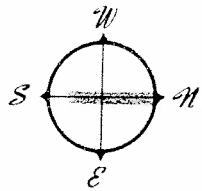
No. 11—418 YARDS—PAR 4

A drive too long will be penalized by coming to rest on a decided down hill lie. The second shot must carry to the green guarded in front by a creek and trapped in front both left and right. The boundary is five yards directly back of the green. The prevailing wind is to the player's back.



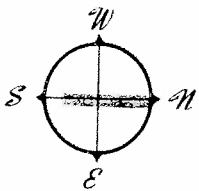
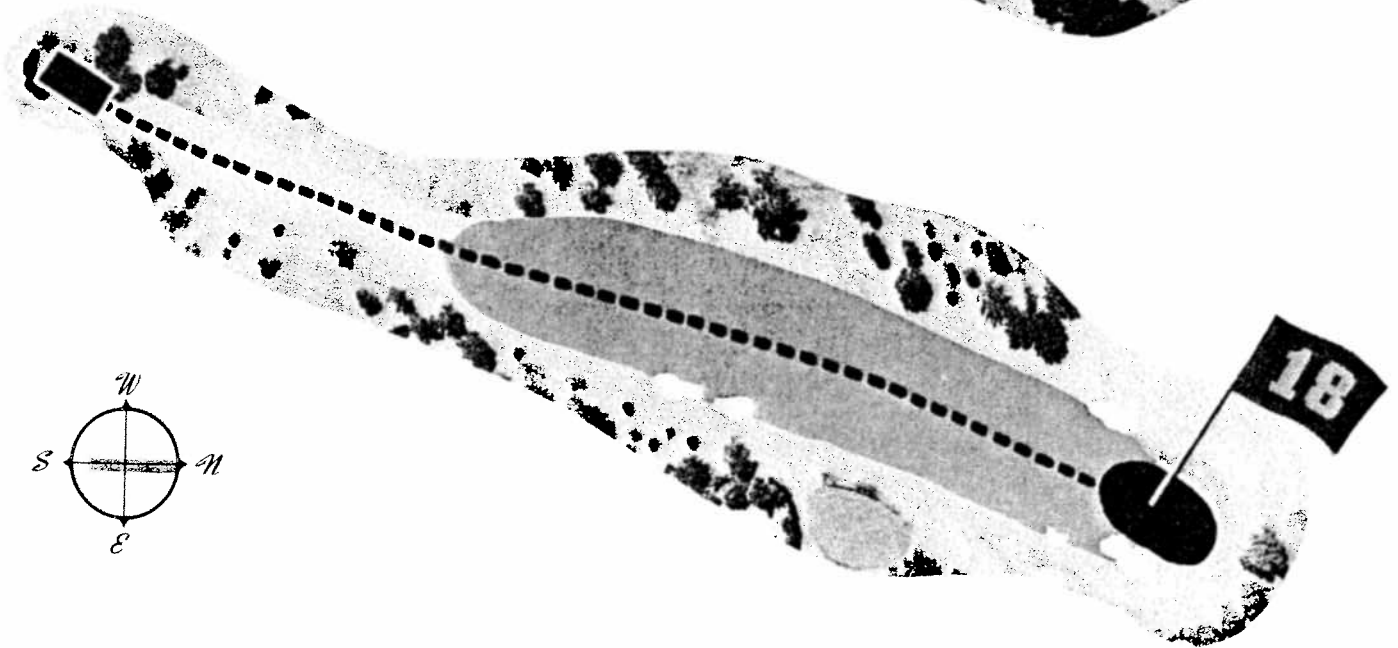
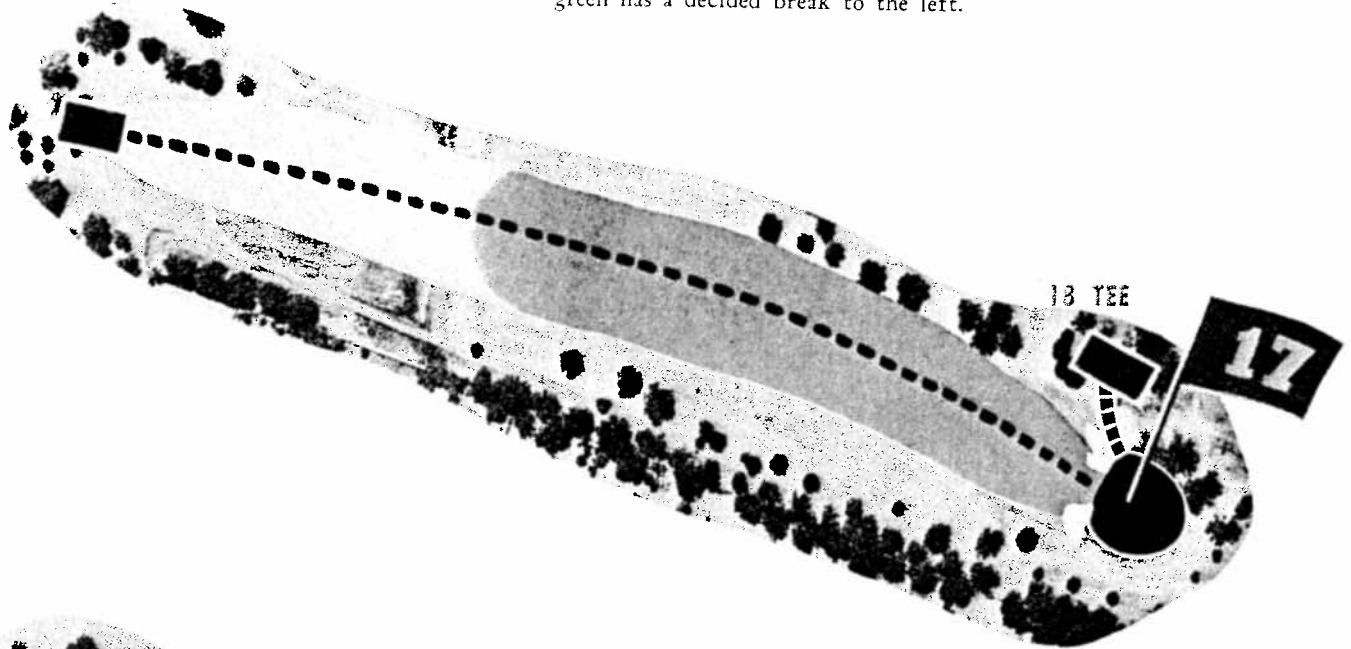
No. 12—408 YARDS—PAR 4

The tee shot is blind, and should be played to the left side of the fairway to keep from the fence boundary to the right. A creek and deep trap to the left along with out of bound beyond protects the green.



No. 17—389 YARDS—PAR 4

This requires a long tee shot to carry a swale, which will leave an open shot to a green protected by traps in front both left and right. The green has a decided break to the left.

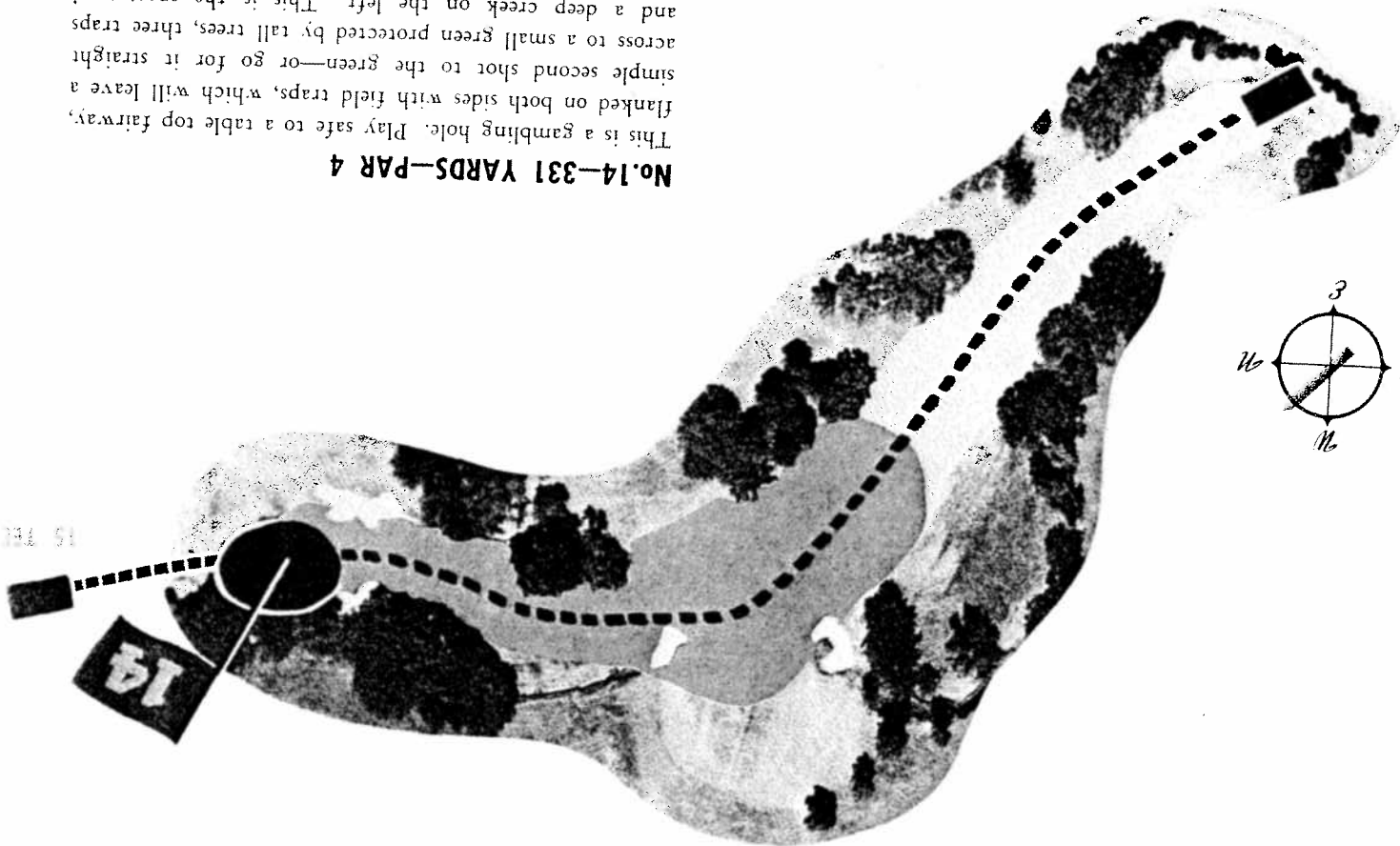


No. 18—441 YARDS—PAR 4

This is a nice finishing hole. The rolling fairway is bordered on the left by a creek, and trees with field traps and boundary to the right. It requires a well placed drive. Three traps protect the large, tricky green.

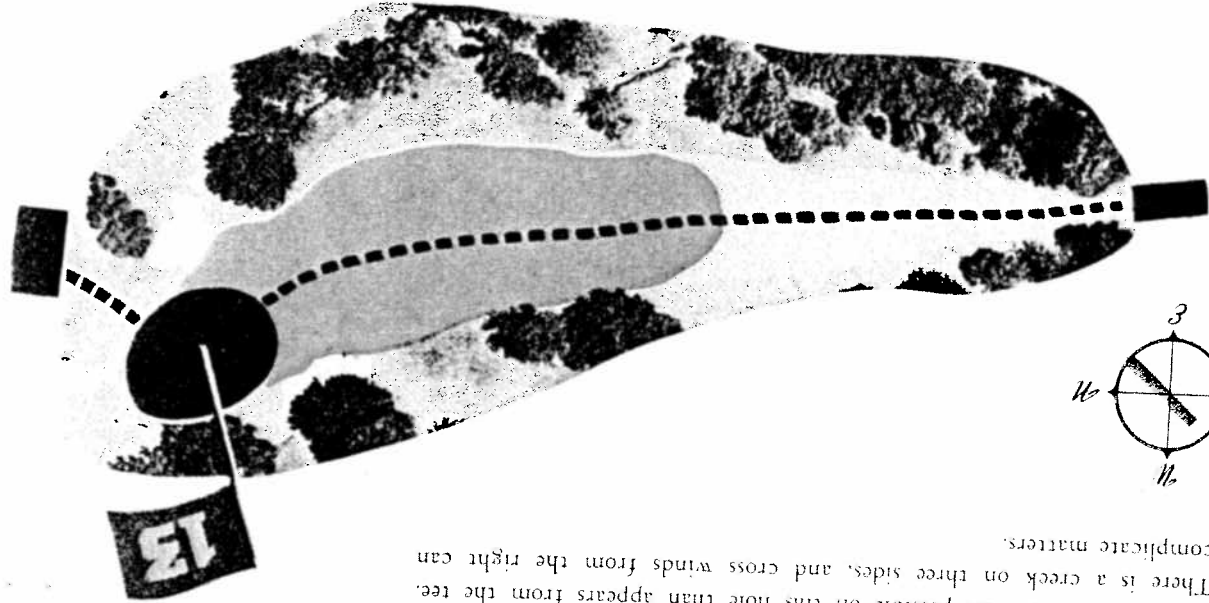
No. 14-331 YARDS-PAR 4

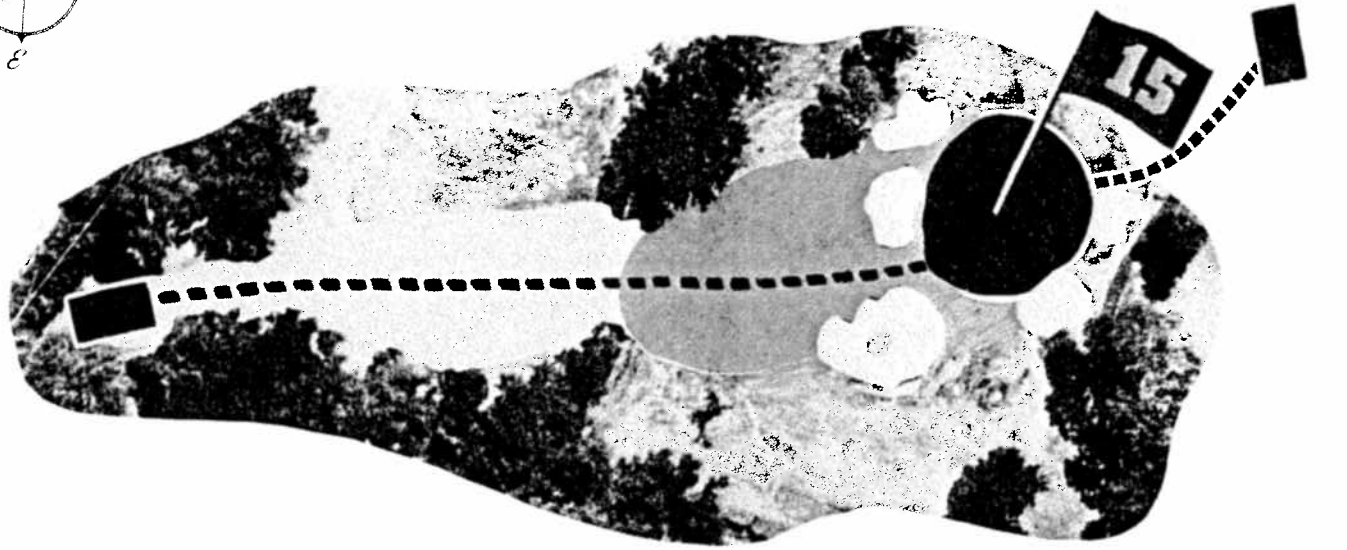
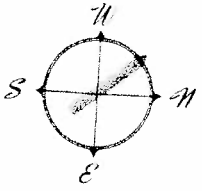
This is a gambling hole. Play safe to a table top fairway, flanked on both sides with field traps, which will leave a simple second shot to the green—or go for it straight across to a small green protected by tall trees, three traps and a deep creek on the left. This is the spectators' favorite gathering point.



No. 13-204 YARDS-PAR 3

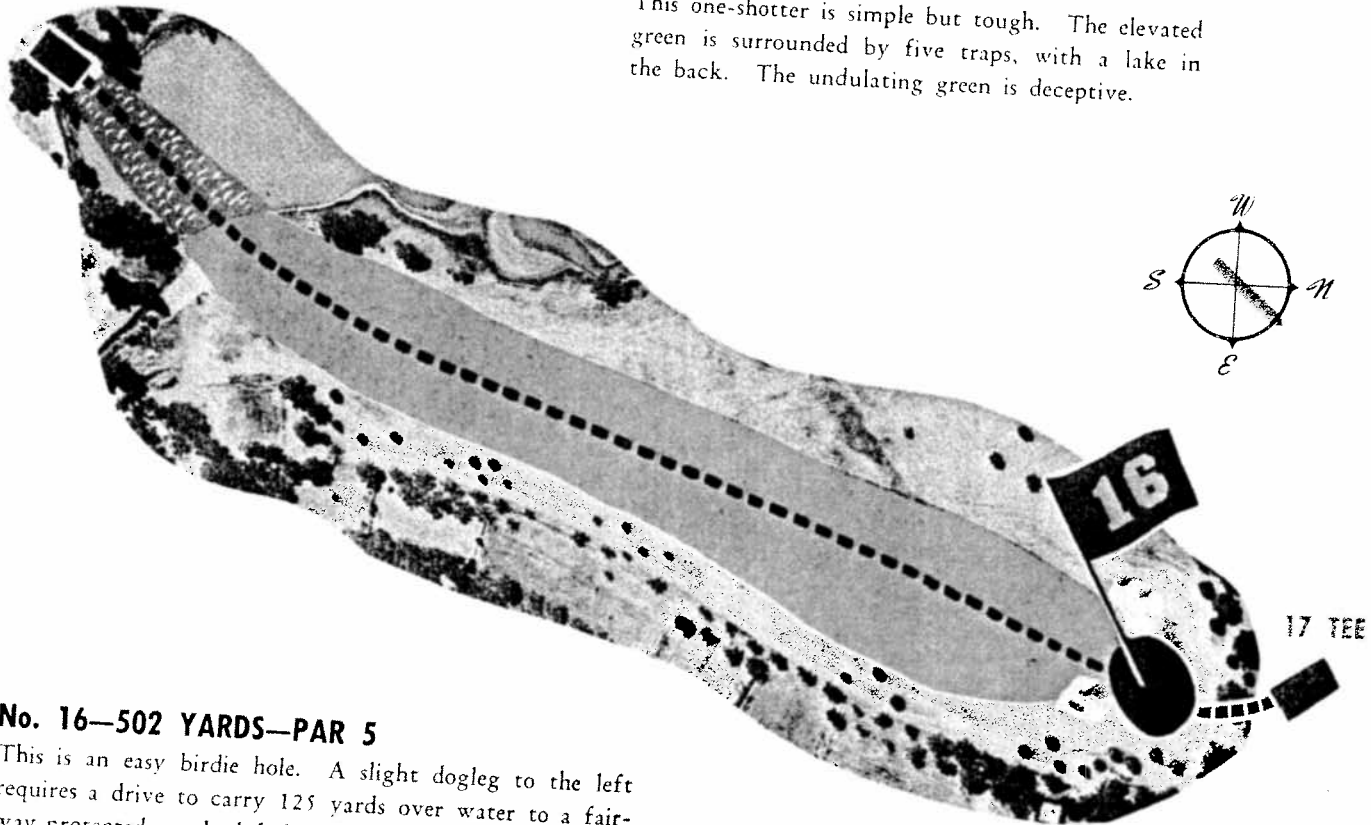
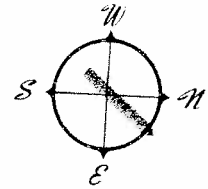
There is more trouble possible on this hole than appears from the tee. There is a creek on three sides, and cross winds from the right can complicate matters.





No. 15—142 YARDS—PAR 3

This one-shotter is simple but tough. The elevated green is surrounded by five traps, with a lake in the back. The undulating green is deceptive.



No. 16—502 YARDS—PAR 5

This is an easy birdie hole. A slight dogleg to the left requires a drive to carry 125 yards over water to a fairway protected on the left by a lake and out of bounds on the right. A long tee shot will leave a fairly easy second shot to a large green flanked on both sides with traps.