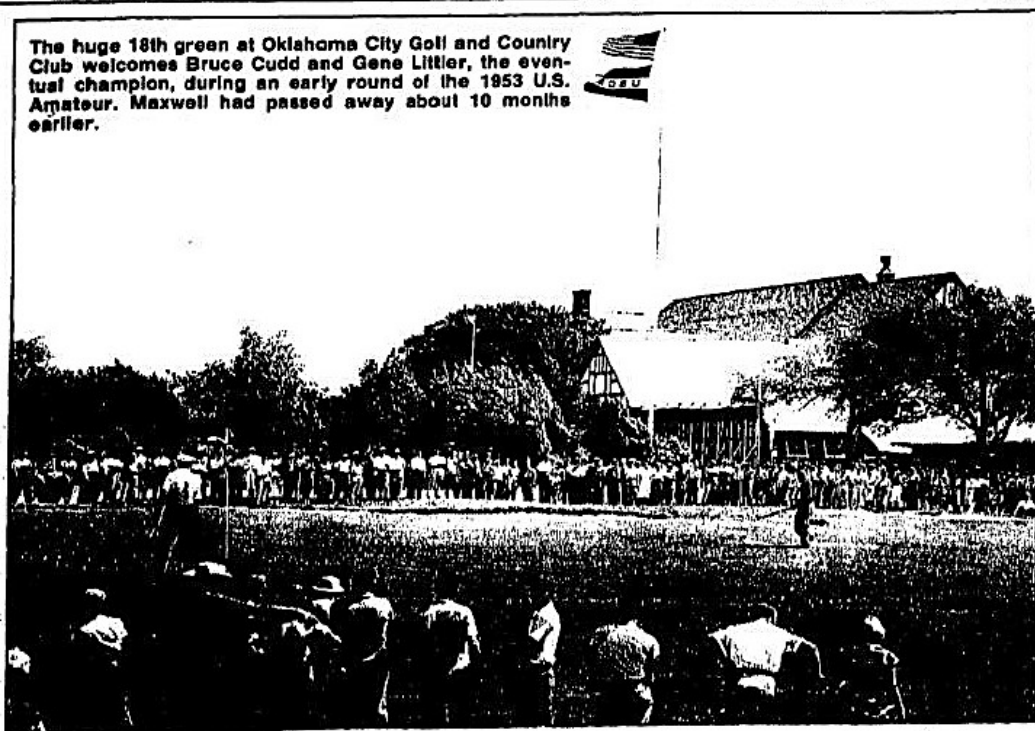


The huge 18th green at Oklahoma City Golf and Country Club welcomes Bruce Cudd and Gene Littler, the eventual champion, during an early round of the 1953 U.S. Amateur. Maxwell had passed away about 10 months earlier.



Courses Designed By Perry Maxwell

Alabama: Lakewood GC (Dogwood), Point Clear, 1947, with Press Maxwell.
Illinois: Rochelle CC, 1930.

Iowa: Veenker Memorial GC, Iowa State University, Ames, 1934.

Kansas: Arkansas City CC (orig. 9), 1937; Prairie Dunes CC, Hutchinson (orig. 9), 1937; Topeka CC (remodeled 9, added 9), 1938.

Kentucky: Kentucky Dam Village GC, 1952, with Press Maxwell.

Louisiana: Bayou de Stard CC, Monroe, 1949, with Press Maxwell; Palmetto CC, Benton, 1950, with Press Maxwell.

Michigan: Crystal Downs CC, Frankfort (remodeled 9, added 9), 1933, with Allister Mackenzie; University of Michigan GC, Ann Arbor, 1931, with Allister Mackenzie.

Missouri: Excelsior Springs CC (par 3); Grandview Muni., Springfield, 1947, with Press Maxwell.

North Carolina: Old Town, Winston-Salem, 1928; Reynolds Park GC, Winston-Salem, 1944; Starmount Forest CC, Greensboro, 1929.

Ohio: Ohio State University GC (Scarlet and Gray courses), Columbus, 1935, with Allister Mackenzie.

Oklahoma: Dornick Hills G&CC (orig. 9 in 1913, added 9 in 1923), Ardmore; Elks CC (orig. 9), Duncan; Hillcrest CC, Bartlesville; Lake Hefner North Course, Oklahoma City, 1951, with Press Maxwell; Lawton CC (orig. 9), 1948, with Press Maxwell; Muskogee CC, 1924; Oakwood CC, Enid, 1947.



Perry Duke Maxwell in 1943

with Press Maxwell; Oklahoma City G&CC, 1930; Ponca City CC; Rolling Hills CC (formerly Indian Hills CC), Tulsa, 1928; Shawnee Elks CC; Southern Hills CC, Tulsa, 1936; Twin Hills G&CC, Oklahoma City, 1928; University of Oklahoma GC, Norman, 1950, with Press Maxwell.

Pennsylvania: Chester Valley CC, Malvern, 1928; Eugene Grace Estate GC, Bethlehem; Melrose CC, Cheltenham, 1927.

Texas: Anderson GC (orig. 9), Killean, 1948, with Press Maxwell; Colonial CC (added holes 3-4-5), Fort Worth, 1940; Knollwood GC, Irving, 1952, with Press Maxwell; Randolph

Field GC (orig. 9), San Antonio, 1948, with Press Maxwell; Riverside GC (formerly The CC of Austin), 1950, with Press Maxwell; Walnut Hills CC, Fort Worth.

Courses Remodeled By Perry Maxwell

Florida: Clearwater CC.

Georgia: Augusta National GC (greens), 1937; Lawrence CC, Macdonald Park Muni. (formerly Wichita CC); Mission Hills CC, Shawnee Mission, Kentucky; Lincoln Homestead State Park GC, 1953, with Press Maxwell.

Nebraska: Omaha CC (greens).

New Jersey: Pine Valley GC (greens), Clementon, 1933.

New York: The Links GC, Roslyn; Maldenstone Club, East Hampton; National Golf Links of America (1 hole), Southampton; Rockaway Huntin Club, Cedarhurst, 1948; Westchester CC (South).

North Carolina: Hillandale CC, Durham, 1930; Hope Valley CC, Durham.

Oklahoma: Lincoln Park GC (East and West), Oklahoma City; Mohawk Park Muni. (Woodbine), Tulsa, 1934; Oaks CC, Tulsa.

Pennsylvania: Flourtown CC, Philadelphia, 1939; Gulph Mills GC, King of Prussia (1937); Marlon GC (East and West), Ardmore, 1939; Philadelphia CC (Spring Mill), Gladwyns, 1938, with William S. Flynn; Saucon Valley CC (Old Course), Bethlehem, 1947; Sunnybrook CC, Philadelphia.